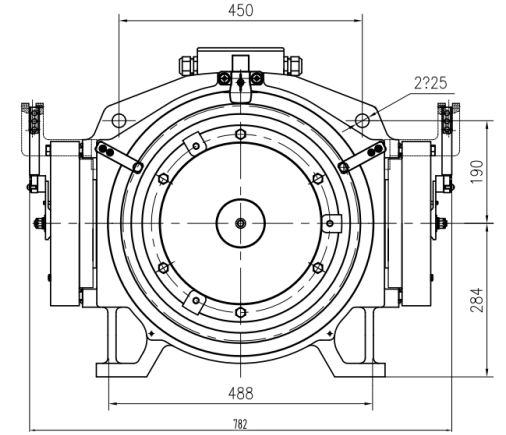
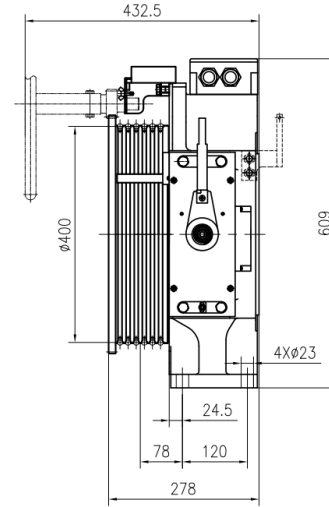
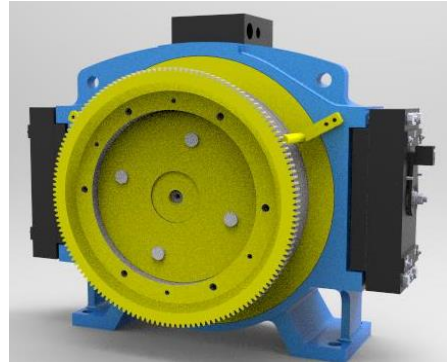


# 产品样册

# GETM3.0Pro Host Example

## 主机图样 Pattern

许用径向载荷 Max. axle load	3000kg
曳引机概算重量 Motor weight	297kg
工作制 Working duty	S5~40%E D
绝缘等级 In.class	155(F)
制动器型号及数量 Brake type	2只DZD2



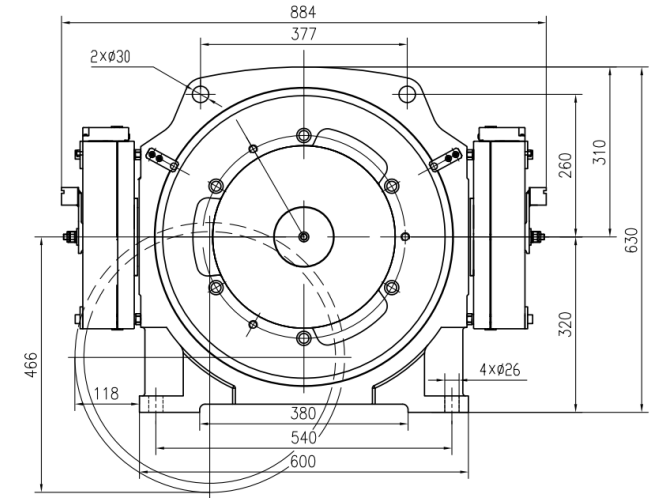
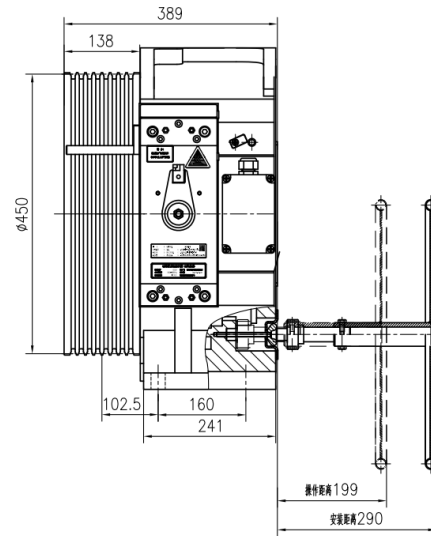
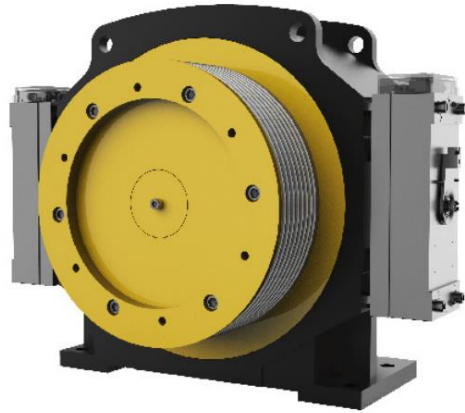
## 规格表: Specification table

机型	曳引比	载重	速度	额定转速	额定转矩	电机Motor					制动器Brake			曳引轮直径	曳引轮规格
						电压	功率	电流	极对数	频率	电流	电压	制动力矩		
Model	Ratio	Loading	Speed	Rated speed	Torque	Voltage	KW	Current	Poles	Hz	Current	Voltage	N.m	Dia. Sheave	Spec. Sheave
GETM3.0Pro	1:1	450	1	48	689	380	3.4	10	15	12	2x1.15	DC110	2x837	400	10*5*15 U/undercut90 degree
GETM3.0Pro	2:1	630	1	109	361		4.1	10		27.25				350	8*5*12 U/undercut90 degree
GETM3.0Pro		630	1.6	174.6	361		7.2	17		43.65					8*5*12 U/undercut90 degree
GETM3.0Pro		800	1	95.5	511		5	12.3		23.88				400	10*5*15 U/undercut90 degree
GETM3.0Pro				1.6			153	8.9		21					38.25
GETM3.0Pro		1000	1	95.5	639		6	14.5		23.88					10*5*15 U/undercut90 degree
GETM3.0Pro				1.6			153	11.2		26.8					38.25
GETM3.0Pro	1050	1	96		6.3		15.4	23.9						10*6*15 U/undercut90 degree	

# GETM5.0H Host Example

## 主机图样 Pattern

许用径向载荷 Max. axle load	5000kg
曳引机概算重量 Motor weight	580kg
工作制 Working duty	S5~40%ED
绝缘等级 In.class	155(F)
制动器型号及数量 Brake type	2只DZD1-653



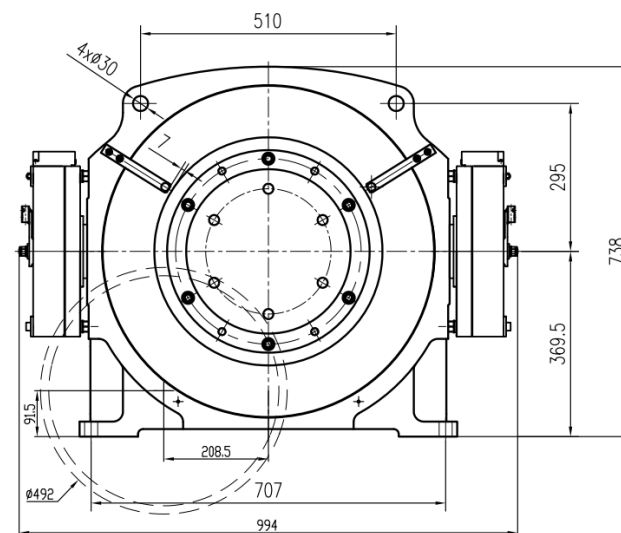
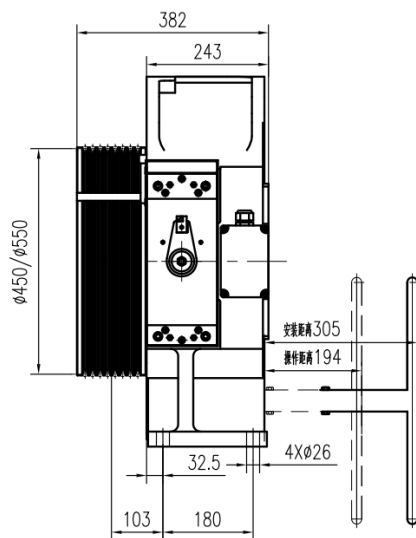
### 规格表: Specification table

机型	曳引比	载重	速度	额定转速	额定转矩	电机Motor					制动器Brake			曳引轮			
						电压	功率	电流	极对数	频率	电流	电压	制动力矩	曳引轮直径	曳引轮规格		
Model	Ratio	Loading	Speed	Rated speed	Torque	Voltage	KW	Current	Poles	Hz	Current	Voltage	N.m	Dia. Sheave	Spec. Sheave >=		
GETM5.0H	1:1	630	1	48	755	340	3.8	11	16	22.7	2x1.15	DC110	2x1270	450	10*6*15 U/undercut95 degree		
GETM5.0H	2:1	1250	1	85	940		8.4	19							36.3	36.3	10*6*15 U/undercut95 degree
GETM5.0H			1.6	136	1015		13.4	30							45.3	10*6*15 U/undercut95 degree	
GETM5.0H		1.6	136	1015	14.5		33	10*7*15 U/undercut95 degree									
GETM5.0H		2	1350	170	1015		17.7	39							10*7*15 U/undercut95 degree		

# GETM6.0H Host Example

## 主机图样 Pattern

许用径向载荷 Max. axle load	6000kg
曳引机概算重量 Motor weight	682kg
工作制 Working duty	S5~40%ED
绝缘等级 In.class	155(F)
制动器型号及数量 Brake type	2只DZD1-653



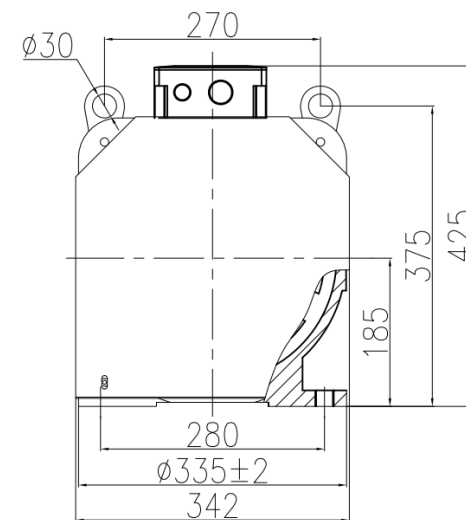
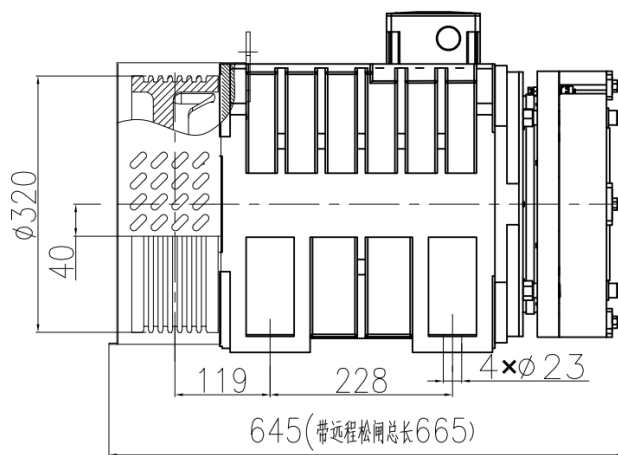
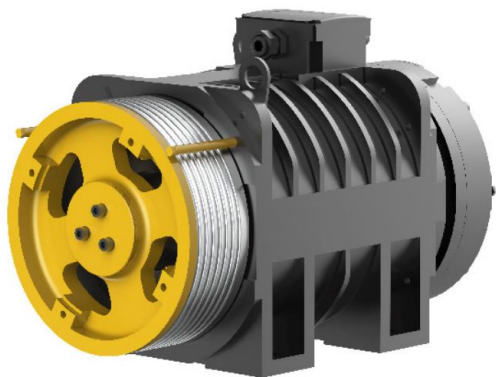
## 规格表: Specification table

机型	曳引比	载重	速度	额定转速	额定转矩	电机Motor					制动器Brake			曳引轮	
						电压	功率	电流	极对数	频率	电流	电压	制动力矩	曳引轮直径	曳引轮规格
Model	Ratio	Loading	Speed	Rated speed	Torque	Voltage	KW	Current	Poles	Hz	Current	Voltage	N.m	Dia. Sheave	Spec. Sheave > =
GETM6.0H	2:1	1600	1.6	136	1176	380	16.7	39	16	36.3	2X1.15	DC 110	2X1470	450	10*8*15 U/undercut96 degree
GETM6.0H			2	170			20.9	44		45.3					10*8*15 U/undercut96 degree
GETM6.0H		2000	1.6	127			1568	20.9		46					33.86

# GETM3.2D Host Example

## 主机图样 Pattern

许用径向载荷 Max. axle load	3200kg
曳引机概算重量 Motor weight	266kg
工作制 Working duty	S5~40%ED
绝缘等级 In.class	155(F)
制动器型号及数量 Brake type	1只ZZD2-480



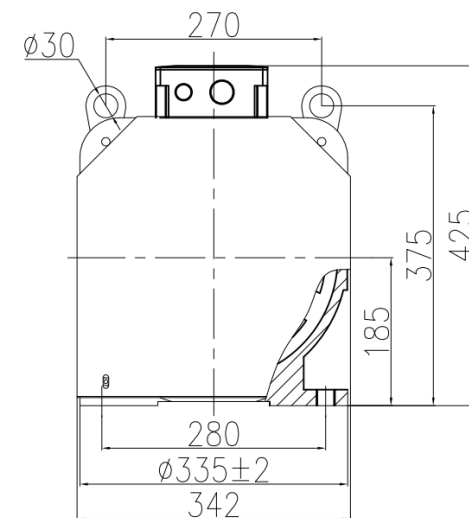
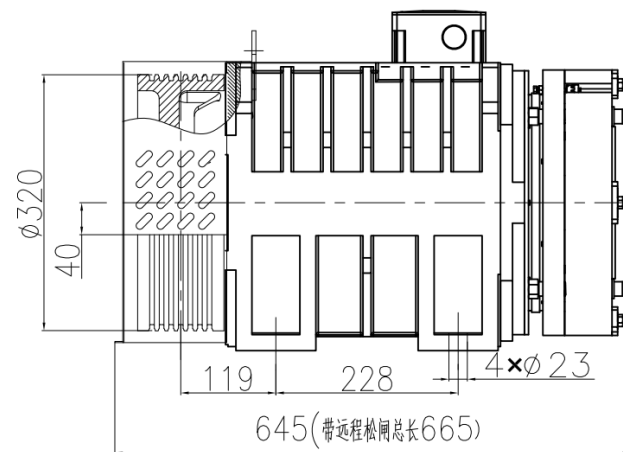
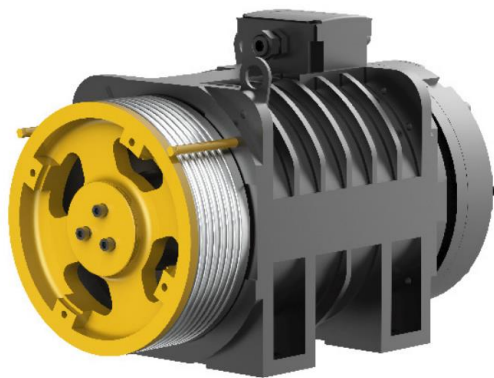
## 规格表: Specification table

机型	曳引比	载重	速度	额定转速	额定转矩	电机Motor					制动器Brake			曳引轮	
						电压	功率	电流	极对数	频率	电流	电压	制动力矩	曳引轮直径	曳引轮规格
Model	Ratio	Loading	Speed	Rated speed	Torque	Voltage	KW	Current	Poles	Hz	Current	Voltage	N.m	Dia. Sheave	Spec. Sheave >=
GETM3.2D	2:1	630	1	119	401	380	4.1	10	10	19.83	1.45	DC 110V	2X420	320	8*5*12 U/undercut90 degree
GETM3.2D			1.6	191	426					31.83					8*5*12 U/undercut90 degree

# GETM3.2D Host Example

## 主机图样 Pattern

许用径向载荷 Max. axle load	3200kg
曳引机概算重量 Motor weight	266kg
工作制 Working duty	S5~40%ED
绝缘等级 In.class	155(F)
制动器型号及数量 Brake type	1只ZZD2-480



## 规格表: Specification table

机型	曳引比	载重	速度	额定转速	额定转矩	电机Motor					制动器Brake			曳引轮	
						电压	功率	电流	极对数	频率	电流	电压	制动力矩	曳引轮直径	曳引轮规格
Model	Ratio	Loading	Speed	Rated speed	Torque	Voltage	KW	Current	Poles	Hz	Current	Voltage	N.m	Dia. Sheave	Spec. Sheave >=
GETM3.2D	2:1	800	1	119	401	380	5	12.3	10	19.83	1.41	DC110	2X702	320	8*6*12 U/undercut90 degree
GETM3.2D			1.6	191	426		9.3	21.9		31.83					8*6*12 U/undercut90 degree
GETM3.2D		1000	1	119	533	380	6	15.1	10	19.83	1.41	DC110	2X702	320	8*7*12 U/undercut90 degree
GETM3.2D			1.6	191	534		11.7	28		31.83					8*7*12 U/undercut90 degree