

Features 产品特性

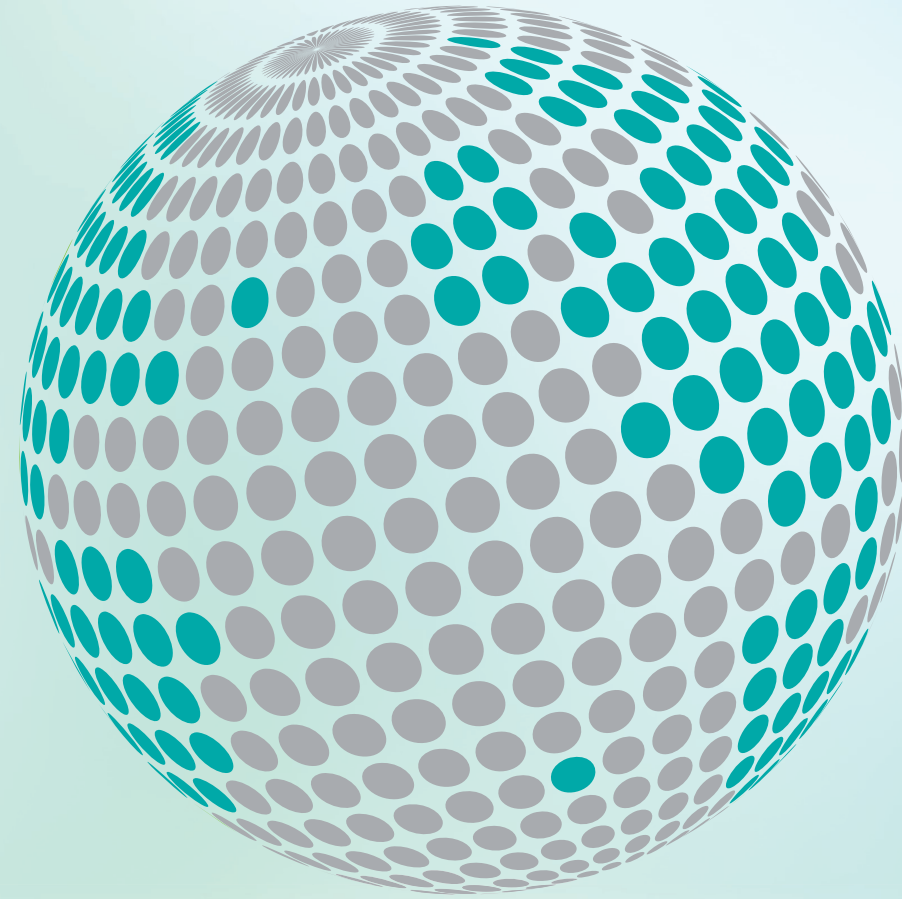
Special housing design provides stable and high structural rigidity. Design is verified FEM and physical mechanical test.	特殊的机座结构设计，曳引轮悬臂更短，结构刚度高，可靠稳定。设计方案经过有限元分析，具有高安全系数。
Designed by inner rotor. Possible to generate bigger torque with low noise and vibration. Provides comfortable ride.	电机采用内转子结构；噪音低，振动小，运行平稳舒适
Solid construction for permissible shaft load Fs at the traction sheave up to 30kN	结构紧凑，性能稳定，最大轴载荷 30kN
Disk electro-magnetical brake provides min. braking torque 2x900Nm	盘式电磁制动器，提供 2x880Nm 的制动力矩
CTE test approved according to GB7588 and TSG T7007	型式试验满足 GB7588 要求，按 TSG T7007 标准测试
Groove profiles according to lift system	根据电梯曳引系统设计绳槽
Perfect rated motor, use of high - performance permanent magnet, degree of protection IP40, insulation class 155 C (F), temperature control	使用高效永磁，防护等级 IP40，绝缘等级 155 C (F)，带温度报警
Motor with 2 times overload capacity ; max. travelling height up to 80m	两倍过载能力；推荐提升高度80m
CE type-examination certificate according to EN 81-20/50, can be used for UCM solution	满足 EN81-20/50 的 CE 证书，可以用作防轿厢意外移动(UCM)的解决方案
Inverter compatible measuring device, rigid coupling or intergrated. (e.g. ECN 1313; ERN 1387; TS5213N2503; EI53C9.25-2048-SA5N2T)	适用于变频器控制，带编码器测量，如ECN 1313; ERN 1387; TS5213N2503; EI53C9.25-2048-SA5N2T
Cost - and energy-efficient	经济节能
The braker passed 2 million times braking. After the test, its performance is still in specification. Safety is guaranteed.	制动器经历 200 万次以上的动作测试，安全可靠

Content of supply 供货内容

- * Gearless synchronous inner rotor drive with:
 - Traction sheave
 - Braking system
 - Measuring and feedback system (encoder)
 - * Manual release device for brake (option)
 - * Remotely controlled bowden cable for brake (option)
 - * Connection cable for encoder (option)
 - * All technical documents necessary for approval and detail operation manual
- * 永磁同步内转子电机，包括：
 - 曳引轮
 - 制动器
 - 测量反馈系统(编码器)
 - * 手动松闸装置(选项)
 - * 远程松闸装置(选项)
 - * 编码器连接线(选项)
 - * 所有的必要的技术文件以及详细的操作手册



提供电梯部件、模块和系统的全球合作伙伴



safety in motion™

www.wittur.com

SELECOM
a WITTUR brand

Liftmaterial
a WITTUR brand

sematic
a WITTUR brand



登录威特集团网站
获取更多信息

威特电梯部件(苏州)有限公司 地址：中国江苏省吴江汾湖经济开发区凤凰路18号,215214 电话：+86-512-62072888 传真：+86-512-63220044 电邮：info@wittur.com DWS6-MFC1.20-11-V1

safety in motion™

www.wittur.com

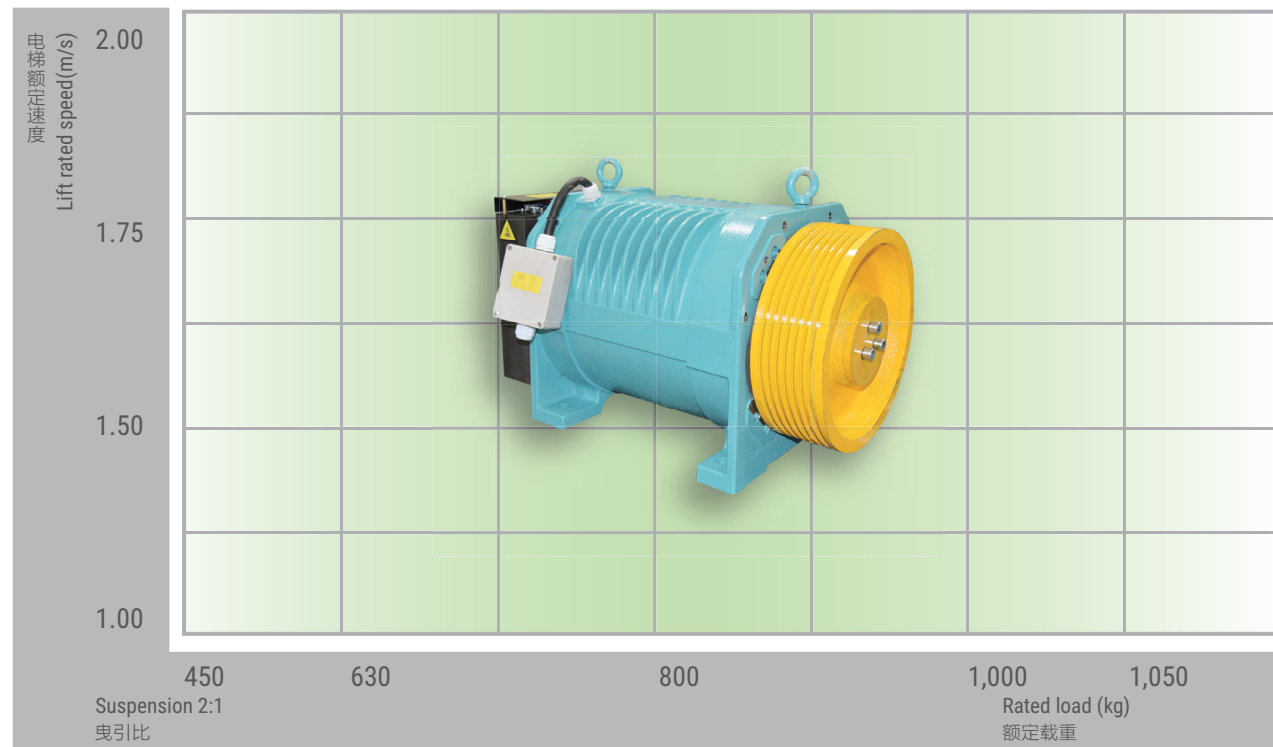


WSG-MFC.1

GEARLESS SYNCHRONOUS TRACTION MACHINE
无齿轮同步曳引机



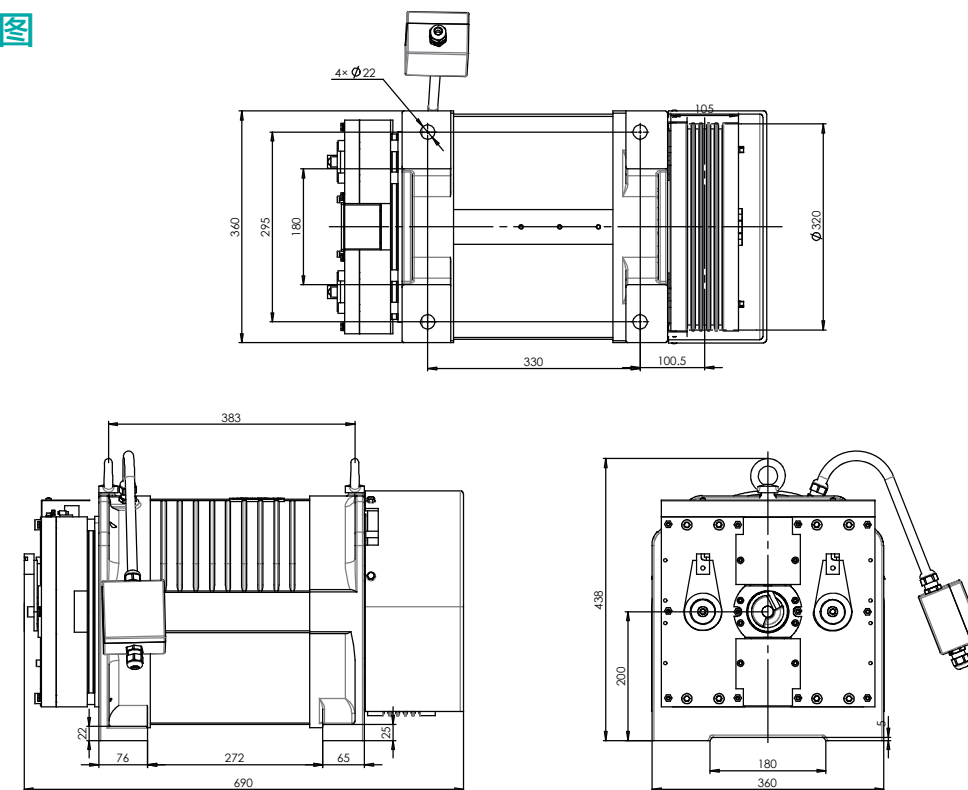
Product range WSG-MFC.1 series WSG-MFC.1 系列产品覆盖范围



WSG-MFC.1 SERIES					
Rated loads up to (kg) 最大额定载重	450	630	800	1000	1050
Rated torque(N.m) 额定转矩	240	335	430	535	560
Inertia J_0 [kgm ²] 惯性力矩	0.68	0.68	0.69	0.74	0.74
Traction sheave Ø (mm) 曳引轮直径	320				
Rated speed (m/s) 额定速度	1.0 ... 2.0				
Shaft load (kN) 轴负荷	30kN				
CTE test CTE型式试验	Y				
Motor Type 电机类型	Gearless PM synchronous 无齿轮永磁同步				
* Net weight (kg) 净重	260	260	270	280	280
MRL solution 无机房方案	Applied 适用				
Installation 安装方式	ONLY vertical installation in machine room or top of the shaft 仅在井道顶部或机房垂直安装				

*The mechanical evacuation system isn't included, when we measure its weight and thickness.
计算重量和厚度尺寸时, 未包括盘车齿轮等应急疏散设备。

Fixing dimension 安装尺寸图



Technical data for Brake 制动器技术参数

Motor Type 电机型号	Brake Type 制动器型号	Certificate Type 证书类型	Pull in Voltage 吸合电压 (V)	Holding Voltage 保持电压 (V)	Rate Current 额定电流 (A)	Brake Torque 制动力矩 (Nm)
WSG-MFC.1	VED40	CTE/CE	DC 110	DC 110	2×1.5	≥2×880

Technical data for traction machine 曳引机技术参数

Motor Type 电机型号	Synchronous/同步 24-pole/24极					
	WSG-MFC.1 (450 kg)					
Rated Torque/额定转矩 S3-40%, 2400r/h	Mn (N.m) 240					
Sheave 曳引轮	ØDt (mm) 320					
Loads 额定载重	Q (kg) 450					
Suspension 曳引比	2:1					
Groove profile (N x ØD-P) 曳引轮绳槽	5xØ8-12/6xØ8-12/7xØ8-12; γ=30°/35°; β=90° or see order form 或参见订单					
Motor current applicable to 380V link voltage 适用于变频器 母线电压 380V	V (m/s)	n_n [rpm]	P_n [kW]	I_n [A]	U_n [V]	F_n [Hz]
	1.0	119	3	7.1	380	23.8
	1.5	179	4.5	10.7	380	35.8
	1.75	209	5.3	12.7	380	41.8
2.0	239	6	14.4	380	47.8	

Motor Type 电机型号	Synchronous/同步 24-pole/24极					
	WSG-MFC.1 (630 kg)					
Rated Torque/额定转矩 S3-40%, 2400r/h	Mn (N.m) 335					
Sheave 曳引轮	ØDt (mm) 320					
Loads 额定载重	Q (kg) 630					
Suspension 曳引比	2:1					
Groove profile (N x ØD-P) 曳引轮绳槽	5xØ8-12/6xØ8-12/7xØ8-12; γ=30°/35°; β=90° or see order form 或参见订单					
Motor current applicable to 380V link voltage 适用于变频器 母线电压 380V	V (m/s)	n_n [rpm]	P_n [kW]	I_n [A]	U_n [V]	F_n [Hz]
	1.0	119	4.2	9.9	380	23.8
	1.5	179	6.3	15.1	380	35.8
	1.75	209	7.3	17.7	380	41.8
2.0	239	8.4	20.2	380	47.8	

Motor Type 电机型号	Synchronous/同步 24-pole/24极					
	WSG-MFC.1 (800 kg)					
Rated Torque/额定转矩 S3-40%, 2400r/h	Mn (N.m) 430					
Sheave 曳引轮	ØDt (mm) 320					
Loads 额定载重	Q (kg) 800					
Suspension 曳引比	2:1					
Groove profile (N x ØD-P) 曳引轮绳槽	5xØ8-12/6xØ8-12/7xØ8-12; γ=30°/35°; β=90° or see order form 或参见订单					
Motor current applicable to 380V link voltage 适用于变频器 母线电压 380V	V (m/s)	n_n [rpm]	P_n [kW]	I_n [A]	U_n [V]	F_n [Hz]
	1.0	119	5.4	12.8	380	23.8
	1.5	179	8.1	20.1	380	35.8
	1.75	209	9.4	22.8	380	41.8
2.0	239	10.8	24.8	380	47.8	

Motor Type 电机型号	Synchronous/同步 24-pole/24极					
	WSG-MFC.1 (1000 kg)					
Rated Torque/额定转矩 S3-40%, 2400r/h	Mn (N.m) 535					
Sheave 曳引轮	ØDt (mm) 320					
Loads 额定载重	Q (kg) 1000					
Suspension 曳引比	2:1					
Groove profile (N x ØD-P) 曳引轮绳槽	5xØ8-12/6xØ8-12/7xØ8-12; γ=30°/35°; β=90° or see order form 或参见订单					
Motor current applicable to 380V link voltage 适用于变频器 母线电压 380V	V (m/s)	n_n [rpm]	P_n [kW]	I_n [A]	U_n [V]	F_n [Hz]
	1.0	119	6.7	15.4	380	23.8
	1.5	179	10.0	23.0	380	35.8
	1.75	209	11.7	26.9	380	41.8
2.0	239	13.4	29.6	380	47.8	

Motor Type 电机型号	Synchronous/同步 24-pole/24极					
	WSG-MFC.1 (1050 kg)					
Rated Torque/额定转矩 S3-40%, 2400r/h	Mn (N.m) 560					
Sheave 曳引轮	ØDt (mm) 320					
Loads 额定载重	Q (kg) 1050					
Suspension 曳引比	2:1					
Groove profile (N x ØD-P) 曳引轮绳槽	5xØ8-12/6xØ8-12/7xØ8-12; γ=30°/35°; β=90° or see order form 或参见订单					
Motor current applicable to 380V link voltage 适用于变频器 母线电压 380V	V (m/s)	n_n [rpm]	P_n [kW]	I_n [A]	U_n [V]	F_n [Hz]
	1.0	119	7.0	16.1	380	23.8
	1.5	179	10.5	24.0	380	35.8
	1.75	209	12.3	28.1	380	41.8
2.0	239	14.0	31.0	380	47.8	