

2023.03

本书为一般信息出版物，我们保留随时更改产品技术和说明的权利。

本书中的任何字句，无论其字面意思或含义，对任何产品的用途和质量，或者任何购销合同条款的表述与更改均不承担责任。  
(产品外观仅供参考，具体以实物为准)

This book is a publication of general information, and we reserve the right to alter the techniques and specifications of the products at any moment. Regardless of the literary meanings or implications, no liabilities shall be undertaken for any words and sentences about applications and qualities of any products in this brochure or for definitions and alterations of any articles and clauses in the purchase and sales agreements.  
(Appearances of products presented in this book are for reference only and appearance of actual products may vary)

浙江西子富沃德电机有限公司

ZHEJIANG XIZI FORVORDA ELECTRICAL MACHINERY CO., LTD

地址：浙江省杭州市临安区青山湖街道鹤亭街181号；

ADD: No. 181, Heting Street, Qingshan Lake Subdistrict, Lin'an District, Hangzhou City, Zhejiang Province, China

主机系统

Traction Machine

**FWD** 富沃德



# POWER

## 使命：

为人类节约能源贡献中国力量

## 愿景：

全球知名的节能电机专家

## 价值观：

合作 开放 责任 创新 精益

## 经营理念：

合作重于竞争

P01 公司简介  
Company Profile

P10 色卡  
Color Code

P11 常规客梯主机系列  
For General Elevators  
GETM3.0 Pro  
GETM3.0H  
GETM3.5H  
GETM6.0H  
GETM8.0H

P23 超薄主机系列  
Flat Machine  
GETM3.0G  
GETM3.5G

P29 条形机系列  
Bar-Shaped Machine  
GETM2.5DS  
GETM3.2DS  
GETM5.0D-S  
GETM6.3D

P39 钢带主机系列  
Belt Machine  
GETM2.6T  
GETM4.1T

P45 家用梯 / 小载重主机系列  
For Home Lifts & Small Lifts  
GETM1.5T  
GETM1.9D

P51 高速梯主机系列  
For High-Speed Elevators  
GETM12C  
GETM15C  
GETM40C  
GETM70C

P61 无齿轮货梯主机系列  
Gearless for cargo lifts  
GEMT3.0H  
GEMT5.0H  
GEMT6.0H  
GEMT8.0H

P71 F53正弦编码器

西子富沃德  
Xizi Forvorda



## 浙江西子富沃德电机有限公司

浙江西子富沃德电机有限公司注册成立于 2004 年 5 月份，并于 2005 年 2 月份移师临安经济开发区，是西子国际控股集团旗下重要的高科技研发制造基地。

公司成立之初即顺利通过了 ISO9001:2000 质量体系认证，各系列产品以其无可挑剔的品质顺利通过了 A3 认证，KC 认证，CSA 认证。WCA 认证和 VDA6.3 认证。

公司现有各类加工设备 300 多台（套），其中包括机械手在内各类进口高端加工设备 30 多台（套）。主机生产流水线年产能可达 28 万台（一班制），是国内最大的永磁同步无齿轮曳引机制造基地。

公司发展至今，产品覆盖常规客梯主机、无机房主机、家用梯 / 小载重主机、高速梯主机、扶梯主机、货梯主机等几大系列。主机载重范围为 400kg-5000kg，拥有 0.3m/s-10m/s 的大范围额定速度，产品广泛适用于高层住宅楼、别墅、办公楼、宾馆、机关、学校和其他公共建筑场所。公司同时拥有安全钳、限速器等安全部件的自主研发和生产能力。

## Zhejiang Xizi Forvorda Electrical Machinery Co., Ltd.

Zhejiang Xizi Forvorda Electrical Machinery Co., Ltd. was incorporated in May 2004 and re-located to Lin'an Economy Development Area in Feb. 2005, which is a core member of XIC as the high-tech R&D Center and manufacturing base.

Xizi Forvorda has acquired the ISO9001:2000 Quality System Certificate as early as it was just established; its products has obtained various certification such as EN 81-1:1998+A3:2009, KC and CSA.

Xizi Forvorda is equipped with more than 300 sets of various equipment, more than 30 sets among which are imported high-end machining equipment such as manipulators. Its streamlined production line can churn out more than 280,000 sets (one shift) of traction machine annually, which makes Forvorda the largest manufacturer in China for PM gearless traction machine.

Through all its way until today, Xizi Forvorda has developed traction machines for General Passenger Elevator, MRL Elevator, Home Lift/Small Lift, High-Speed Elevator, and Freight Elevator. The rated load of its traction machine ranges from 400kgs~5000kgs, and rated speed from 0.3m/s~10m/s. Its products are widely used in high-rise residential buildings, villa, office buildings, hotels, schools and other public buildings. We also possess the ability to develop and produce safety parts like safety gear and speed governor etc.



公司拥有磁钢、制动器、定子铁芯、铸造生产线和多条主机装配线，通过对各产品线的划分、工序调整以及工装改进，提高了作业员及设备工装的工作效率，减少了单件产品的工时消耗，降低了成本。实现了生产线工艺的平衡，使我司成为国内最大的永磁同步无齿轮曳引机供应商。

Xizi Forvorda has set up magnet production line, brake production line, stator core, casting production line and three assembly lines for traction machine. By setting up separate production line, re-arranging working process and improving tools, working efficiency is improved considerably, time-consumption for unit products has been reduced and so has the cost. The realization of balanced production line makes Xizi Forvorda the largest PM gearless traction machine supplier in China.



Professional components supplier

### 博长取优，领先未来

科技创新是推动企业发展的核心力量。浙江西子富沃德电机有限公司非常重视技术的提升，先后与上海交通大学、清华大学、中国计量学院等重点科研机构合作，形成优势互补，设立了博士后工作站和院士工作站。目前公司共申请知识产权 223 项，已授权有效的发明专利 36 项、实用新型专利 135 项、外观专利 46 项，软著 6 项。并先后获得 ISO9001 质量体系认证、ISO10012-1 计量体系认证，同时，还被国家发改委、财政部指定为高效电机推广企业，推广量占全国高效永磁电机的 22.6%，成就了公司在行业内的国际领先地位。

### Draw Strength from Others, Lead the Trends in Future

Scientific and technological innovation is the core power that drives forward the development of an enterprise. Zhejiang Xizi Forvorda Electrical Machinery Co., Ltd places high emphasis on the technological improvement and has cooperated with Shanghai Jiaotong University, Tsinghua University, China Jiliang University, and many other key scientific and technological research institutes in order to make respective advantages complementary to each other. And it also has set up Post-Doctoral Station and Academician Station. Up till now, we have won 128 patents (23 inventions, 71 utility models, 28 industrial design, 6 software copyright). And we have achieved ISO9001 Quality System certification and ISO10012-1 Measurement System Certification. Besides we have been appointed by National Development and Reform Commission and the Ministry of Finance as the company to promote the High-Efficient Motor, the High-Efficient PM Motor sold by XIZI Forvorda accounts for 22.6% shares of the total sales in China. All these have established our company as a leading role in the industry in the world.

### 无齿轮主机研发，开创电梯新时代

1999 年—2001 年，公司和高校经过长期合作和密切的交流，技术逐渐成熟，共同研发出具有自主知识产权的无齿轮曳引机，直至目前，该项技术研发仍引领着电梯行业的未来发展趋势。使用该技术的主机无需励磁，启动电流极小，传动效率极高，结构更合理。与传统曳引机相比，效率更高，噪音更低，节能环保，节能效果高达 30% 以上，显著地降低了成本。尤其是去掉了传动机构后，主机结构轻盈小巧更紧凑，可直接安装在井道内，最大程度节省建筑面积与费用。

### The Launch of Gearless Traction Machine, Brings a New Era of Elevators

From 1999 to 2001 through long-term cooperation and frequent exchanges, the company and University gradually achieved mature technology and worked together to develop a gearless traction machine having proprietary intellectual property rights. Up till now, the research and development of this technology is still representing the trend of future development of the elevator industry. Machines using this technology do not need excitation and have small starting currents but extremely high transmission efficiency and more reasonable structures. Compared with traditional traction machines, they have higher efficiency, lower noise, and better environmental and energy-saving performance. They significantly reduce the cost by saving up to more than 30% of energy. Particularly, after the transmission mechanism is removed, the structure of the machine is lighter, smaller, and more compact. It can be directly installed in the shaft to minimize the building area and cost.





## 杭州西子富沃德精密机械有限公司

杭州西子富沃德精密机械有限公司位于浙江省临安市经济开发区於潜产业区逸逸村地块，总投资规模达15977.4万元，其中建筑面积30000平方米，是西子国际旗下的全资子公司，项目建设内容为杭州西子富沃德精密机械有限公司的清洁铸造和精密加工、装配、发运的联合厂房。项目建成后达到年产6万吨电梯部件清洁铸造及精密加工规模，主要生产电梯核心零部件。通过为西子国际旗下各子公司进行配套，整合资源，打造成西子国际旗下的铸造基地，为西子在装备制造领域的市场开拓、品牌提升打下坚实的基础。

公司重视技术改进，产品质量管理和生产管理，逐步建立了一套完善的适合企业自身发展的管理体系。目前，本公司采用行业内先进、环保的潮模砂工艺、铁模覆砂工艺、树脂砂工艺等铸造工艺。现拥有萨维利（意大利）静压自动造型流水线、应达（美国）中频感应电炉、通过式抛丸机、树脂砂生产线、铁模覆砂生产线等行业领先的铸造设备及精密数控机床加工设备。

质量控制方面现拥有直读式光谱仪、炉前快速分析仪、万能试验机、型砂检测设备、金相显微镜、布氏硬度计等国内较先进的检测设备及过程控制方法运用到实际生产和检测中，保证产品质量。

## Hangzhou Xizi Forvorda Precision Machinery Co., Ltd

Hangzhou XIZI Forvorda Precision Machinery Co., Ltd. is located in Yiyi Village, Yuqian Industrial Zone, Economic Development Zone, Lin'an City, Zhejiang Province, with a total investment of 159.774 million yuan, including a construction area of 30,000 square meters. It is a wholly-owned subsidiary of Xizi International. The construction content of the project is the joint workshop of clean casting, precision machining, assembly and delivery of Hangzhou XIZI Forvorda Precision Machinery Co., Ltd. After the completion of the project, it will achieve an annual output of 60,000 tons of clean casting and precision machining of elevator parts, mainly producing elevator core parts. By supporting and integrating resources for all subsidiaries of XIZI International, we will build a machining base of XIZI International, and lay a solid foundation for the market development and brand promotion of XIZI in the field of equipment manufacturing.

The company attaches great importance to technical improvement, product quality management and production management, and has gradually established a perfect management system suitable for the development of the enterprise itself. At present, the company adopts the industry's advanced, environmental protection of the tide mold sand technology, iron mold sand coating technology, resin sand technology and other casting technology. Now we have the industry's leading casting equipment and precision CNC machining equipment, such as the static pressure automatic molding line from Savelli (Italy), the medium frequency induction furnace from Yingda (America), the pass type shot blasting machine, the resin sand production line, the iron mold sand coating production line and so on.

In terms of quality control, we now have direct reading spectrometer, fast analyzer before furnace, universal testing machine, molding sand testing equipment, metallographic microscope, Brinell hardness tester and other domestic advanced testing equipment and process control methods used in the actual production and testing to ensure product quality.

## 潮模砂工艺

是目前大力推广的清洁铸造工艺之一，达到生产效率、产品精度高、运行噪声低、作业强度低等特点和优势；同时由于该工艺具有节约能源、无污染等特点，可实现清洁铸造。

## Tide molding sand technology

It is one of the clean casting processes vigorously promoted at present, which can achieve the characteristics and advantages of production efficiency, high product precision, low noise and low operation intensity. At the same time, because the process has the characteristics of energy saving and no pollution, it can realize clean casting.



## 铁模覆砂工艺

具有刚性好、覆砂层比较薄、铸件冷却速度快，砂子粒度细等特点，因此可显著提高铸件的尺寸精度、致密性、表面质量、晶粒的细化程度和球化率，同时可实现无冒口铸造。

## Sand covering technology for iron mould

It has the characteristics of good stiffness, thin sand coating, fast casting cooling rate, fine sand particle size, etc., so it can significantly improve the dimensional accuracy, compactness, surface quality, grain refinement and spheroidization rate of the casting, and at the same time, it can realize riser free casting.



## 树脂砂工艺

其工艺特点具有一定的灵活性，生产工艺简单易于控制，适合是量少结构复杂的铸件，且生产的铸件表面轮廓清晰、光洁、几何尺寸精度高。

## Resin sand process

Its process characteristics have a certain flexibility, the production process is simple and easy to control, suitable for a small amount of complex structure of the casting, and the production of the casting surface contour is clear, smooth, high precision geometric dimension.



## 富沃德品牌优势 Brand Building of Xizi Forvorda

2001

第一台国内自主知识产权的无齿轮曳引机诞生于富沃德

The first gearless traction machine with proprietary rights in China was born in Forvorda.



2001

第一台中国生产并在电梯上运用的无齿轮曳引机诞生（杭州新新饭店项目）

The first homemade gearless traction machine installed in elevator (Hangzhou Xinxin Hotel)



2005

组建国内第一条曳引机专用磁钢生产线

Set up the first magnet production line dedicated for traction machines in China



2010

组建国内第一条主机自动化生产线

Set up the first automated production line in China

2008

成功研发国内第一台 7m/s 永磁同步无齿轮曳引机，并于 2010 年成功应用在上海高端楼盘项目  
Successfully developed the first 7m/s PM synchronous traction machine in China, and was installed in a high-end real estate project in Shanghai in 2010

2011

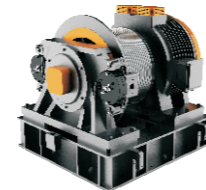
永磁同步电机入围国家“节能产品惠民工程”高效电机推广目录，永磁电机推广量电梯行业第一

Its PM synchronous motor is listed in the High Efficient Motor Directory under the China Energy Label project. Its total sales volume of PM motor ranked No.1 in elevator industry in China.



2014

成功研发 10m/s 超高速主机  
Successfully developed super high speed machine



无齿轮曳引机市场保有量中国第一  
Enjoy the largest market share of PM gearless in China

2012

获得临安市政府质量奖  
Awarded with Lin'an Municipal Quality Awards

2013

成功研发了 DZD1-500 静音制动器产品  
Successfully developed DZD1-500 super quiet brake

2015

荣膺 2015 年浙江省政府质量奖  
Awarded with Zhejiang Province government Quality Award



通过中国 CQC 节能认证证书编号 CQC15701122857  
CQC Approved (code: CQC15701122857)



2016

成功通过 CNAS 实验室（中国合格评定国家认可委员会）审核并获得证书  
Successfully passed the CNAS Laboratory (China National Accreditation Service for Conformity Assessment) and obtain the certification

2017

於潜新工厂于 2017 年 2 月试生产  
YUQIAN new factory starts trial production In February 2017



永磁同步无齿轮曳引机“浙江制造”认证首张证书  
PM gearless traction machine, the first among the similars to win the Made in Zhejiang certificate

后在 2019 年曳引机制动器获“浙江制造”证书



2019

富沃德获得“单项冠军企业”称号，并在 2022 年蝉联该称号。



2020

入选工信部国家“绿色工厂”名单

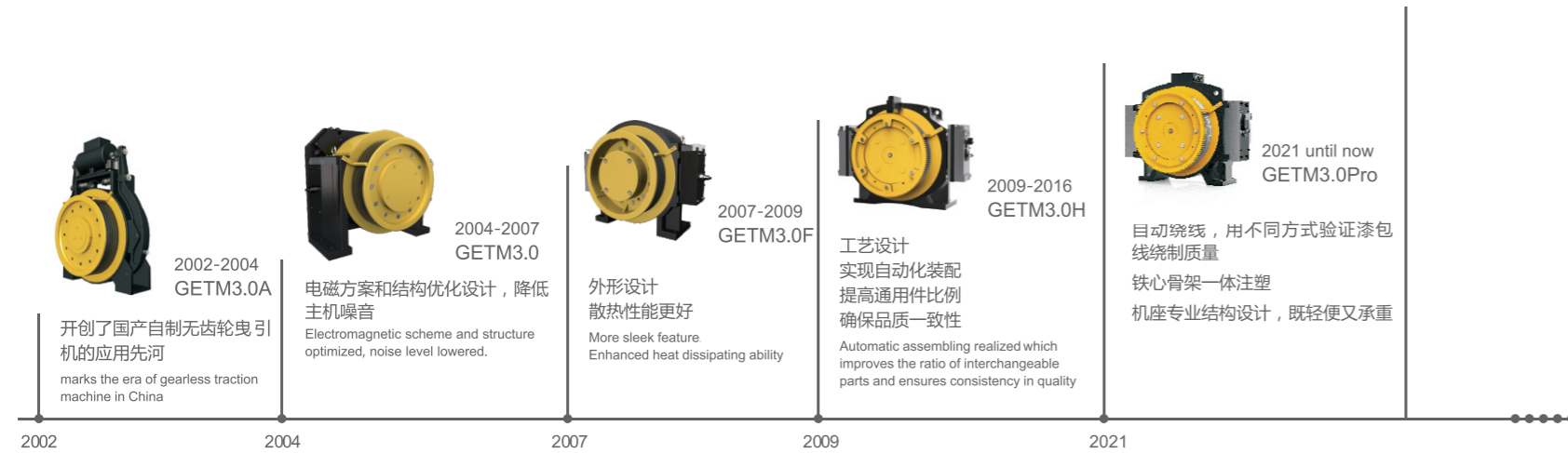
2021

连续多年通过通过德国汽车工业联合会(VDA)质量标准的过程审核。

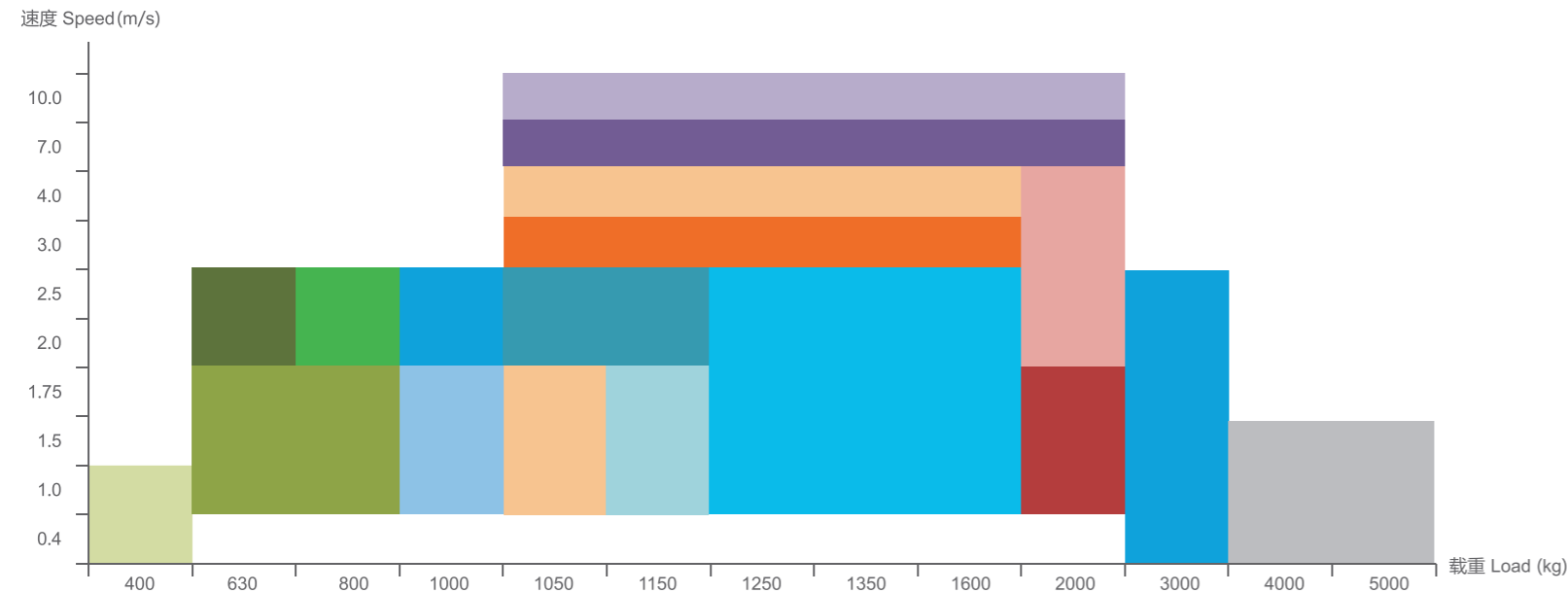


2022 无齿轮曳引机市场保有量突破160万。

## 曳引机发展史 Development History of Traction Machine



## 产品系列 Products Series



## 色卡 Color Code

为了规范主机外观颜色,现将喷漆所用油漆颜色及色号统一为劳尔色卡色号,规定如下

### 标准颜色 Standard Color



银砂黑 RAL9005  
Panther Black



富沃德蓝 RAL5019  
ForvordaBlue



深暮灰 RAL7040  
Deep Gary

### 常用喷涂色卡 Off-Used Color



安全黄 RAL1012  
Safety yellow



石绿松 RAL6016  
Turquoise



雪梨黄 RAL1003  
Snow Pear Yellow



铂金灰 RAL7036  
Platinum Grey



百合彩 RAL9002  
Lily Color



威斯特灰 RAL7004  
Wister Gery



深灰桔纹 RAL7012  
Dark Gery



淡蓝 RAL5012  
Light Blue

色卡颜色仅供参考,具体以实样为准。  
The color sample here for reference only, colour aberration may exist in painting

### 备注

机房内的环境空气温度应保持在 5 °C -40 °C ; 环境相对湿度最湿月月平均应不大于 90% , 同时该月月平均最低温度应不高于 25 °C ; 超出范围请咨询  
客户需根据实际情况计算曳引能力和安全系数是否满足标准要求, 曳引轮β、γ角度可非标  
在应用前已确认变频器与编码器的匹配性  
曳引轮β、γ角度可非标  
曳引机的推荐提升高度为电梯在额定速度 45 秒的运行距离。例如 1m/s 的曳引机, 推荐提升高度为 45m  
样本资料仅供参考。本产品改进的同时, 资料可能有所变化, 恕不另行通知



## 常规客梯主机系列 For General Elevators

该系列主机经过先进的工业和工艺设计，实现了模块化和标准化，可灵活实现制动器与曳引轮间多达三种以上的自由配置组合，通用部件比例得到提高，使用范围广泛，可满足客户不同需求。专业化的技术和标准化的流程完全保证了大批量产品自动化生产和个性化定制的完美结合。

For this series of traction machine, standardization and modularization is realized through advanced industrial and technical design. Interchangeability of parts is greatly improved; there are more than 3 possible combinations by replacing brakes and traction sheave, thus diversified customer needs can be met. Our professionalism and standardized process guarantees the tailor-made production in large scales.



自制稀土材料 NdFeB 高性能磁钢，用专利配合和先进的制造工艺，确保磁钢性能的一致性和稳定性  
In-house made high-performance NdFeB magnet is adopted.

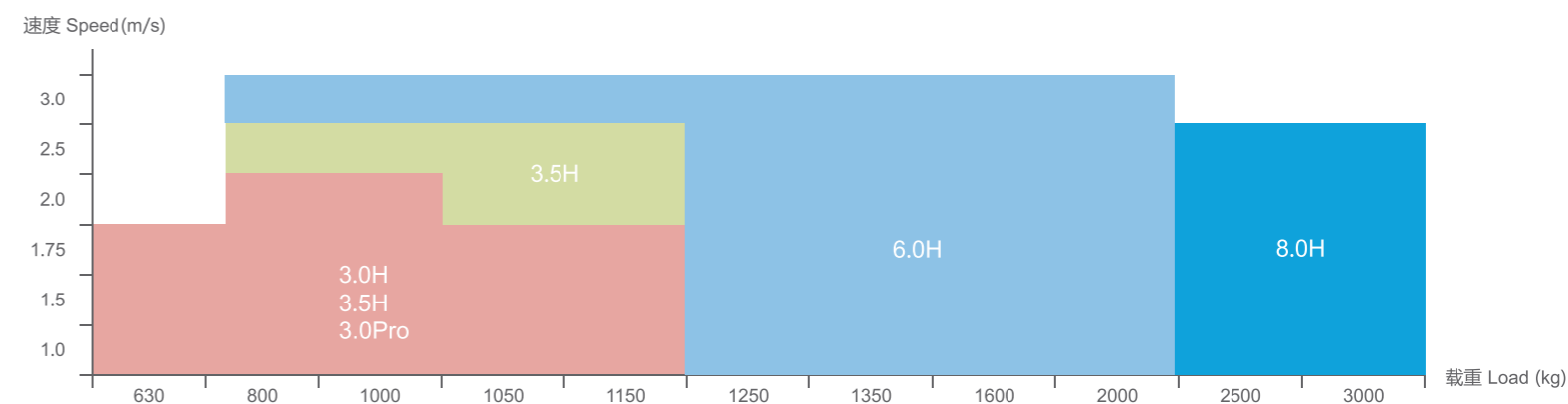


磁钢采用双层固定方式且配有电机过热保护装置，保证电机安全可靠的运行  
The magnets are double fixed and thermal switches are furnished, all of which ensure the reliability of the machine performance.



独特转动轴外转子结构，确保主机运行平稳，噪音低  
Unique rotating shaft and external rotor construction brings smooth operation of the machine and low noise level.

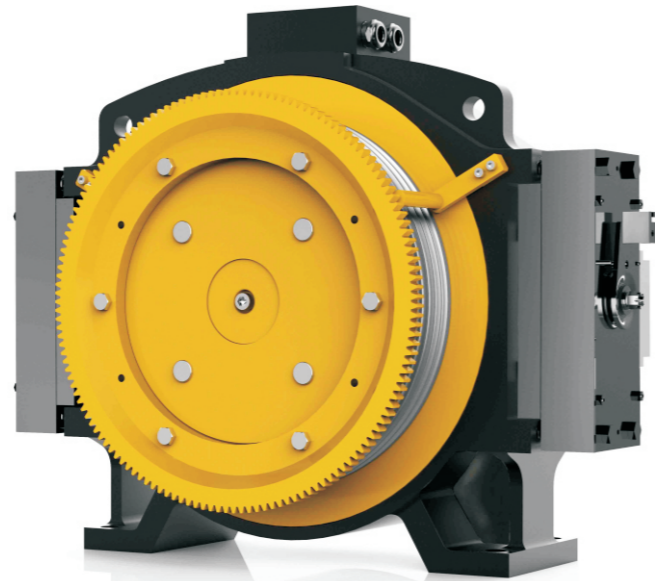
### 产品系列 Products Series





# GETM3.0Pro

许用径向载荷 Max. axle load	3000kg
曳引机概算重量 Motor weight	290kg
启动次数(次/小时) Start-up time	180
绝缘等级 Ins. class	155(F)
制动器型号及数量 Brake type	2只DZD2

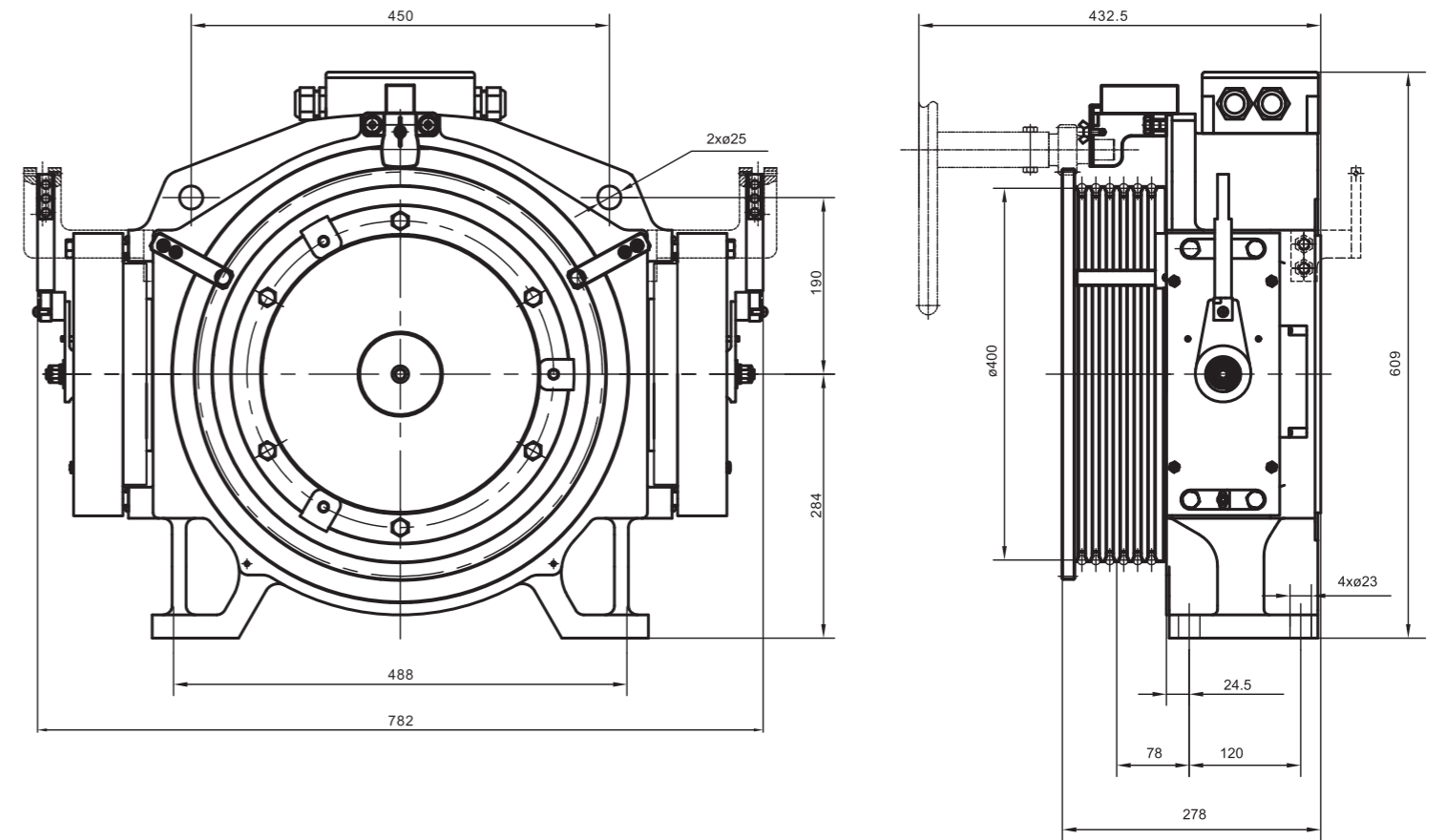


规格表 Specification table

型号 Product type	曳引比 Traction Ratio	额定 载重 Load (kg)	额定 速度 Elevator Speed (m/s)	额定 转速 Rated Speed (r/min)	额定 转矩 Rated torque (N.m)	电机 Motor					曳引轮 Sheave			制动器 Brake	
						功率 Power (kW)	电压 Voltage (V)	电流 Current (A)	级数 Poles (p)	频率 Frequency (Hz)	节径 Diameter (mm)	绳槽数 Rope (n)	槽距 Groove pitche (mm)	电流 Current (A)	电压 Voltage (V)
GETM3.0Pro-100/0800	2:1	800	1	96	500	5.0	340	13	30	23.9	400	≤6×φ10	15	≤ 2x1.5	DC110
1.5			143	511	7.7	19		35.8							
1.75			167	511	8.9	21		41.8							
GETM3.0Pro-100/1000	2:1	1000	1	96	604	6.0	340	15	30	23.9	400	≤6×φ10	15	≤ 2x1.5	DC110
1.5			143.0	639	9.6	23		35.8							
1.75			167	639	11.2	27		41.8							
GETM3.0Pro-100/1050	2:1	1050	1	96	634	6.3	340	16	30	23.9	400	≤6×φ10	15	≤ 2x1.5	DC110
1.5			143	669	10.0	23		35.8							
1.75			167	669	11.7	28		41.8							

注：1、以上信息仅供参考，具体参数请以 ODF 表为准； 2、绳槽数量、β角、γ角可根据客户系统进行非标；  
 Note: 1. Above parameters for information only, final parameters shall be as per ODF. 2. Quantity of rope groove number, β angle and γ angle can be tailor-made according to customer's requests.

外形尺寸图 Overall Dimensions

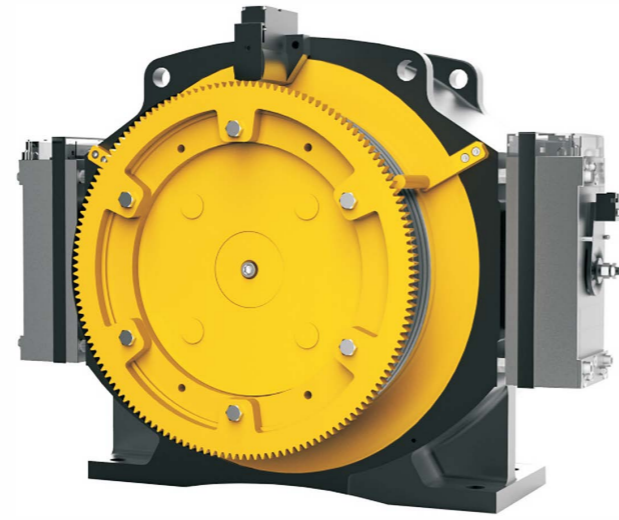


注：1、本机型分为有盘车和无盘车两种状态；  
 2、可配备远程松闸装置，松闸线长 4~10 米。

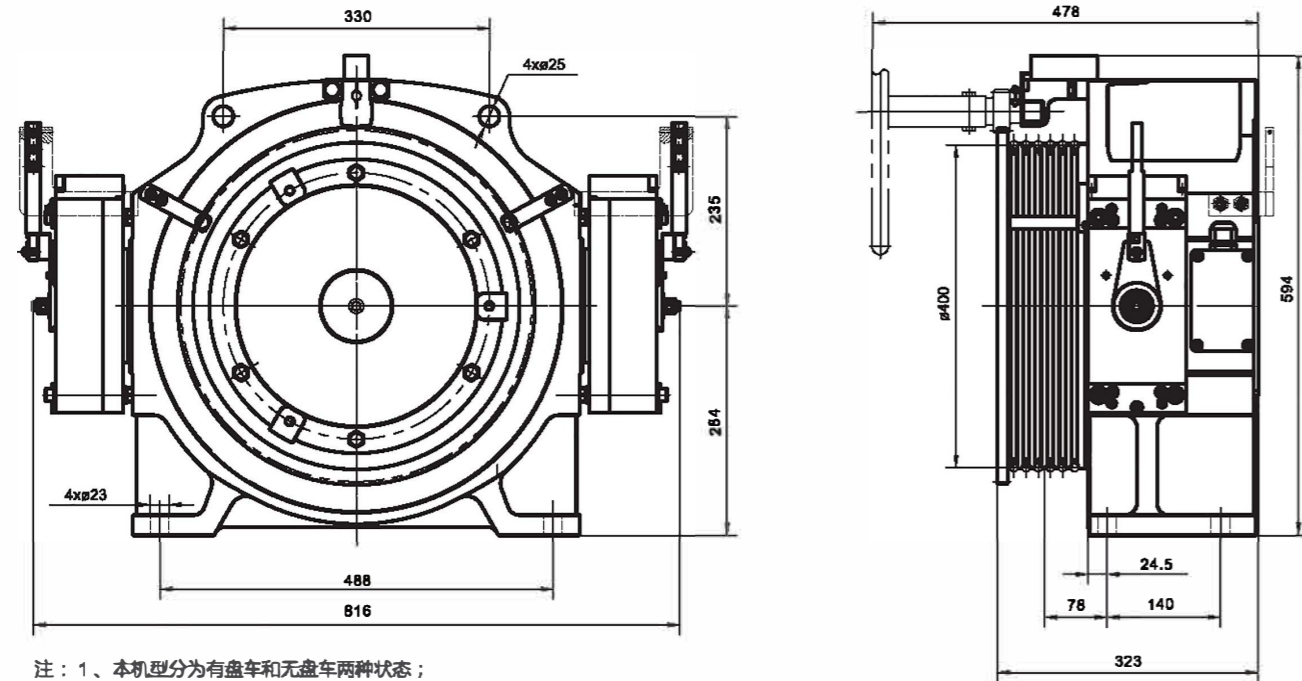
Remarks:  
 1.Both hand wind and hand wind-less types are available.  
 2.Remote release device is available,the length of releasing wire ranges 4-10m.

# GETM3.0H

许用径向载荷 Max. axle load	3000kg
曳引机概算重量 Motor weight	315kg
启动次数(次/小时) Start-up time	180
绝缘等级 Ins. class	155(F)
制动器型号及数量 Brake type	2只DZD1-500



外形尺寸图 Overall Dimensions



注：1、本机型分为有盘车和无盘车两种状态；  
2、可配备远程松闸装置，松闸线长4~10米。

Remarks:  
1. Both hand wind and hand wind-less types are available.  
2. Remote release device is available, the length of releasing wire ranges 4~10m.

## 规格表 Specification table

型号 Product type	曳引比 Traction Ratio	额定 载重 Load (kg)	额定 速度 Elevator Speed (m/s)	额定 转速 Rated Speed (r/min)	额定 转矩 Rated torque (N.m)	电机 Motor					曳引轮 Sheave			制动器 Brake	
						功率 Power (kW)	电压 Voltage (V)	电流 Current (A)	极数 Poles (p)	频率 Frequency (Hz)	节径 Diameter (mm)	绳槽数 Rope (n)	槽距 Groove pitch (mm)	电流 Current (A)	电压 Voltage (V)
GETM3.0H-100/0800	2:1	800	1	96	502	5.0	340	12	32	25.4	400	≤6×φ10	15	≤2x1.5	DC110
GETM3.0H-150/0800			1.5	143	521	7.8		17		38.1					
GETM3.0H-175/0800			1.75	167	514	9.0		21		44.5					
GETM3.0H-200/0800			2.0	191	535	10.7		24		50.9					
GETM3.0H-100/1000	2:1	1000	1	96	604	6.0	340	14	32	25.4	400	≤6×φ10	15	≤2x1.5	DC110
GETM3.0H-150/1000			1.5	143	669	10.0		23		38.1					
GETM3.0H-175/1000			1.75	167	669	11.7		26		44.5					
GETM3.0H-200/1000			2.0	191	669	13.4		30		50.9					
GETM3.0H-100/1050	2:1	1050	1	96	686	6.9	340	16	32	25.4	400	≤6×φ10	15	≤2x1.5	DC110
GETM3.0H-150/1050			1.5	143	686	10.3		23		38.1					
GETM3.0H-175/1050			1.75	167	686	12.0		27		44.5					
GETM3.0H-200/1050			2.0	191	686	14.0		32		50.9					
GETM3.0H-100/1150	2:1	1150	1	96	750	7.5	340	17	32	25.4	400	≤6×φ10	15	≤2x1.5	DC110
GETM3.0H-150/1150			1.5	143	750	11.3		25		38.1					
GETM3.0H-175/1150			1.75	167	750	13.2		30		44.5					
GETM3.0H-200/1150			2.0	191	750	15.0		35		50.9					

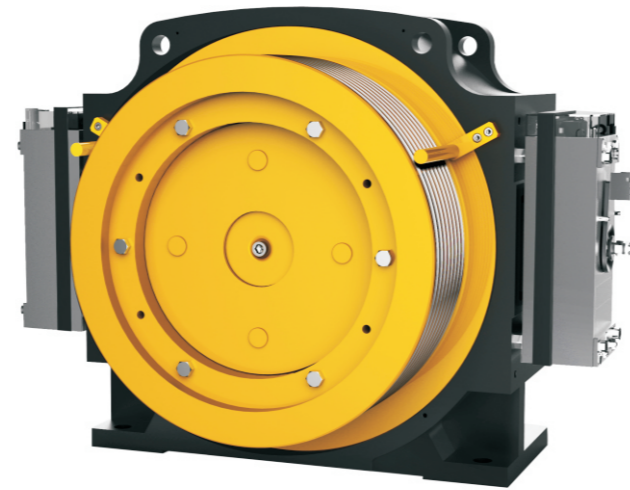
注：1、以上信息仅供参考，具体参数请以 ODF 表为准； 2、绳槽数量、β角、γ角可根据客户系统进行非标；  
Note: 1. Above parameters for information only, final parameters shall be as per ODF. 2. Quantity of rope groove number, β angle and γ angle can be tailor-made according to customer's requests.

型号 Product type	曳引比 Traction Ratio	额定 载重 Load (kg)	额定 速度 Elevator Speed (m/s)	额定 转速 Rated Speed (r/min)	额定 转矩 Rated torque (N.m)	电机 Motor					曳引轮 Sheave			制动器 Brake	
						功率 Power (kW)	电压 Voltage (V)	电流 Current (A)	极数 Poles (p)	频率 Frequency (Hz)	节径 Diameter (mm)	绳槽数 Rope (n)	槽距 Groove pitch (mm)	电流 Current (A)	电压 Voltage (V)
GETM3.0H-100/0630	1:1	630	1	48	775	3.8	340	11	32	12.8	400	≤6×φ10	15	≤2x1.5	DC110
GETM3.0H-175/0630			1.75	84	772	6.8		17		22.4					

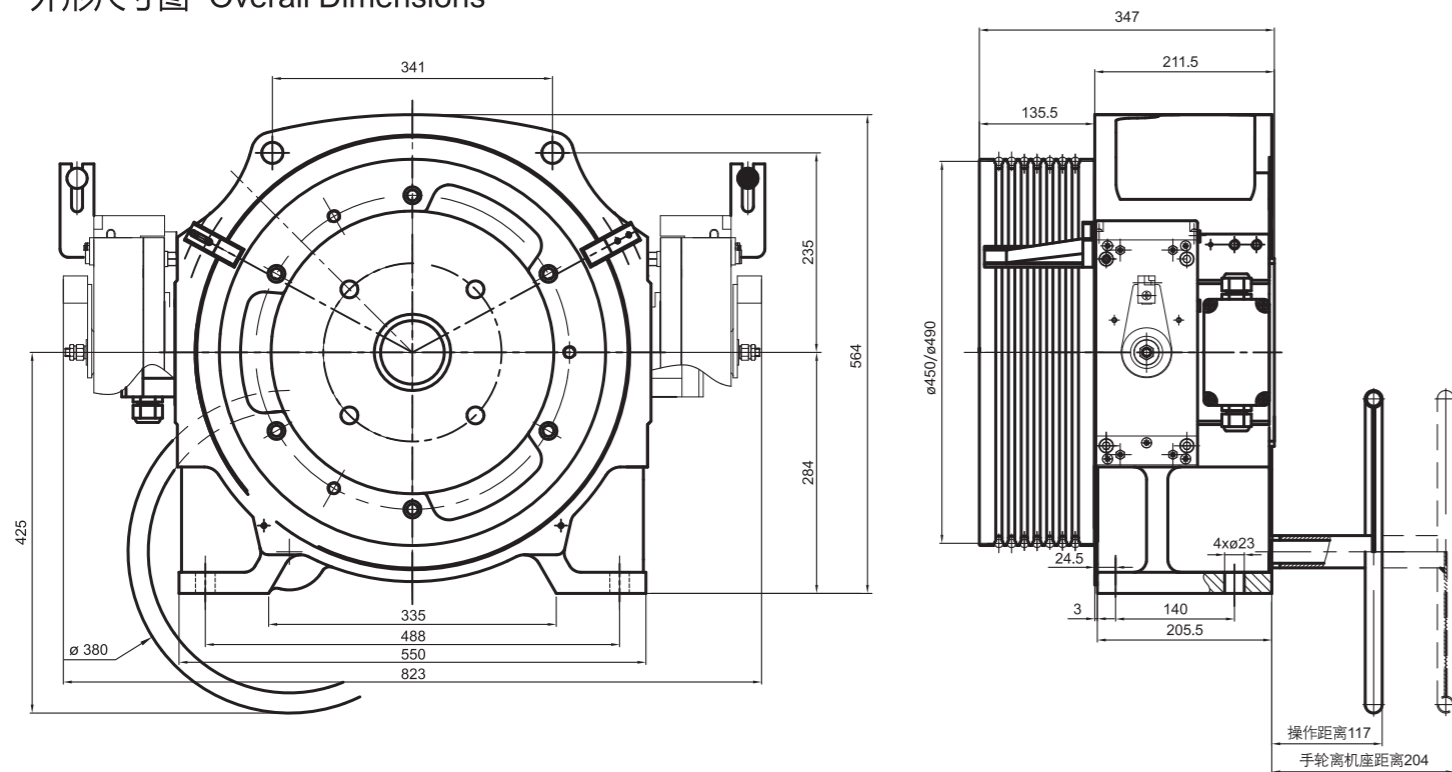
注：1、以上信息仅供参考，具体参数请以 ODF 表为准； 2、绳槽数量、β角、γ角可根据客户系统进行非标；  
Note: 1. Above parameters for information only, final parameters shall be as per ODF. 2. Quantity of rope groove number, β angle and γ angle can be tailor-made according to customer's requests.

# GETM3.5H

许用径向载荷 Max. axle load	3500kg
曳引机概算重量 Motor weight	380-465kg
启动次数(次/小时) Start-up time	180
绝缘等级 Ins. class	155(F)
制动器型号及数量 Brake type	2只DZD1-500



外形尺寸图 Overall Dimensions



- 注：1、本机型分为有盘车和无盘车两种状态；  
2、可配备远程松闸装置，松闸线长4~10米；  
3、曳引轮节径分为φ450和φ490两种。

Remarks:  
1.Both hand wind and hand wind-less types are available.  
2.Remote release device is available,the length of releasing wire ranges 4~10m.  
3.The pitch of the traction sheave has two options as 450mm/490 mm.

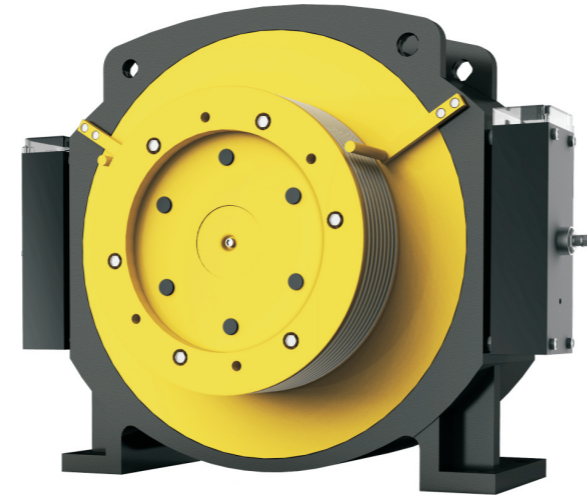
## 规格表 Specification table

型号 Product type	曳引比 Traction Ratio	额定载重 Load (kg)	额定速度 Elevator Speed (m/s)	额定转速 Rated Speed (r/min)	额定转矩 Rated torque (N.m)	电机 Motor					曳引轮 Sheave			制动器 Brake	
						功率 Power (kW)	电压 Voltage (V)	电流 Current (A)	极数 Poles (p)	频率 Frequency (Hz)	节径 Diameter (mm)	绳槽数 Rope Groove pitch (mm)	槽距 Rope pitch (mm)	电流 Current (A)	电压 Voltage (V)
GETM3.5H-175/0800	2:1	800	1.75	136	604	8.6	340	21	32	36.3	490	≤7×φ10	15	≤2x1.5	DC110
GETM3.5H-200/0800			2.0	156	604	9.8		24		41.6		≤7×φ10			
GETM3.5H-250/0800			2.5	195	604	12.3		29		52.0		≤7×φ10			
GETM3.5H-175/1000	2:1	1000	1.75	136	750	10.7	340	26	32	36.3	490	≤7×φ10	15	≤2x1.5	DC110
GETM3.5H-200/1000			2.0	156	750	12.3		30		41.6		≤7×φ10			
GETM3.5H-250/1000			2.5	195	750	15.3		35		52.0		≤7×φ10			
GETM3.5H-100/0800	2:1	800	1	85	604	5.4	340	12	32	22.7	450	≤7×φ10	15	≤2x1.5	DC110
GETM3.5H-150/0800			1.5	127	604	8.0		18		33.9		≤7×φ10			
GETM3.5H-175/0800			1.75	149	604	9.4		22		39.7		≤7×φ10			
GETM3.5H-200/0800			2.0	170	551	9.8		23		45.3		≤7×φ10			
GETM3.5H-250/0800			2.5	212	551	12.3		26		56.5		≤7×φ10			
GETM3.5H-100/1000	2:1	1000	1	85	689	6.1	340	15	32	22.7	450	≤7×φ10	15	≤2x1.5	DC110
GETM3.5H-150/1000			1.5	127	689	9.2		22		33.9		≤7×φ10			
GETM3.5H-175/1000			1.75	149	689	10.7		25		39.7		≤7×φ10			
GETM3.5H-200/1000			2.0	170	689	12.3		27		45.3		≤7×φ10			
GETM3.5H-250/1000			2.5	212	689	15.3		35		56.5		≤7×φ10			
GETM3.5H-100/1050	2:1	1050	1.0	85	723	6.4	340	18	32	22.7	450	≤7×φ10	15	≤2x1.5	DC110
GETM3.5H-150/1050			1.5	127	723	9.6		23		33.9		≤7×φ10			
GETM3.5H-175/1050			1.75	149	723	11.3		26		39.7		≤7×φ10			
GETM3.5H-200/1050			2.0	170	723	12.9		27		45.3		≤7×φ10			
GETM3.5H-250/1050			2.5	212	723	16.1		39		56.5		≤7×φ10			
GETM3.5H-100/1150	2:1	1150	1.0	85	793	7.0	340	18	32	22.7	450	≤8×φ10	15	≤2x1.5	DC110
GETM3.5H-150/1150			1.5	127	793	10.6		23		33.9		≤8×φ10			
GETM3.5H-175/1150			1.75	149	793	12.3		28		39.7		≤8×φ10			
GETM3.5H-200/1150			2.0	170	793	14.1		30		45.3		≤8×φ10			
GETM3.5H-250/1150			2.5	212	793	17.6		40		56.5		≤8×φ10			

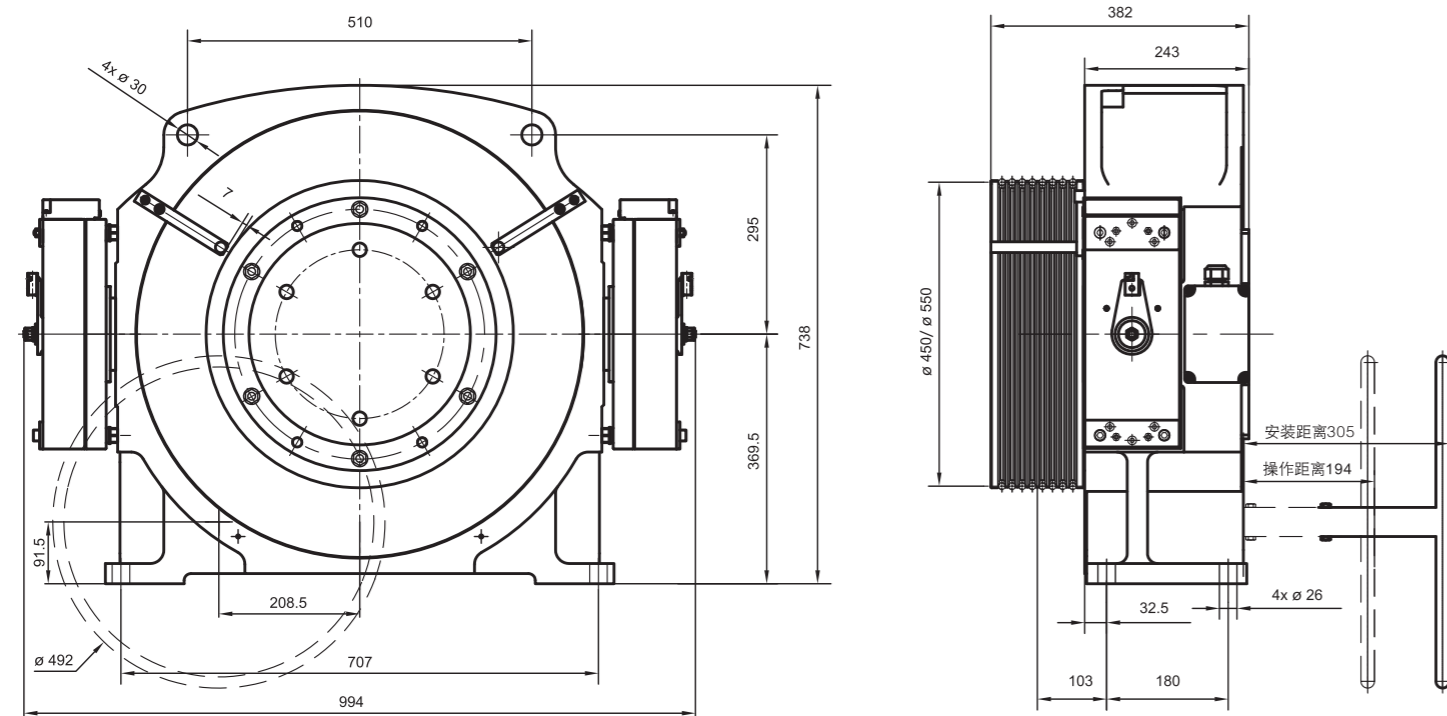
注：1、以上信息仅供参考，具体参数请以 ODF 表为准； 2、绳槽数量、β角、γ角可根据客户系统进行非标；  
Note: 1. Above parameters for information only, final parameters shall be as per ODF. 2. Quantity of rope groove number, β angle and γ angle can be tailor-made according to customer's requests.

# GETM6.0H

许用径向载荷 Max. axle load	6000kg
曳引机概算重量 Motor weight	650-780kg
启动次数(次/小时) Start-up time	180
绝缘等级 Ins. class	155(F)
制动器型号及数量 Brake type	2只DZD1-653



外形尺寸图 Overall Dimensions



- 注：1、本机型分为有盘车和无盘车两种状态；  
2、1600kg 可配备远程松闸装置，松闸线长 4~10 米；  
3、2000kg 不配远程松闸装置。

- Remark:  
1. Both hand-wind and hand-windless is available for this type of machine.  
2. Remote releasing device is available for 1600kg machine, and the length of brake wire ranges from 4m to 10m.  
3. Remote releasing device is not available for 2000kg machine

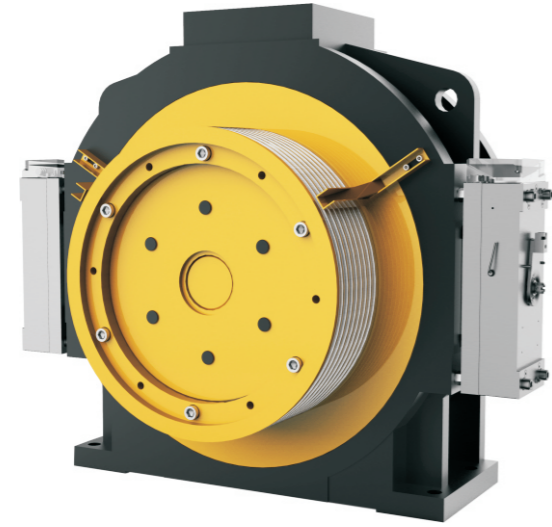
规格表 Specification table

型号 Product type	曳引比 Traction Ratio	额定 载重 Load (kg)	额定 速度 Elevator Speed (m/s)	额定 转速 Rated Speed (r/min)	额定 转矩 Rated torque (N.m)	电机 Motor					曳引轮 Sheave			制动器 Brake	
						功率 Power (kW)	电压 Voltage (V)	电流 Current (A)	极对数 Poles (p)	频率 Frequency (Hz)	节径 Diameter (mm)	绳槽数 Rope (n)	槽距 Groove pitch (mm)	电流 Current (A)	电压 Voltage (V)
GETM6.0H-100/1350	2:1	1350	1	85	992	8.8	340	20	32	22.7	450	≤8×φ10	15	≤2x1.2	DC110
GETM6.0H-150/1350		1350	1.5	127	992	13.2		30		33.9					
GETM6.0H-160/1350		1350	1.6	136	992	14.1		34		36.3					
GETM6.0H-175/1350		1350	1.75	149	992	15.4		34		39.7					
GETM6.0H-200/1350		1350	2	170	992	17.6		38		45.3					
GETM6.0H-250/1350		1350	2.5	212	992	22.1		48		56.5					
GETM6.0H-100/1600	2:1	1600	1	85	1176	10.5	340	23	32	22.7	450	≤8×φ10	15	≤2x1.2	DC110
GETM6.0H-150/1600		1600	1.5	127	1176	15.7		35		33.9					
GETM6.0H-160/1600		1600	1.6	136	1176	16.7		39		36.3					
GETM6.0H-175/1600		1600	1.75	149	1176	18.3		39		39.7					
GETM6.0H-200/1600		1600	2	170	1176	20.9		44		45.3					
GETM6.0H-250/1600		1600	2.5	212	1176	26.1		55		56.5					
GETM6.0H-100/1150	2:1	1150	1	69	1033	7.5	340	18	32	18.4	550	≤6×φ10	15	≤2x1.2	DC110
GETM6.0H-150/1150		1150	1.5	104	1033	11.2		25		27.7					
GETM6.0H-175/1150		1150	1.75	122	1033	13.2		29		32.5					
GETM6.0H-200/1150		1150	2	139	1033	15.0		34		37.1					
GETM6.0H-250/1150		1150	2.5	174	1033	18.7		42		46.4					
GETM6.0H-300/1150		1150	3	208	1033	22.5		48		55.5					
GETM6.0H-100/1350	2:1	1350	1	69	1213	8.8	340	21	32	18.4	550	≤7×φ10	15	≤2x1.2	DC110
GETM6.0H-150/1350		1350	1.5	104	1213	13.2		30		27.7					
GETM6.0H-175/1350		1350	1.75	122	1213	15.4		33		32.5					
GETM6.0H-200/1350		1350	2	139	1213	17.6		40		37.1					
GETM6.0H-250/1350		1350	2.5	174	1213	22.1		46		46.4					
GETM6.0H-300/1350		1350	3	208	1213	26.5		57		55.5					
GETM6.0H-100/1600	2:1	1600	1	69	1437	10.5	340	23	32	18.4	550	≤8×φ10	15	≤2x1.2	DC110
GETM6.0H-150/1600		1600	1.5	104	1437	15.7		35		27.7					
GETM6.0H-175/1600		1600	1.75	122	1437	18.3		40		32.5					
GETM6.0H-200/1600		1600	2	139	1437	20.9		46		37.1					
GETM6.0H-250/1600		1600	2.5	174	1437	26.1		56		46.4					
GETM6.0H-300/1600		1600	3	208	1470	32.1		70		55.5					

型号 Product type	曳引比 Traction Ratio	额定 载重 Load (kg)	额定 速度 Elevator Speed (m/s)	额定 转速 Rated Speed (r/min)	额定 转矩 Rated torque (N.m)	电机 Motor					曳引轮 Sheave			制动器 Brake	
						功率 Power (kW)	电压 Voltage (V)	电流 Current (A)	极对数 Poles (p)	频率 Frequency (Hz)	节径 Diameter (mm)	绳槽数 Rope (n)	槽距 Groove pitch (mm)	电流 Current (A)	电压 Voltage (V)
GETM6.0H-100/0800	1:1	800	1	43	1103	5.0	340	12	32	11.5	450	≤8×φ10	15	≤2x1.2	DC110
GETM6.0H-175/0800		800	1.75	74	1103	8.6		21		19.7					
GETM6.0H-200/0800		800	2	86	1103	10.0		24		22.9					
GETM6.0H-100/1000	1:1	1000	1	40	1470	6.1	340	15	32	10.7	480	≤8×φ10	15	≤2x1.2	DC110
GETM6.0H-175/1000		1000	1.75	70	1470	10.7		26		18.7					
GETM6.0H-200/1000		1000	2	80	1470	12.3		29		21.3					
GETM6.0H-100/1150	1:1	1150	1	40	1691	7.1	340	17	32	10.7	480	≤8×φ10	15	≤2x1.7	DC110
GETM6.0H-175/1150		1150	1.75	70	1691	12.3		29		18.7					
GETM6.0H-200/1150		1150	2	80	1691	14.1		34		21.3					

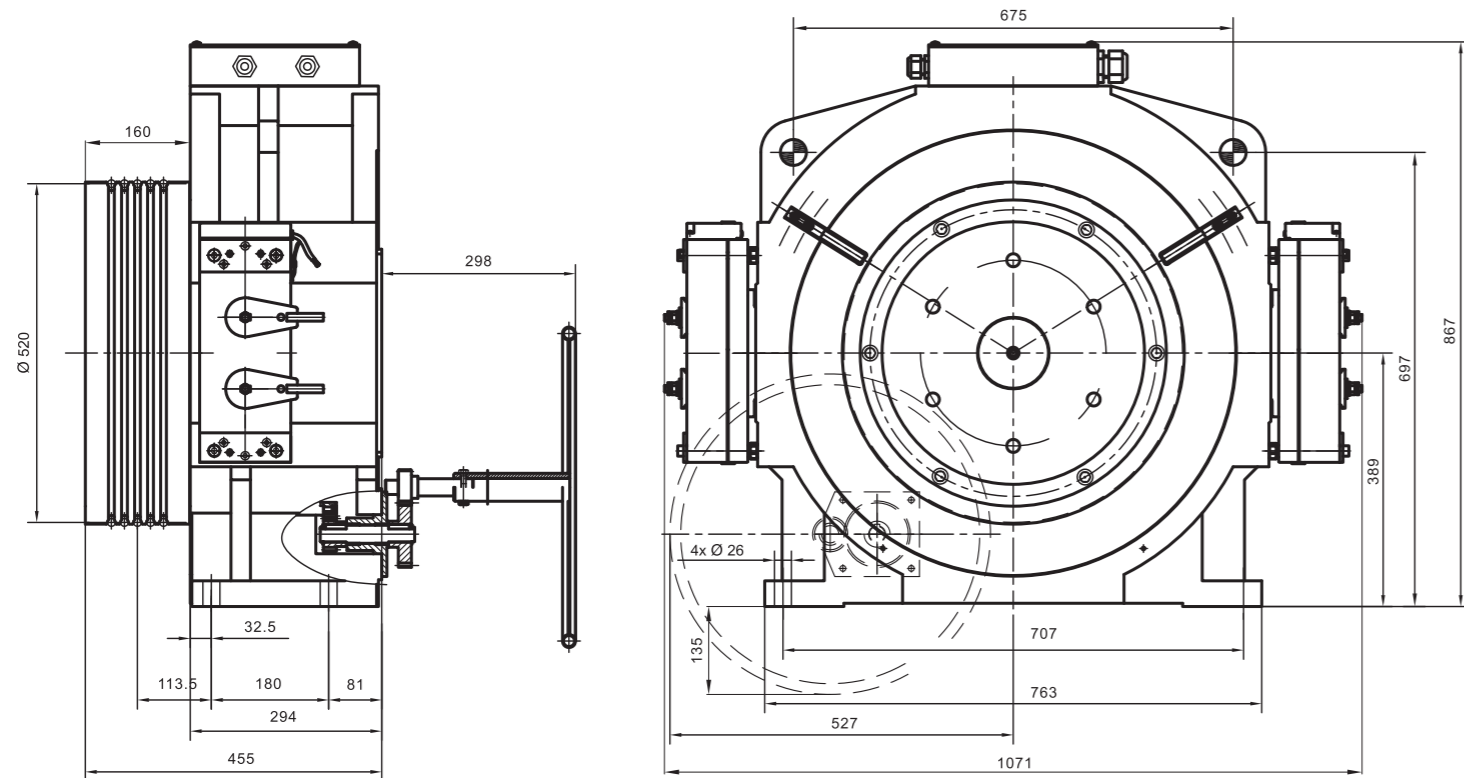
- 注：1、以上信息仅供参考，具体参数请以 ODF 表为准； 2、绳槽数量、β角、γ角可根据客户系统进行非标；  
Note: 1. Above parameters for information only, final parameters shall be as per ODF. 2. Quantity of rope groove number, β angle and γ angle can be tailor-made according to customer's requests.

# GETM8.0H



许用径向载荷 Max. axle load	8000kg
曳引机概算重量 Motor weight	1010kg
启动次数(次/小时) Start-up time	180
绝缘等级 Ins. class	155(F)
制动器型号及数量 Brake type	2只DZD1-21800/2 只 DZD1-25000

外形尺寸图 Overall Dimensions



## 规格表 Specification table

型号 Product type	曳引比 Traction Ratio	额定 载重 Load (kg)	额定 速度 Elevator Speed (m/s)	额定 转速 Rated Speed (r/min)	额定 转矩 Rated torque (N.m)	电机 Motor					曳引轮 Sheave			制动器 Brake			
						功率 Power (kW)	电压 Voltage (V)	电流 Current (A)	级数 Poles (p)	频率 Frequency (Hz)	节径 Diameter (mm)	绳槽数 Rope (n)	槽距 Groove pitche (mm)	型号 Type	电流 Current (A)	电压 Voltage (V)	
GETM8.0H-100/2000	2:1	2000	1	74	1737	13.4	340	32	32	19.6	520	≤7×φ13	20	DZD1-21800	≤2x1.8	DC 110	
GETM8.0H-150/2000			1.5	110	1737	20.0		44		29.3							
GETM8.0H-175/2000			1.75	129	1737	23.4		52		34.3							39.2
GETM8.0H-200/2000			2	147	1737	26.7		63		39.2							
GETM8.0H-250/2000			2.5	184	1737	33.4		76		49.1							
GETM8.0H-100/2500	2:1	2500	1	74	2172	16.7	340	35	32	19.6	520	≤7×φ13	20	DZD1-21800	≤2x1.8	DC 110	
GETM8.0H-150/2500			1.5	110	2172	25.0		56		29.3							
GETM8.0H-175/2500			1.75	129	2172	29.2		66		34.3							39.2
GETM8.0H-200/2500			2	147	2172	33.4		75		39.2							
GETM8.0H-250/2500			2.5	184	2172	41.8		88		49.1							

型号 Product type	曳引比 Traction Ratio	额定 载重 Load (kg)	额定 速度 Elevator Speed (m/s)	额定 转速 Rated Speed (r/min)	额定 转矩 Rated torque (N.m)	电机 Motor					曳引轮 Sheave			制动器 Brake		
						功率 Power (kW)	电压 Voltage (V)	电流 Current (A)	级数 Poles (p)	频率 Frequency (Hz)	节径 Diameter (mm)	绳槽数 Rope (n)	槽距 Groove pitche (mm)	型号 Type	电流 Current (A)	电压 Voltage (V)
GETM8.0H-100/1350	1:1	1350	1	37	2150	8.3	340	20	32	9.9	520	≤7×φ13	20	DZD1-25000	≤2x2.7	激励DC 200 维持DC 100
GETM8.0H-175/1350			1.75	64	2150	14.5		35		17.1						
GETM8.0H-200/1350			2	74	2150	16.5		40		19.7						
GETM8.0H-100/1600	1:1	1350	1	37	2548	9.8	340	24	32	9.9	520	≤7×φ13	20	DZD1-25000	≤2x2.7	激励DC 200 维持DC 100
GETM8.0H-175/1600			1.75	64	2548	17.2		41		17.1						
GETM8.0H-200/1600			2	74	2548	19.6		47		19.7						

注：1、以上信息仅供参考，具体参数请以 ODF 表为准； 2、绳槽数量、β角、γ角可根据客户系统进行非标；  
 Note: 1. Above parameters for information only, final parameters shall be as per ODF. 2. Quantity of rope groove number, β angle and γ angle can be tailor-made according to customer's requests.



## 超薄主机系列 Flat Machine



使用光电编码器前置，可在不移动导轨的情况下拆装编码器  
The photoelectric encoder is used in front, and the encoder can be disassembled without moving the guide rail

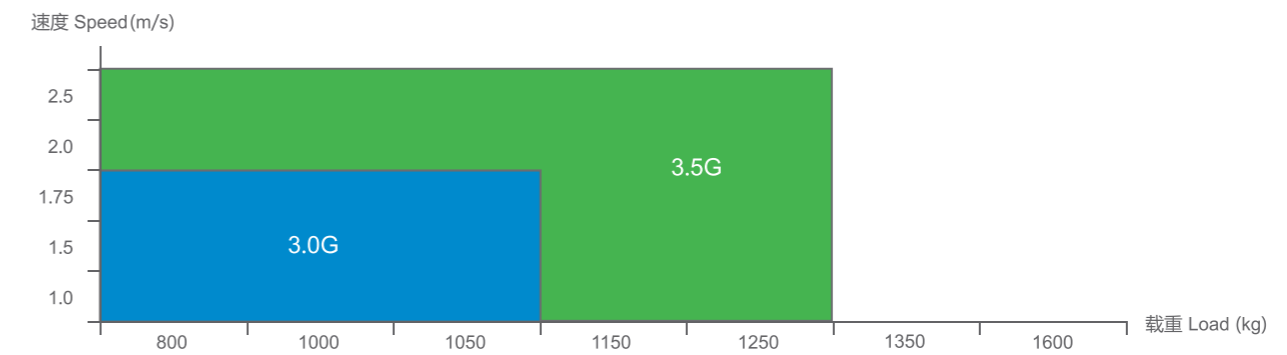


选用静音、快调制动器，工地调节维护简便  
Super-quiet & easily-adjustable brakes used, make the work-site maintenance and adjustment an easy job.

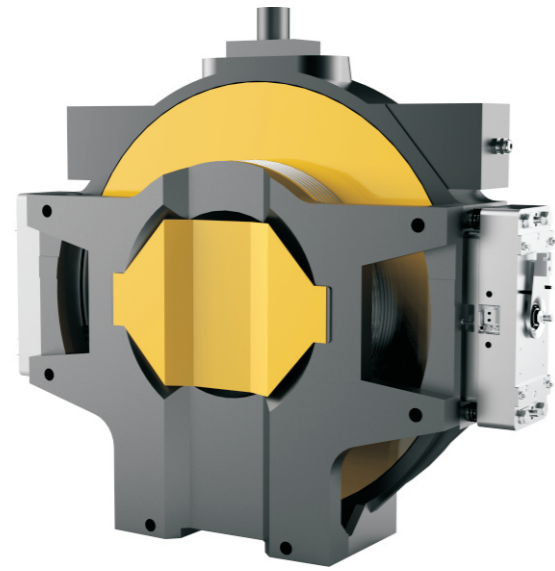


可用于导轨安装  
Applicable for rail mounting.

### 产品系列 Products Series



# GETM3.0G



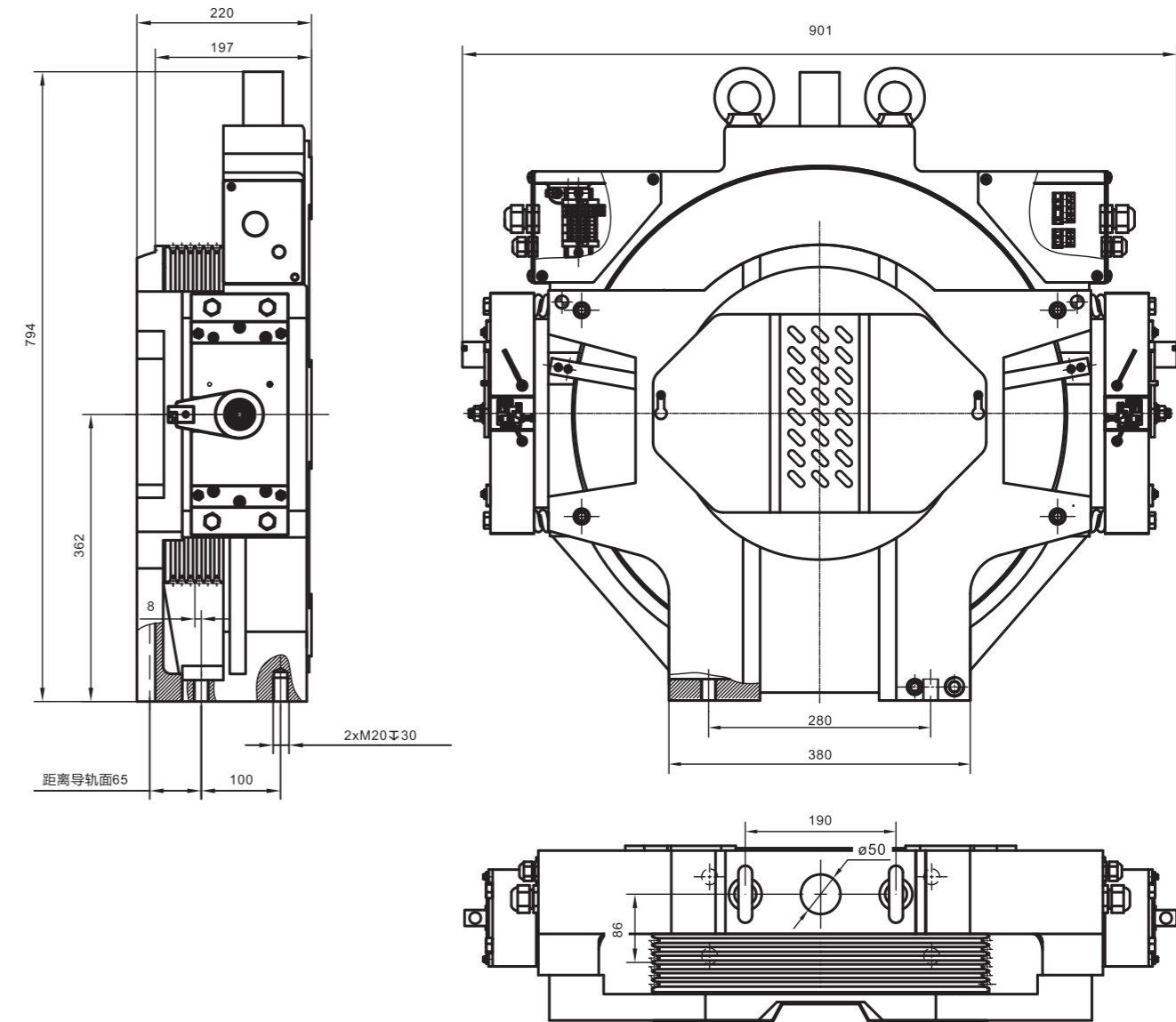
许用径向载荷 Max. axle load	3000kg
曳引机概算重量 Motor weight	330kg
启动次数(次/小时) Start-up time	180
绝缘等级 Ins. class	155(F)
制动器型号及数量 Brake type	2只DZD2

规格表 Specification table

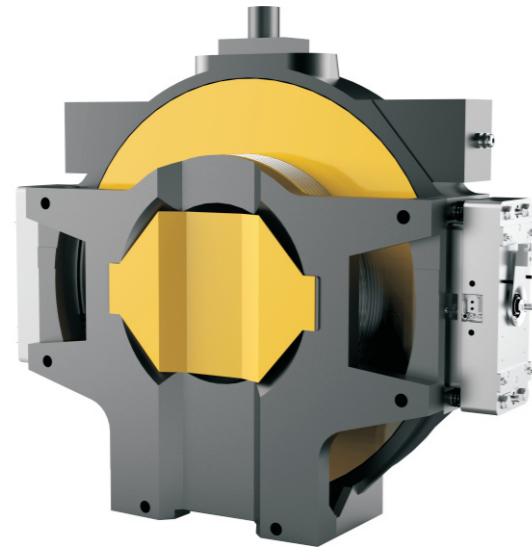
型号 Product type	曳引比 Traction Ratio	额定 载重 Load (kg)	额定 速度 Elevator Speed (m/s)	额定 转速 Rated Speed (r/min)	额定 转矩 Rated torque (N.m)	电机 Motor					曳引轮 Sheave			制动器 Brake	
						功率 Power (kW)	电压 Voltage (V)	电流 Current (A)	级数 Poles (p)	频率 Frequency (Hz)	节径 Diameter (mm)	绳槽数 Rope (n)	槽距 Groove pitch (mm)	电流 Current (A)	电压 Voltage (V)
GETM3.0G-100/0630	2:1	630	1	91	402	3.8	340	9	40	15.2	420	≤6×φ8	11	≤2x1.5	DC110
GETM3.0G-150/0630			1.5	136	402	5.7		14		22.7					
GETM3.0G-175/0630			1.75	159	402	6.7		17		26.5					
GETM3.0G-175/0630			2	182	402	7.6		18		30.4					
GETM3.0G-100/0800	2:1	800	1	91	510	4.8	340	12	40	15.2	420	≤6×φ8	11	≤2x1.5	DC110
GETM3.0G-150/0800			1.5	136	510	7.3		17		22.7					
GETM3.0G-175/0800			1.75	159	510	8.5		21		26.5					
GETM3.0G-175/0800			2	182	510	9.6		23		30.4					
GETM3.0G-100/1000	2:1	1000	1	91	630	6	340	14	40	15.2	420	≤6×φ8	11	≤2x1.5	DC110
GETM3.0G-150/1000			1.5	136	630	9.0		23		22.7					
GETM3.0G-175/1000			1.75	159	630	10.6		26		26.5					
GETM3.0G-175/1000			2	182	630	12.0		28		30.4					
GETM3.0G-100/1050	2:1	1050	1	91	665	6.3	340	16	40	15.2	420	≤6×φ8	11	≤2x1.5	DC110
GETM3.0G-150/1050			1.5	136	665	9.5		23		22.7					
GETM3.0G-175/1050			1.75	159	665	11.1		27		26.5					
GETM3.0G-175/1050			2	182	665	12.6		30		30.4					

注：1、以上信息仅供参考，具体参数请以 ODF 表为准； 2、绳槽数量、β角、γ角可根据客户系统进行非标；  
 Note: 1. Above parameters for information only, final parameters shall be as per ODF. 2. Quantity of rope groove number, β angle and γ angle can be tailor-made according to customer's requests

## 外形尺寸图 Overall Dimensions



# GETM3.5G



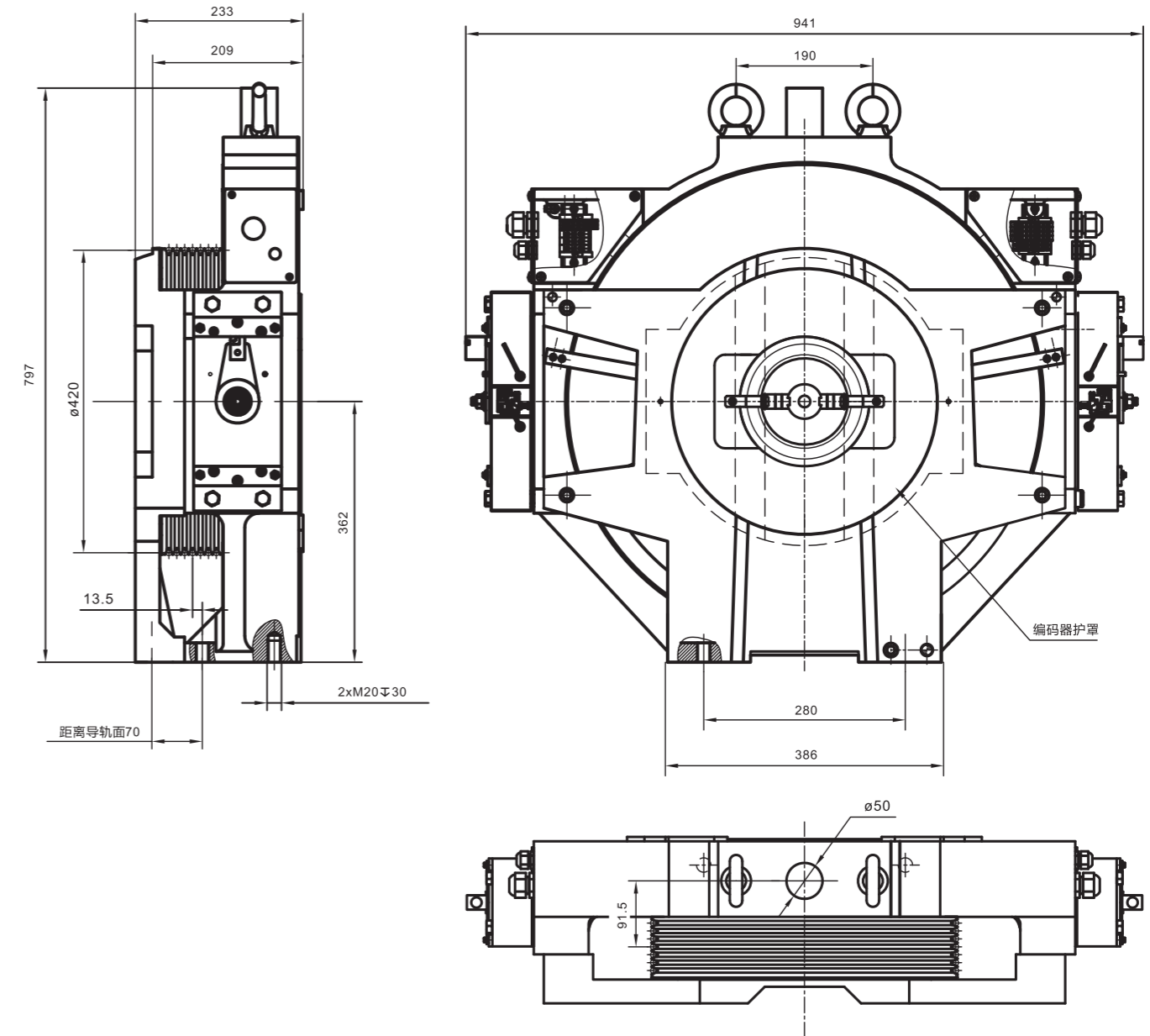
许用径向载荷 Max. axle load	3500kg
曳引机概算重量 Motor weight	340kg
启动次数(次/小时) Start-up time	180
绝缘等级 Ins. class	155(F)
制动器型号及数量 Brake type	2只DZD2

规格表 Specification table

型号 Product type	曳引比 Traction Ratio	额定载重 Load (kg)	额定速度 Elevator Speed (m/s)	额定转速 Rated Speed (r/min)	额定转矩 Rated torque (N.m)	电机 Motor					曳引轮 Sheave			制动器 Brake	
						功率 Power (kW)	电压 Voltage (V)	电流 Current (A)	级数 Poles (p)	频率 Frequency (Hz)	节径 Diameter (mm)	绳槽数 Rope (n)	槽距 Groove pitch (mm)	电流 Current (A)	电压 Voltage (V)
GETM3.5G-100/1150	2:1	1150	1	91	728	6.9	340	16	20	15.2	420	≤6×φ8	11	≤2x1.5	DC110
GETM3.5G-150/1150			1.5	136	728	10.4				22.7					
GETM3.5G-175/1150			1.75	159	728	12.1				26.5					
GETM3.5G-200/1150			2	182	728	13.8				30.3					
GETM3.5G-250/1150			2.5	227	728	17.3				37.8					
GETM3.5G-100/1250	2:1	1250	1	91	791	7.5	340	17	20	15.2	420	≤7×φ8	11	≤2x1.5	DC110
GETM3.5G-150/1250			1.5	136	791	11.3				22.7					
GETM3.5G-175/1250			1.75	159	791	13.1				26.5					
GETM3.5G-200/1250			2	182	791	15.0				30.3					
GETM3.5G-250/1250			2.5	227	791	18.8				37.8					

注：1、以上信息仅供参考，具体参数请以 ODF 表为准； 2、绳槽数量、β角、γ角可根据客户系统进行非标；  
 Note: 1. Above parameters for information only, final parameters shall be as per ODF. 2. Quantity of rope groove number, β angle and γ angle can be tailor-made according to customer's requests.

# 外形尺寸图 Overall Dimensions







## 条形机系列 Bar-Shaped Machine

该系列主机采用自主研发耐高温稀土材料磁钢，精选国际知名配件，并运用内转子结构，使产品各项技术指标远远优于行业标准。该系列主机采用长条形结构，使整体结构紧凑，体积小，同时噪音低。卓越品质和优异性能使其适用于无机房、小机房客梯等。

High-performance heat-resisting NdFeB magnet is adopted, key parts are sourced from world famous suppliers and external rotor construction is adopted, all of which makes the performance exceeds the requirements in relevant industrial standards. This series of machine is of flat or bar shape, which makes the machine compact in structure and small in size. The noise level is low. The remarkable quality and outstanding performance makes this series an ideal choice for MRL elevator and MMR elevator.



低温升、低噪音、高效平稳  
Low temperature rise, low noise level, high efficient and smooth.



采用自制耐高温稀土材料磁钢，稳定可靠，并设置电机过热保护装置，确保电机永不退磁  
In-house made heat-resisting NdFeB magnet is adopted to insure the reliability and stability. Thermal switch is furnished to make sure that the demagnetization will never occur.

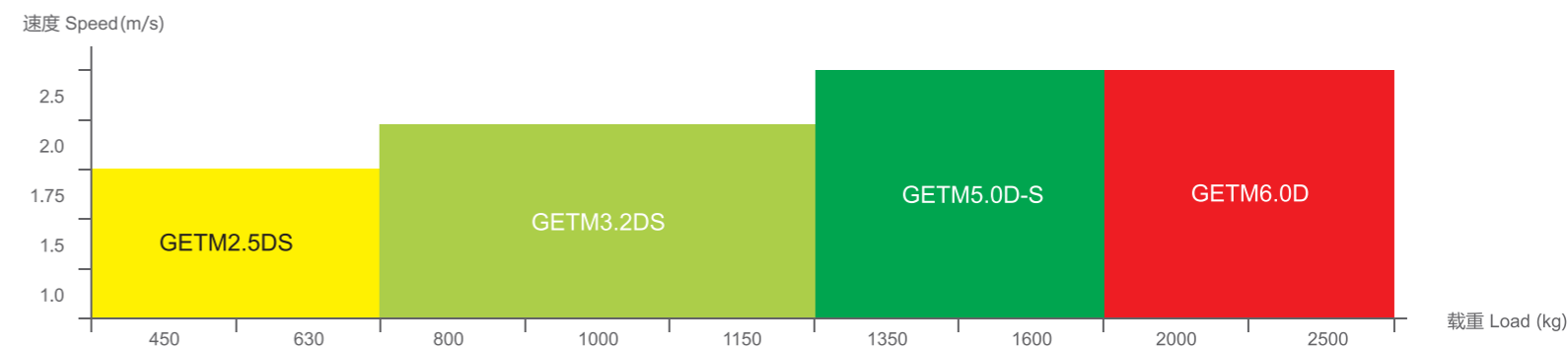


ZSD1 制动器同时满足新国标、新型规要求  
ZSD1 brake meets the requirements of new national standards and new specifications

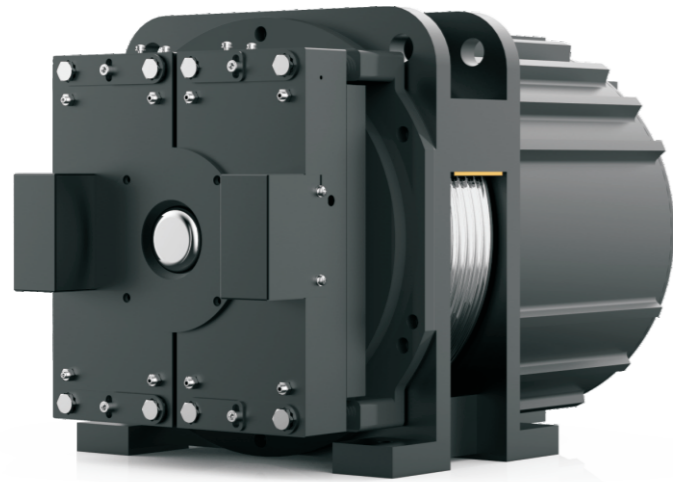


制动器采用快调结构，维护简便  
The brake adopts quick-adjusting structure, which is easy to maintain

### 产品系列 Products Series



# GETM2.5DS



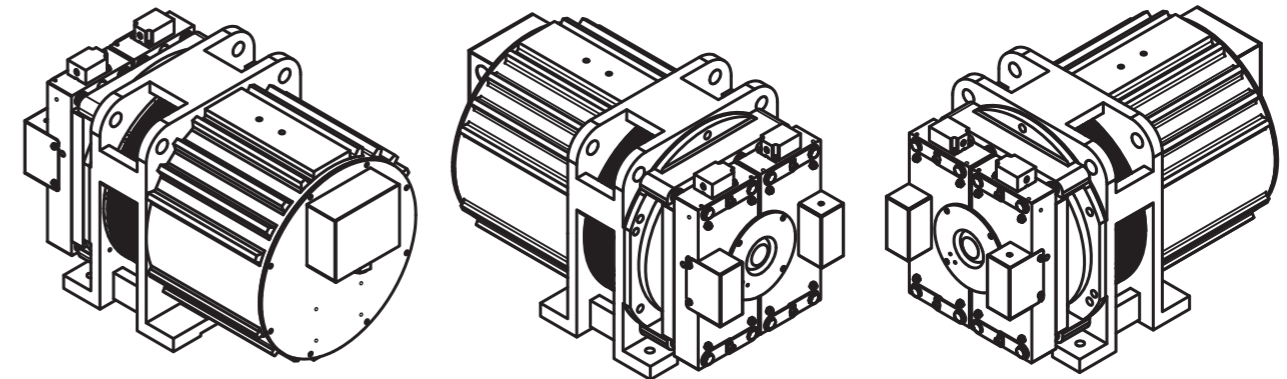
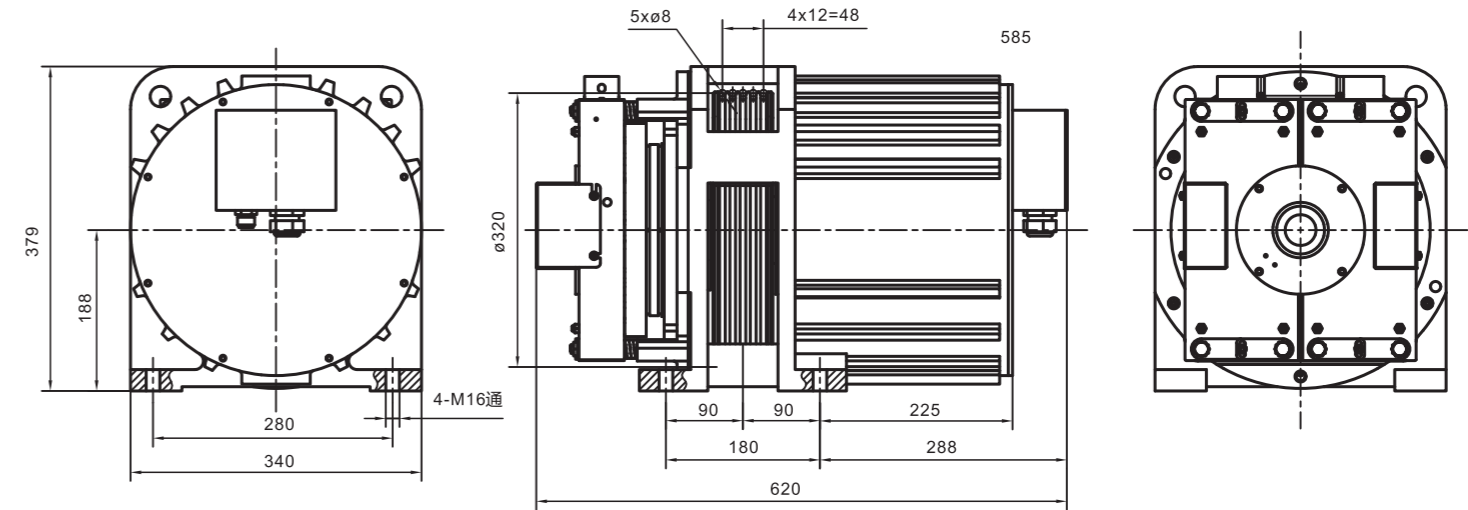
许用径向载荷 Max. axle load	2500kg
曳引机概算重量 Motor weight	208kg
启动次数(次/小时) Start-up time	180
绝缘等级 Ins. class	155(F)
制动器型号及数量 Brake type	1对ZSD1-450

规格表 Specification table

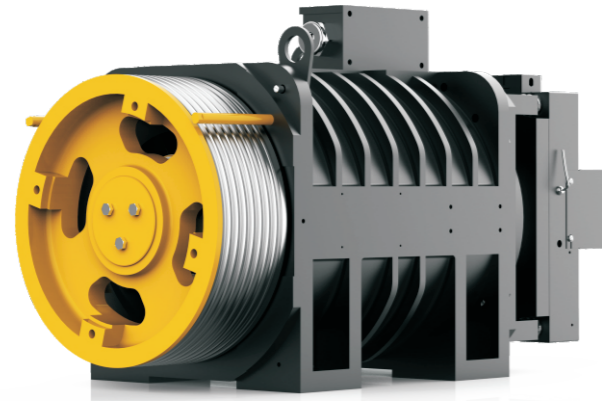
型号 Product type	曳引比 Traction Ratio	额定 载重 Load (kg)	额定 速度 Elevator Speed (m/s)	额定 转速 Rated Speed (r/min)	额定 转矩 Rated torque (N.m)	电机 Motor					曳引轮 Sheave			制动器 Brake	
						功率 Power (kW)	电压 Voltage (V)	电流 Current (A)	级数 Poles (p)	频率 Frequency (Hz)	节径 Diameter (mm)	绳槽数 Rope (n)	槽距 Groove pitch (mm)	电流 Current (A)	电压 Voltage (V)
GETM2.5DS-100/0630	2:1	630	1	119	329	4.1	340	10	20	19.8	320	≤5×φ8	12	≤2x1.5	DC 110V
GETM2.5DS-150/0630			1.5	179	337	6.3		15		29.8					
GETM2.5DS-175/0630			1.75	209	337	7.4		17		34.8					

注：1、以上信息仅供参考，具体参数请以 ODF 表为准； 2、绳槽数量、β角、γ角可根据客户系统进行非标；  
 Note: 1. Above parameters for information only, final parameters shall be as per ODF. 2. Quantity of rope groove number, β angle and γ angle can be tailor-made according to customer's requests.

# 外形尺寸图 Overall Dimensions



# GETM3.2DS



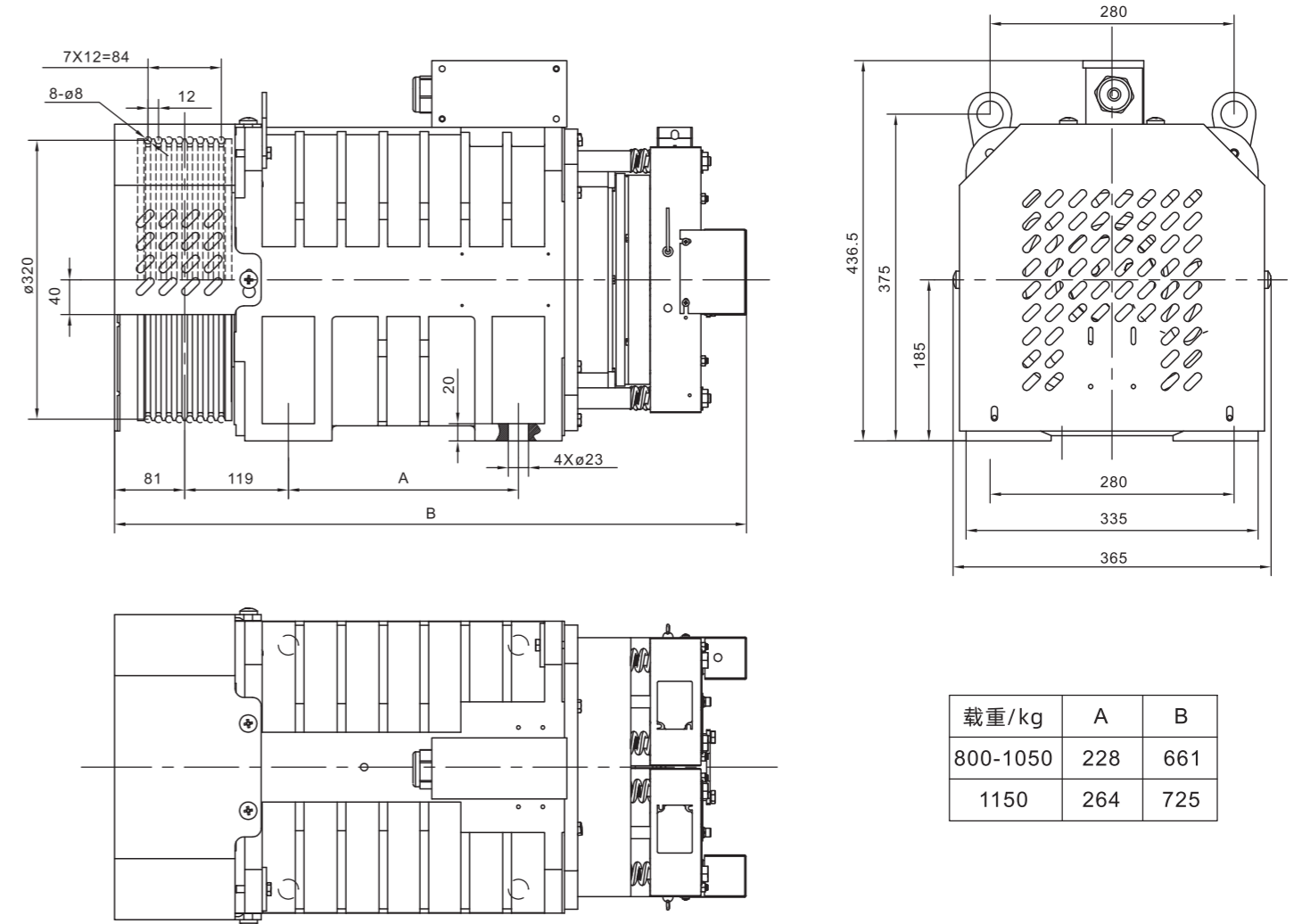
许用径向载荷 Max. axle load	3200kg/3500kg
曳引机概算重量 Motor weight	260kg
启动次数(次/小时) Start-up time	180
绝缘等级 Ins. class	155(F)
制动器型号及数量 Brake type	1对ZSD1-770

规格表 Specification table

型号 Product type	曳引比 Traction Ratio	额定载重 Load (kg)	额定速度 Elevator Speed (m/s)	额定转速 Rated Speed (r/min)	额定转矩 Rated torque (N.m)	电机 Motor					曳引轮 Sheave			制动器 Brake	
						功率 (kW)	电压 (V)	电流 (A)	级数 (p)	频率 (Hz)	节径 (mm)	绳槽数 (n)	槽距 (mm)	电流 (A)	电压 (V)
GETM3.2DS-100/0630	2:1	630	1	119	329	4.1	340	10	20	19.8	320	≤8×φ8	12	≤2x1.5	DC110
GETM3.2DS-150/0630			1.5	179	337	6.3		15		29.8					
GETM3.2DS-175/0630			1.75	209	337	7.4		17		34.8					
GETM3.2DS-200/0630			2	239	337	8.4		20		39.8					
GETM3.2DS-100/0800	2:1	800	1	119	401	5.0	340	13	20	19.8	320	≤8×φ8	12	≤2x1.5	DC110
GETM3.2DS-150/0800			1.5	179	401	7.5		18		29.8					
GETM3.2DS-175/0800			1.75	209	428	9.3		22		34.8					
GETM3.2DS-200/0800			2	239	428	10.7		27		39.8					
GETM3.2DS-100/1000	2:1	1000	1	119	482	6.0	340	15	20	19.8	320	≤8×φ8	12	≤2x1.5	DC110
GETM3.2DS-150/1000			1.5	179	482	9.0		22		29.8					
GETM3.2DS-175/1000			1.75	209	534	11.7		28		34.8					
GETM3.2DS-200/1000			2	239	534	13.4		32		39.8					
GETM3.2DS-100/1050	2:1	1050	1	119	506	6.3	340	16	20	19.8	320	≤8×φ8	12	≤2x1.5	DC110
GETM3.2DS-150/1050			1.5	179	506	9.5		23		29.8					
GETM3.2DS-175/1050			1.75	209	561	12.3		30		34.8					
GETM3.2DS-200/1050			2	239	561	14.0		34		39.8					
GETM3.2DS-100/1150	2:1	1150	1	119	615	7.7	340	20	20	19.8	320	≤8×φ8	12	≤2x1.5	DC110
GETM3.2DS-150/1150			1.5	179	615	11.5		27		29.8					
GETM3.2DS-175/1150			1.75	209	615	13.5		30		34.8					
GETM3.2DS-200/1150			2	239	615	15.4		37		39.8					

注：1、以上信息仅供参考，具体参数请以 ODF 表为准； 2、绳槽数量、β角、γ角可根据客户系统进行非标；  
 Note: 1. Above parameters for information only, final parameters shall be as per ODF. 2. Quantity of rope groove number, β angle and γ angle can be tailor-made according to customer's requests.

# 外形尺寸图 Overall Dimensions

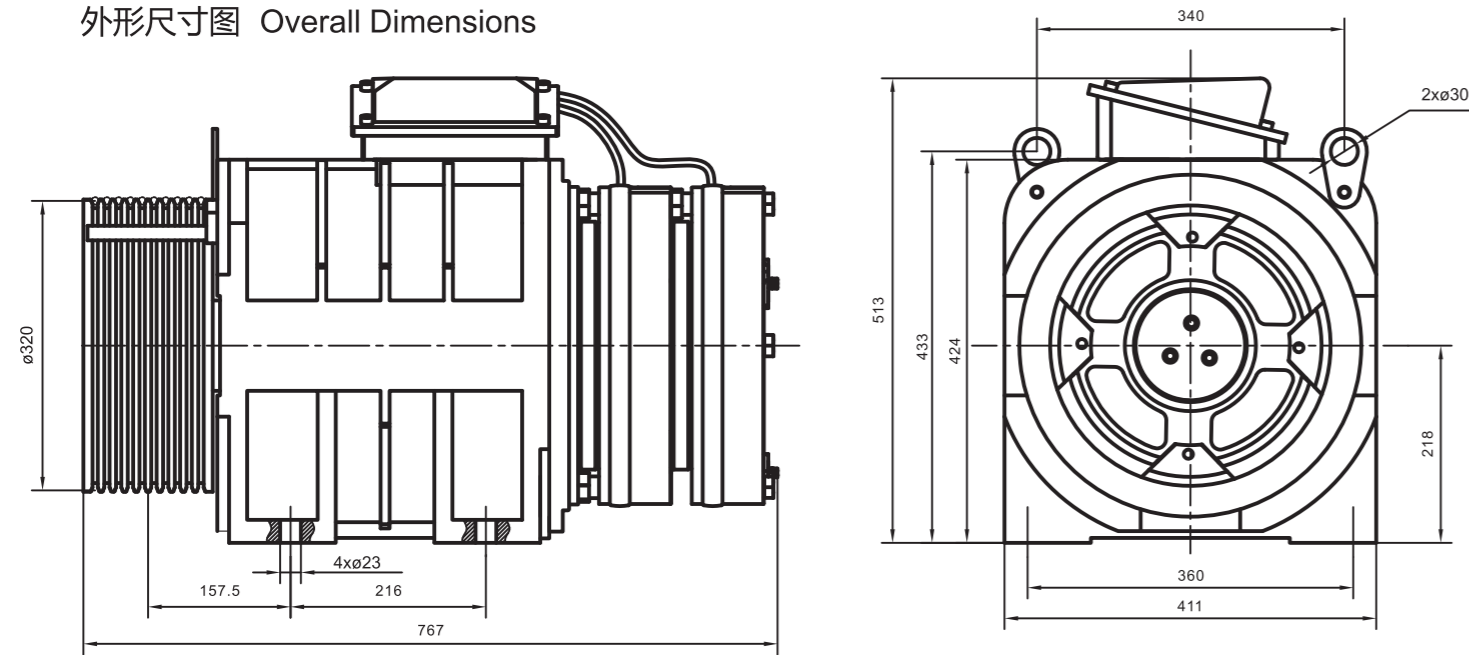


# GETM5.0D-S



许用径向载荷 Max. axle load	5000kg
曳引机概算重量 Motor weight	435kg
启动次数(次/小时) Start-up time	180
绝缘等级 Ins. class	155(F)
制动器型号及数量 Brake type	2只ZZD1-1100

外形尺寸图 Overall Dimensions

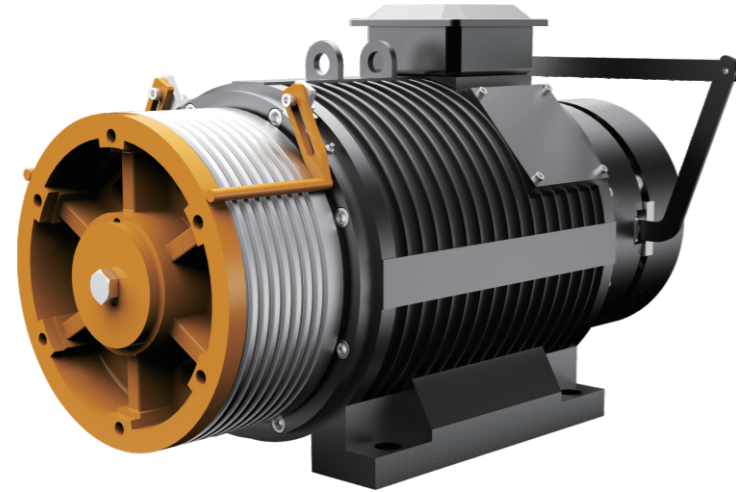


## 规格表 Specification table

型号 Product type	曳引比 Traction Ratio	额定 载重 Load (kg)	额定 速度 Elevator Speed (m/s)	额定 转速 Rated Speed (r/min)	额定 转矩 Rated torque (N.m)	电机 Motor					曳引轮 Sheave			制动器 Brake	
						功率 Power (kW)	电压 Voltage (V)	电流 Current (A)	级数 Poles (p)	频率 Frequency (Hz)	节径 Diameter (mm)	绳槽数 Rope Groove pitch (mm)	槽距 Rope pitch (mm)	电流 Current (A)	电压 Voltage (V)
GETM5.0D-S-100/1275	2:1	1275	1.0	119	682	8.4	340	21	12	23.8	320	≤8×φ8	12	≤2×1.6	DC110V
GETM5.0D-S-150/1275		1275	1.5	179	682	12.5		30		35.8					
GETM5.0D-S-160/1275		1275	1.6	191	682	13.4		34		38.2					
GETM5.0D-S-175/1275		1275	1.75	209	682	14.6		34		41.8					
GETM5.0D-S-200/1275		1275	2.0	239	682	16.7		39		47.8					
GETM5.0D-S-250/1275		1275	2.5	298	682	20.9		49		59.6					
GETM5.0D-S-100/1350	2:1	1350	1.0	119	721	9.0	340	22	12	23.8	320	≤8×φ8	12	≤2×1.6	DC110V
GETM5.0D-S-150/1350		1350	1.5	179	721	13.5		32		35.8					
GETM5.0D-S-160/1350		1350	1.6	191	721	14.5		37		38.2					
GETM5.0D-S-175/1350		1350	1.75	209	721	15.8		37		41.8					
GETM5.0D-S-200/1350		1350	2.0	239	721	18.0		42		47.8					
GETM5.0D-S-250/1350		1350	2.5	298	721	22.5		52		59.6					
GETM5.0D-S-100/1600	2:1	1600	1.0	119	836	10.5	340	26	12	23.8	320	≤8×φ8	12	≤2×1.6	DC110V
GETM5.0D-S-150/1600		1600	1.5	179	836	15.8		36		35.8					
GETM5.0D-S-160/1600		1600	1.6	191	836	16.7		43		38.2					
GETM5.0D-S-175/1600		1600	1.75	209	836	18.3		43		41.8					
GETM5.0D-S-200/1600	2:1	1600	2.0	239	836	20.8	340	49	12	47.8	320	≤10×φ8	12	≤2×1.6	DC110V
GETM5.0D-S-250/1600		1600	2.5	298	836	26.0		60		59.6					

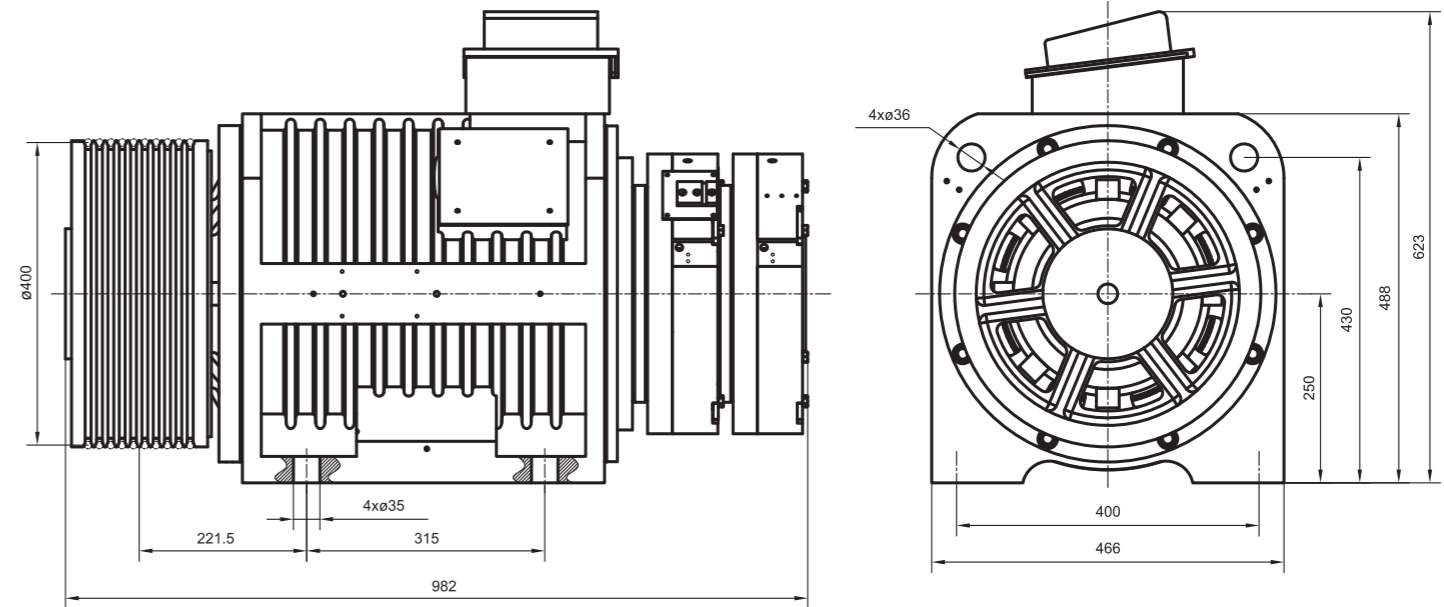
注：1、以上信息仅供参考，具体参数请以 ODF 表为准； 2、绳槽数量、β角、γ角可根据客户系统进行非标；  
 Note: 1. Above parameters for information only, final parameters shall be as per ODF. 2. Quantity of rope groove number, β angle and γ angle can be tailor-made according to customer's requests.

# GETM6.3D



许用径向载荷 Max. axle load	6300kg
曳引机概算重量 Motor weight	740kg
启动次数(次/小时) Start-up time	180
绝缘等级 Ins. class	155(F)
制动器型号及数量 Brake type	2只ZZD1-2000

## 外形尺寸图 Overall Dimensions



规格表 Specification table

型号 Product type	曳引比 Traction Ratio	额定 载重 Load (kg)	额定 速度 Elevator Speed (m/s)	额定 转速 Rated Speed (r/min)	额定 转矩 Rated torque (N.m)	电机 Motor					曳引轮 Sheave			制动器 Brake	
						功率 Power (kW)	电压 Voltage (V)	电流 Current (A)	级数 Poles (p)	频率 Frequency (Hz)	节径 Diameter (mm)	绳槽数 Rope (n)	槽距 Groove pitch (mm)	电流 Current (A)	电压 Voltage (V)
GETM6.3D-100/2000	2:1	2000	1	95	1487	13.4	340	28	20	15.8	400	≤10×φ10	15	≤2X2.9	激励DC200 维持DC100
GETM6.3D-150/2000			1.5	143	1487	20.0		41		23.8					
GETM6.3D-175/2000			1.75	167	1487	23.4		47		27.8					
GETM6.3D-200/2000			2	191	1487	26.8		63		31.8					
GETM6.3D-250/2000			2.5	239	1487	33.5		76		39.8					
GETM6.3D-100/2500	2:1	2500	1	95	1671	16.7	340	37	20	15.8	400	≤10×φ10	15	≤2X2.9	激励DC200 维持DC100
GETM6.3D-150/2500			1.5	143	1671	25.1		54		23.8					
GETM6.3D-175/2500			1.75	167	1671	29.0		62		27.8					
GETM6.3D-200/2500			2	191	1671	33.4		76		31.8					
GETM6.3D-250/2500			2.5	239	1671	41.8		92		39.8					

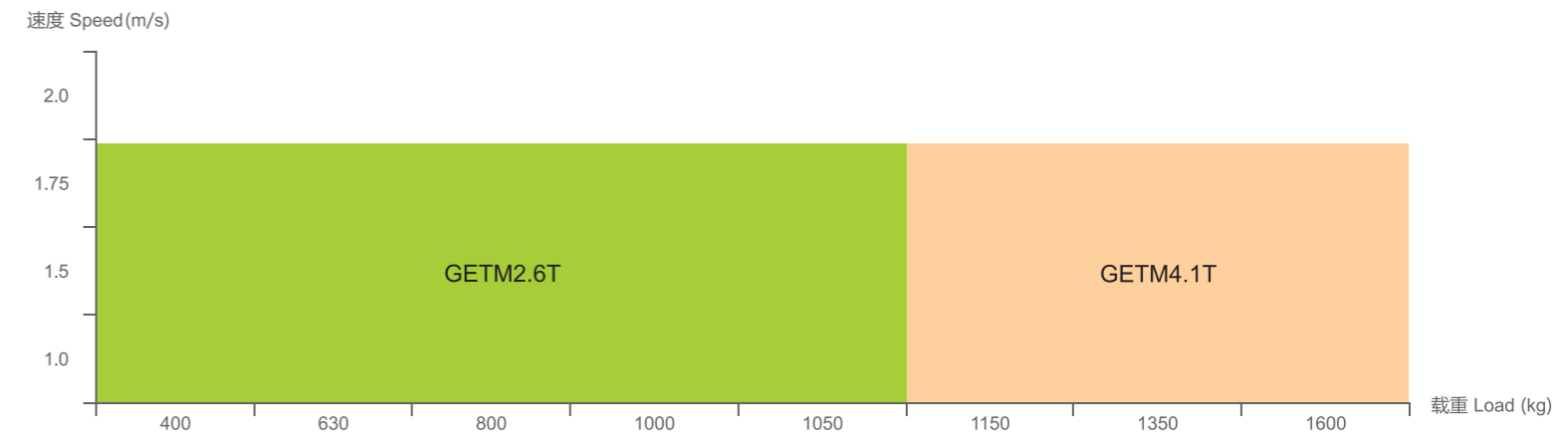
注：1、以上信息仅供参考，具体参数请以 ODF 表为准； 2、绳槽数量、β角、γ角可根据客户系统进行非标；  
 Note: 1. Above parameters for information only, final parameters shall be as per ODF. 2. Quantity of rope groove number, β angle and γ angle can be tailor-made according to customer's requests.



# 钢带主机系列 Belt Machine

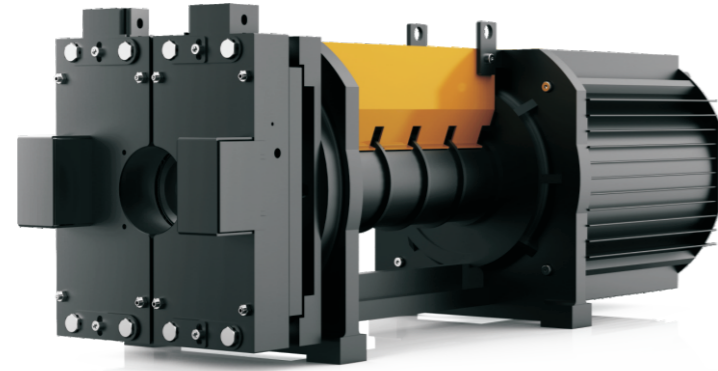
Professional components supplier

## 产品系列 Products Series



注：详细规格咨询公司人员

# GETM2.6T



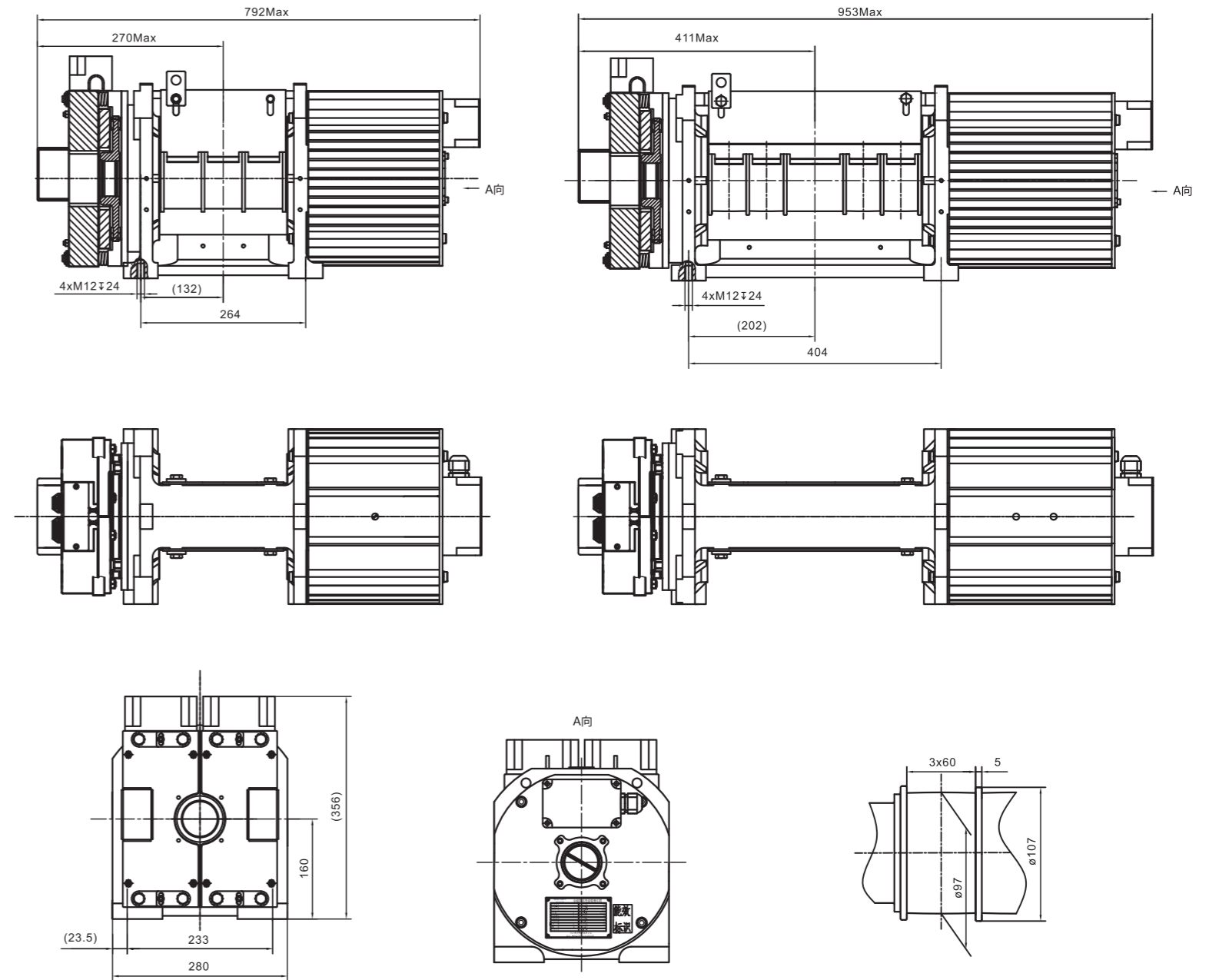
许用径向载荷 Max. axle load	2600kg
曳引机概算重量 Motor weight	170kg
启动次数(次/小时) Start-up time	180
绝缘等级 Ins. class	155(F)
制动器型号及数量 Brake type	1对ZSD1-300

规格表 Specification table

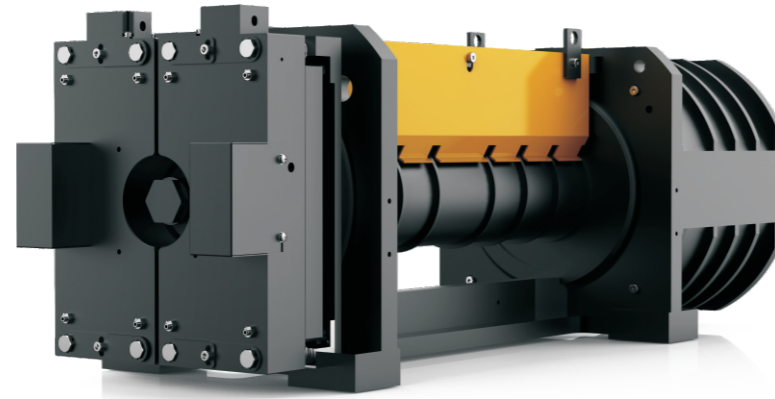
型号 Product type	曳引比 Traction Ratio	额定 载重 Load (kg)	电梯 额定速度 Elevator Speed (m/s)	额定 转速 Rated speed (r/min)	额定 转矩 Rated torque (N.m)	电机 Motor					曳引轮 Sheave			制动器 Brake	
						功率 Power (kW)	电压 Voltage (V)	电流 Current (A)	级数 Poles (p)	频率 Frequency (Hz)	节径 Diameter (mm)	绳槽数 Ropened	槽距 Groove pitch (mm)	电流 Current (A)	电压 Voltage (V)
GETM2.6T-100/0400	2:1	450	1	382	75	3.0	340	7	8	25.5	100	≤3	65	≤2x1.7	DC110
GETM2.6T-100/0630	2:1	630	1	382	105	4.2	340	10	8	25.5	100	≤3	65	≤2x1.7	DC110
GETM2.6T-100/0800	2:1	800	1	382	134	5.3	340	12	8	25.5	100	≤5	65	≤2x1.7	DC110
GETM2.6T-150/0800			1.5	573	134	8.0		18		38.2					
GETM2.6T-175/0800			1.75	668	134	9.4		19		44.5					
GETM2.6T-100/1000	2:1	1000	1	382	167	6.7	340	14	8	25.5	100	≤5	65	≤2x1.7	DC110
GETM2.6T-150/1000			1.5	573	167	10.0		23		38.2					
GETM2.6T-175/1000			1.75	668	167	11.7		24		44.5					
GETM2.6T-100/1050	2:1	1050	1	382	175	7.0	340	15	8	25.5	100	≤5	65	≤2x1.7	DC110
GETM2.6T-150/1050			1.5	573	175	10.5		24		38.2					
GETM2.6T-175/1050			1.75	668	175	12.3		25		44.5					

注：1、以上信息仅供参考，具体参数请以 ODF 表为准； 2、曳引轮轴可根据客户系统进行非标；  
 Note: 1. Above parameters for information only, final parameters shall be as per ODF. 2. The sheave axle can be tailor-according to customer's requirement.

# 外形尺寸图 Overall Dimensions



# GETM4.1T



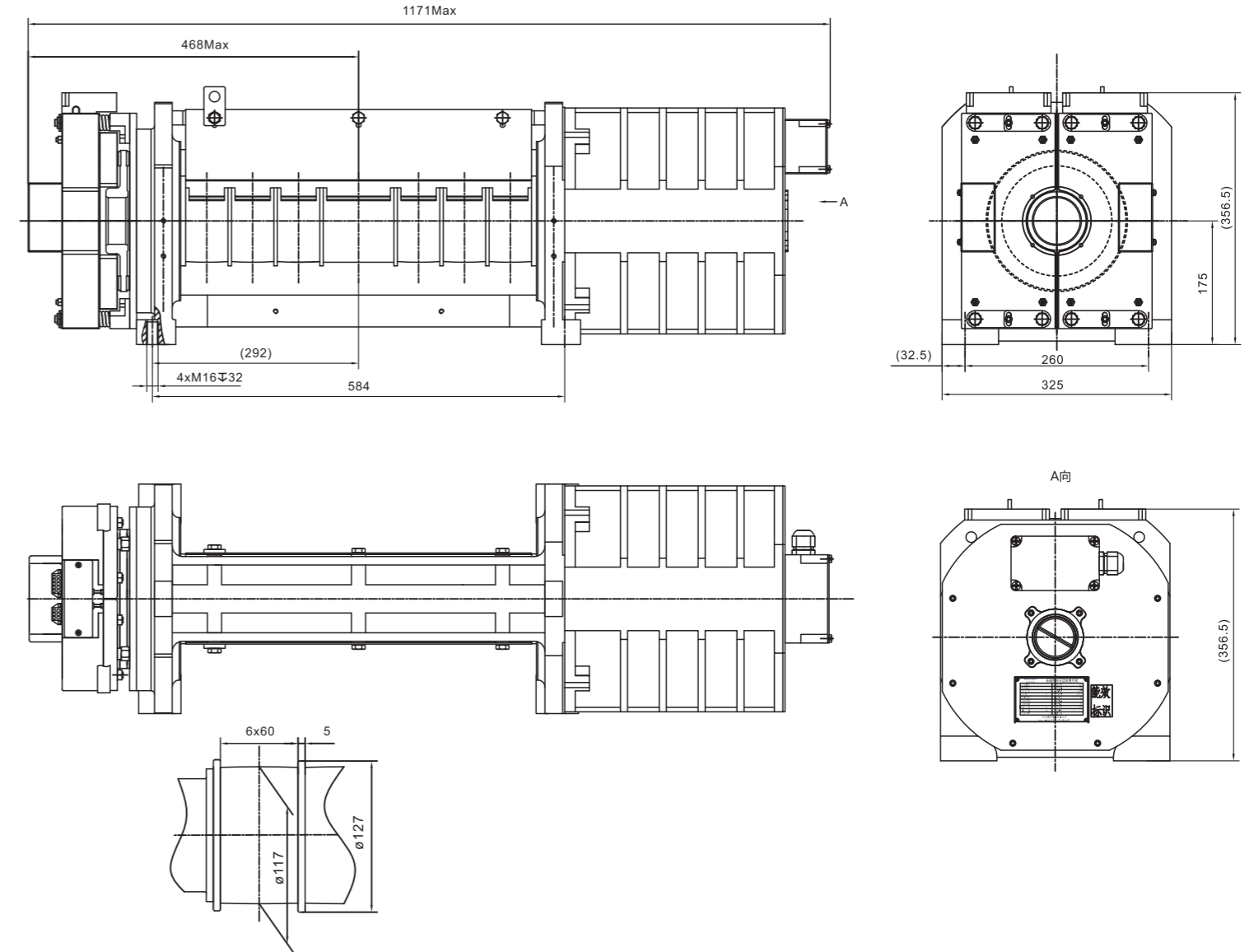
许用径向载荷 Max. axle load	4100kg
曳引机概算重量 Motor weight	300kg
启动次数(次/小时) Start-up time	180
绝缘等级 Ins. class	155(F)
制动器型号及数量 Brake type	1对ZSD1-450

规格表 Specification table

型号 Product type	曳引比 Traction Ratio	额定 载重 Load (kg)	电梯 额定速度 Elevator Speed (m/s)	额定 转速 Rated speed (r/min)	额定 转矩 Rated torque (N.m)	电机 Motor					曳引轮 Sheave			制动器 Brake	
						功率 Power (kW)	电压 Voltage (V)	电流 Current (A)	级数 Poles (p)	频率 Frequency (Hz)	节径 Diameter (mm)	绳槽数 Ropenxd	槽距 Groove pitch (mm)	电流 Current (A)	电压 Voltage (V)
GETM4.1T-100/1150	2:1	1150	1.0	318	231	7.7	340	18	10	26.5	120	≤7	65	≤2x1.8	DC 110
1.5			477	11.5		26		39.8							
1.75			557	13.5		31		46.4							
GETM4.1T-100/1350	2:1	1350	1.0	318	271	9.0	340	21	10	26.5	120	≤7	65	≤2x1.8	DC 110
1.5			477	13.5		31		39.8							
1.75			557	15.8		36		46.4							
GETM4.1T-100/1600	2:1	1600	1.0	318	320	10.7	340	25	10	26.5	120	≤7	65	≤2x1.8	DC 110
1.5			477	16.0		37		39.8							
1.75			557	18.7		38		46.4							

注：1、以上信息仅供参考，具体参数请以 ODF 表为准； 2、曳引轮轴可根据客户系统进行非标；  
 Note: 1. Above parameters for information only, final parameters shall be as per ODF. 2. The sheave axle can be tailor-according to customer's requirement.

## 外形尺寸图 Overall Dimensions







## 家用梯 / 小载重主机系列 For Home Lifts & Small Lifts

该系列主机运用先进的电磁方案设计和结构设计，使主机精致小巧，结构紧凑，性能更为优异，有效节省建筑空间。产品运行时噪音低，为用户创造静谧舒适的环境，广泛应用于家用梯、别墅梯等。

Advanced electromagnetic design and structural design is applied to this series of machine. Its mini-size, compact structure and even-better performance can effectively reduce construction size. Its quietness creates comfortable riding experience. This series of machine is widely used for home lift, villa lift and small MRL passenger elevator.

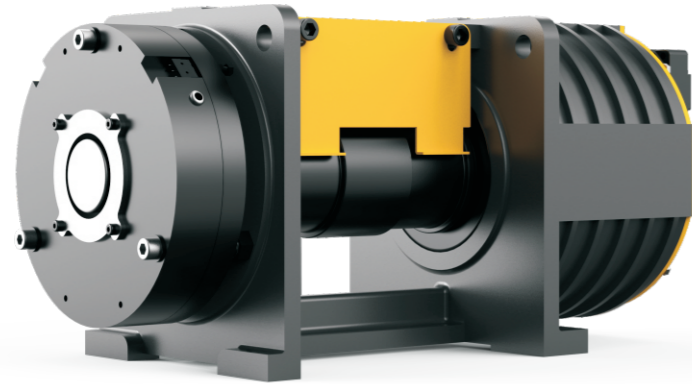


采用自主研发的高性能磁钢材料，并设置过热安全保护装置，延长电机使用寿命  
In-house made high-performance NdFeB magnet brings longer life for the motor.



噪音低，保持精巧的同时不失优异的性能  
Low noise level, good balance between reduced size and excellent performance.

# GETM1.5T



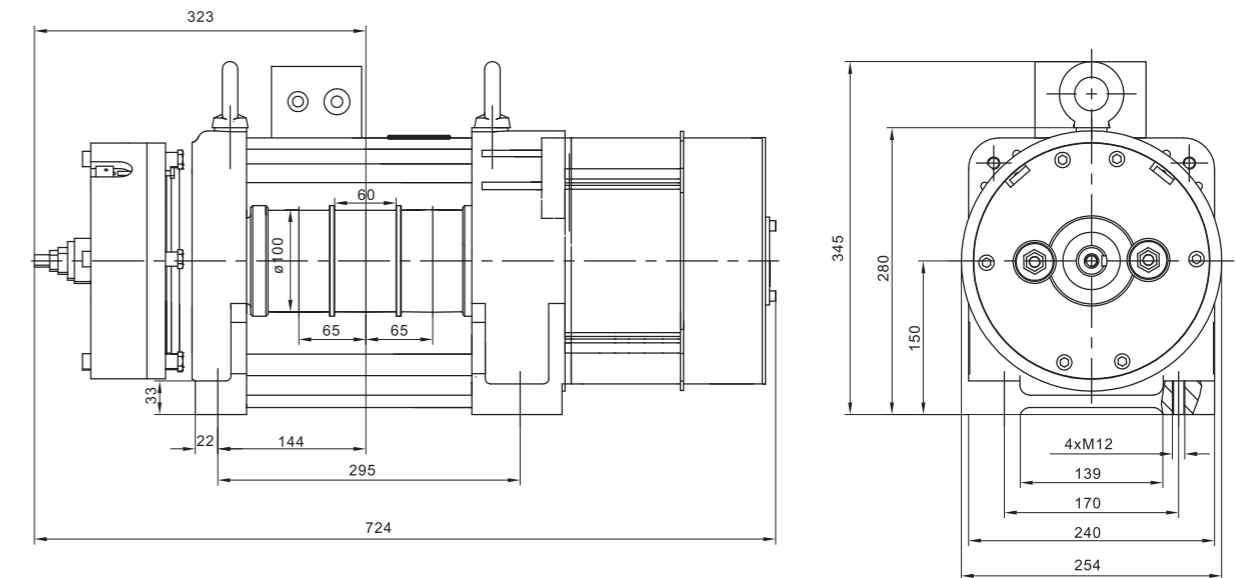
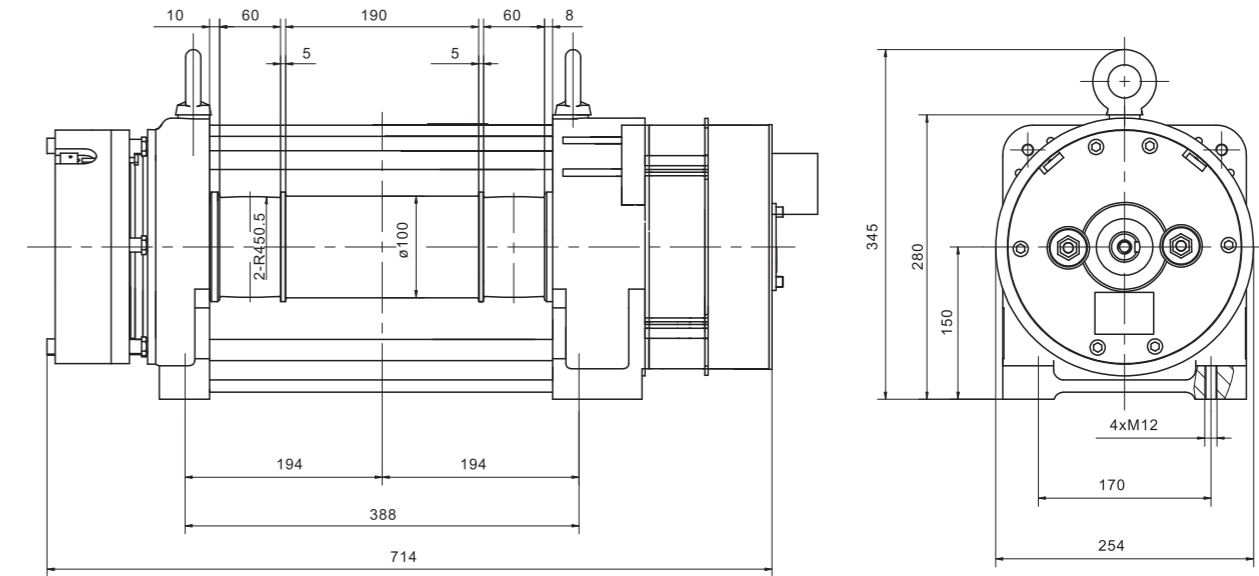
许用径向载荷 Max. axle load	1500kg
曳引机概算重量 Motor weight	100kg
启动次数(次/小时) Start-up time	180
绝缘等级 Ins. class	155(F)
制动器型号及数量 Brake type	1只ZZD2-135

规格表 Specification table

型号 Product type	曳引比 Traction Ratio	额定 载重 Load (kg)	电梯 额定速度 Elevator Speed (m/s)	额定转速 Rated speed (r/min)	额定转矩 Rated torque (N.m)	电机 Motor					曳引轮 Sheave			制动器 Brake	
						功率 Power (kW)	电压 Voltage (V)	电流 Current (A)	级数 Poles (p)	频率 Frequency (Hz)	节径 Diameter (mm)	绳槽数 Rope rxd	槽距 Groove pitche (mm)	电流 Current (A)	电压 Voltage (V)
GETM1.5T-040/0400	2:1	400	0.4	148	68	1.0	220	5	16	19.7	100	2	65	≤1	DC110
GETM1.5T-100/0400			1	371	68	2.6		12							
GETM1.5T-040/0450	2:1	450	0.4	148	75	1.2	220	6	16	19.7	100	2	65	≤1	DC110
GETM1.5T-100/0450			1	371	75	2.9		13							
GETM1.5T-040/0400	2:1	400	0.4	148	68	1.0	340	3	16	19.7	100	2	65	≤1	DC110
GETM1.5T-100/0400			1	371	68	2.6		8							
GETM1.5T-040/0450	2:1	450	0.4	148	75	1.2	340	4	16	19.7	100	2	65	≤1	DC110
GETM1.5T-100/0450			1	371	75	2.9		9							

注：1、以上信息仅供参考，具体参数请以 ODF 表为准； 2、绳槽数量、β角、γ角可根据客户系统进行非标；  
 Note: 1. Above parameters for information only, final parameters shall be as per ODF. 2. Quantity of rope groove number, β angle and γ angle can be tailor-made according to customer's requests.

# 外形尺寸图 Overall Dimensions



# GETM1.9D



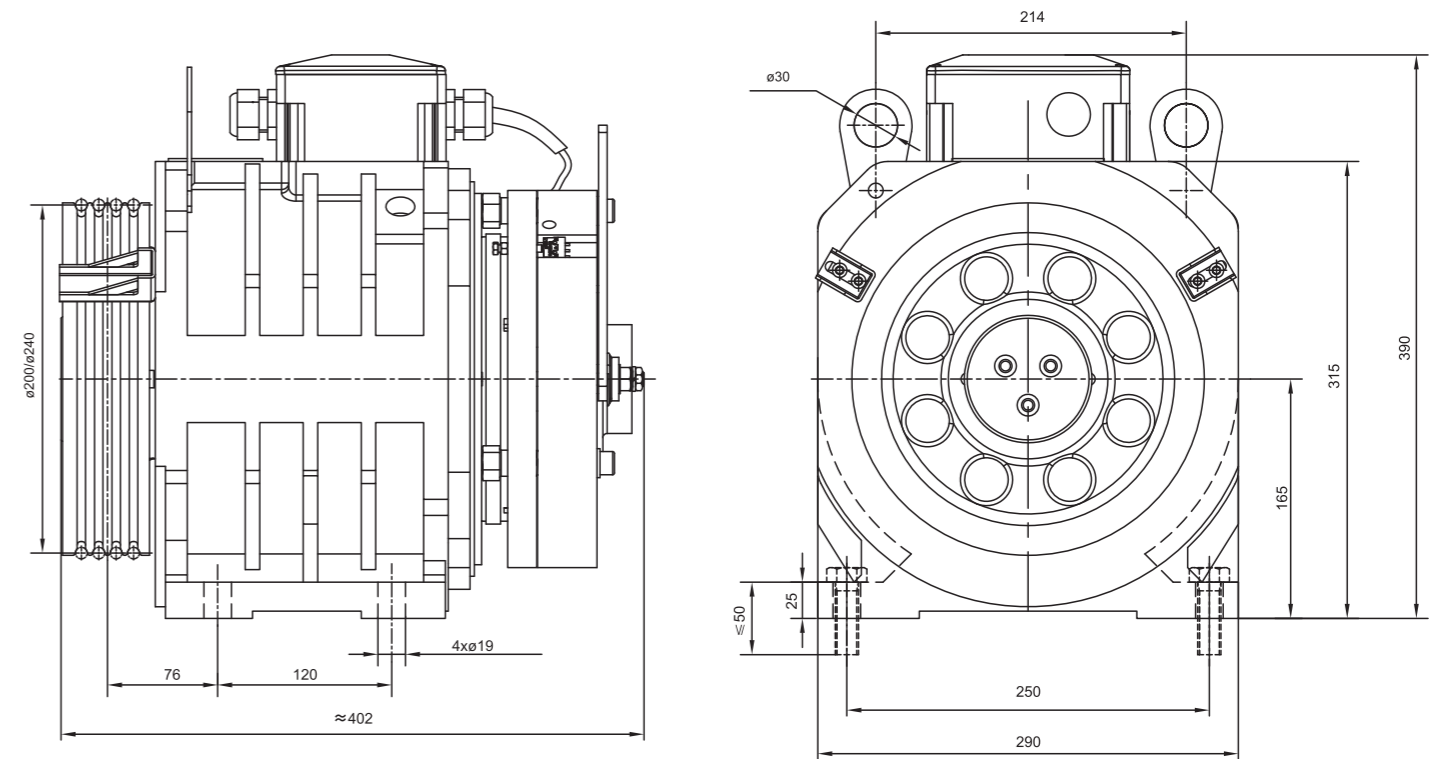
午用径向载荷 Max. axle load	1900kg
曳引机概算重量 Motor weight	126kg
启动次数(次/小时) Start-up time	180
绝缘等级 Ins. class	155(F)
制动器型号及数量 Brake type	1只ZZD2-210

## 规格表 Specification table

型号 Product type	曳引比 Traction Ratio	额定载重 Load (kg)	额定速度 Elevator Speed (m/s)	额定转速 Rated Speed (r/min)	额定转矩 Rated torque (N.m)	电机 Motor					曳引轮 Sheave			制动器 Brake	
						功率 Power (kW)	电压 Voltage (V)	电流 Current (A)	级数 Poles (p)	频率 Frequency (Hz)	节径 Diameter (mm)	绳槽数 Rope (n)	槽距 Groove pitch (mm)	电流 Current (A)	电压 Voltage (V)
GETM1.9D-040/0400	2:1	400	0.4	77	134	1.1	220	7	32	20.4	200	≤4×φ8	12	≤1.7	DC110
GETM1.9D-040/0400	2:1	400	0.4	64	160	1.1	220	9	32	17.1	240	≤4×φ8	12	≤1.7	DC110

注：1、以上信息仅供参考，具体参数请以 ODF 表为准； 2、绳槽数量、β角、γ角可根据客户系统进行非标；  
 Note: 1. Above parameters for information only, final parameters shall be as per ODF. 2. Quantity of rope groove number, β angle and γ angle can be tailor-made according to customer's requests.

## 外形尺寸图 Overall Dimensions

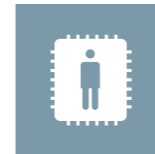




## 高速主机系列 For High-Speed Elevators

此系列主机拥有超高载重量和 10m/s 的最大额定速度，可广泛适用于高速、大载重电梯的高层建筑，单绕和复绕的结构均适用。该系列主机运用内转子双支撑结构，先进技术保证了产品运行的高效平稳。产品采用进口制动器，自制高性能磁钢和国际知名配件，其温升和噪音都远远低于行业标准。

This series of traction machine is applicable for elevators with large rated load and Max. rated speed at 10m/s which is installed in ultra high-rise buildings. Both single wrap and double wrap is available. Advanced technologies such as internal rotor & dual supporting structure is adopted to ensure high efficiency and smooth operation. The adoption of imported brakes, in-house made high-performance magnets and other famous-brand parts guarantees its temperature rising and noise level much lower than the level required by relevant standards.



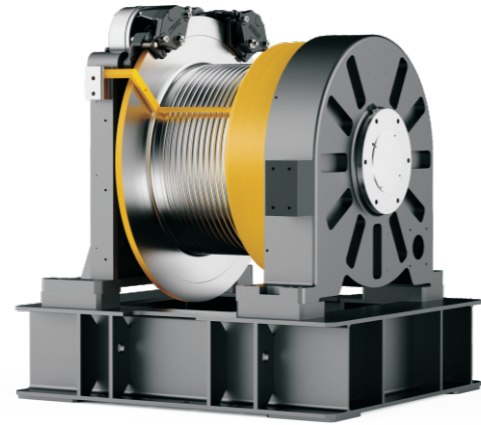
钳式制动器，动作灵敏，运行快速平稳，特殊的工艺保证制动可靠、制动力矩稳定  
Imported brake, swift and sensitive in response, smooth in operation, reliable braking guaranteed by unique fabrication techniques, stable braking torque.



超高载重量和高速运行，更适合高端用户的需求  
Ultra large rated load and high rated speed, ideal choice for high-end customers.

# GETM12C(复绕 Double Wrapping)

许用径向载荷 Max. axle load	12000kg
曳引机概算重量 Motor weight	1460kg
启动次数(次/小时) Start-up time	240
绝缘等级 Ins. class	155(F)
制动器型号及数量 Brake type	2只EC-5415SM

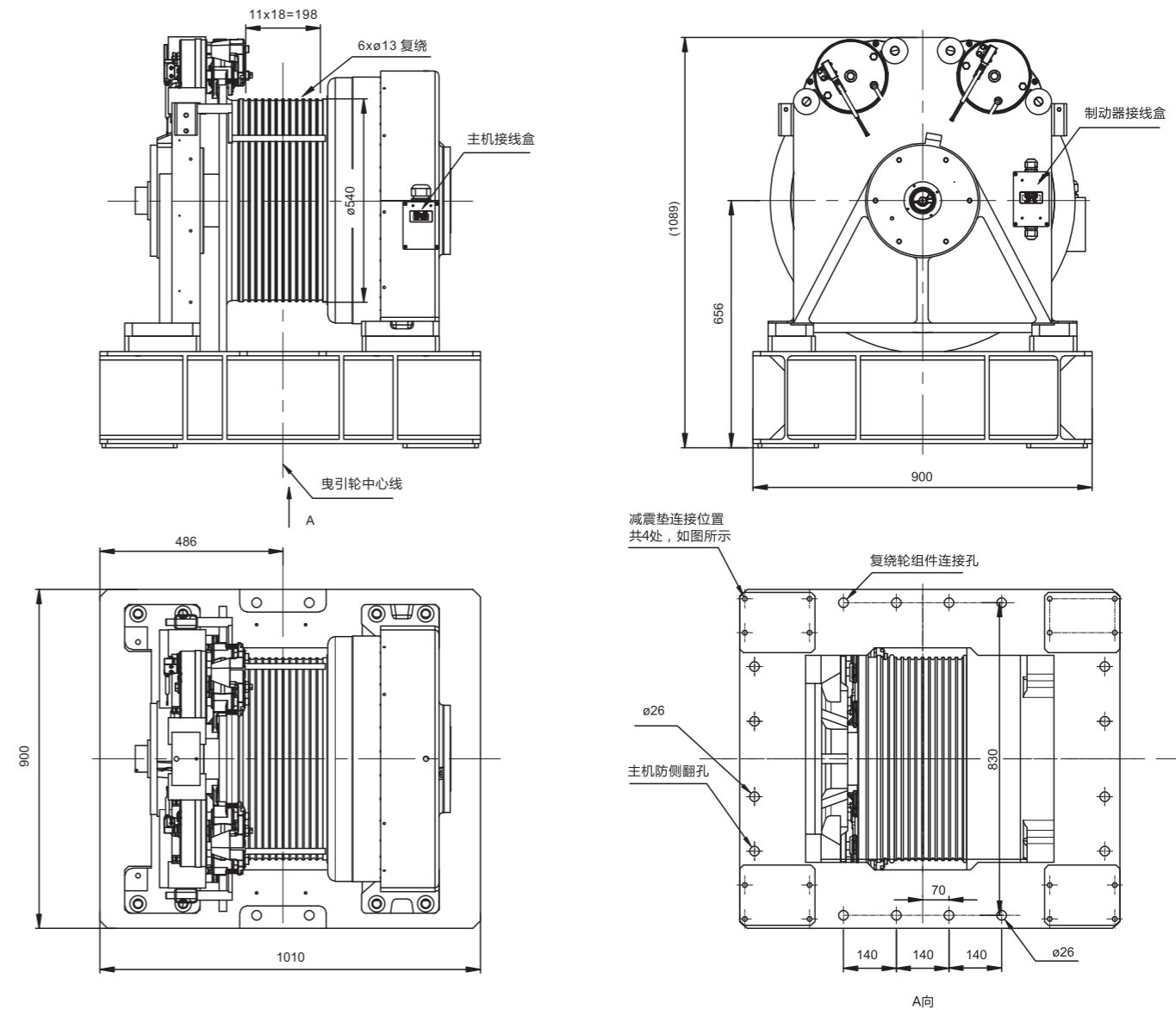


规格表 Specification table

型号 Product type	曳引比 Traction Ratio	额定 载重 Load (kg)	电梯 额定速度 Elevator Speed (m/s)	额定 转速 Rated speed (r/min)	额定 转矩 Rated torque (N.m)	电机 Motor					曳引轮 Sheave			制动器 Brake		
						功率 Power (kW)	电压 Voltage (V)	电流 Current (A)	级数 Poles (p)	频率 Frequency (Hz)	节径 Diameter (mm)	绳槽数 Rope (n)	槽距 Groove pitch (mm)	电流 Current (A)	电压 Voltage (V)	
GETM12C-300/1150	2:1(复绕)	1150	3	212	1037	23.0	340	52	32	56.5	540	≤12×φ13	半圆槽	18	≤2×3A	DC110
GETM12C-350/1150			3.5	248	1037	27.0		61		66.1						
GETM12C-400/1150			4	283	1037	31.0		72		75.5						
GETM12C-300/1350	2:1(复绕)	1350	3	212	1218	27.0	340	61	32	56.5	540	≤12×φ13	半圆槽	18	≤2×3A	DC110
GETM12C-350/1350			3.5	248	1218	32.0		70		66.1						
GETM12C-400/1350			4	283	1218	36.0		78		75.5						
GETM12C-300/1600	2:1(复绕)	1600	3	212	1443	32.0	340	73	32	56.5	540	≤12×φ13	半圆槽	18	≤2×3A	DC110
GETM12C-350/1600			3.5	248	1443	37.0		84		66.1						
GETM12C-400/1600			4	283	1443	43.0		95		75.5						
GETM12C-300/1150	2:1(复绕)	1150	3	212	1037	23.0	513	34	32	56.5	540	≤12×φ13	半圆槽	18	≤2×3A	DC110
GETM12C-350/1150			3.5	248	1037	27.0		40		66.1						
GETM12C-400/1150			4	283	1037	31.0		46		75.5						
GETM12C-300/1350	2:1(复绕)	1350	3	212	1218	27.0	513	41	32	56.5	540	≤12×φ13	半圆槽	18	≤2×3A	DC110
GETM12C-350/1350			3.5	248	1218	32.0		44		66.1						
GETM12C-400/1350			4	283	1218	36.0		51		75.5						
GETM12C-300/1600	2:1(复绕)	1600	3	212	1443	32.0	513	43	32	56.5	540	≤12×φ13	半圆槽	18	≤2×3A	DC110
GETM12C-350/1600			3.5	248	1443	37.0		53		66.1						
GETM12C-400/1600			4	283	1443	43.0		61		75.5						

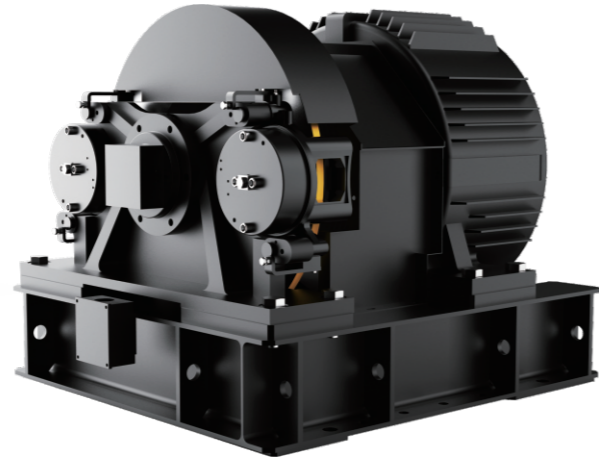
注：1. 以上信息仅供参考，具体参数请以 ODF 表为准； 2. 绳槽数量、β角、γ角可根据客户系统进行非标；  
 Note: 1. Above parameters for information only, final parameters shall be as per ODF. 2. Quantity of rope groove number, angle and γ angle can be tailor-made according to customer's requests.

# 外形尺寸图 Overall Dimensions



# GETM15C(单 / 复绕 Single / Double Wrapping)

许用径向载荷 Max. axle load	15000kg
曳引机概算重量 Motor weight	2100kg
启动次数(次/小时) Start-up time	240
绝缘等级 Ins. class	155(F)
制动器型号及数量 Brake type	2只EC-4023EF

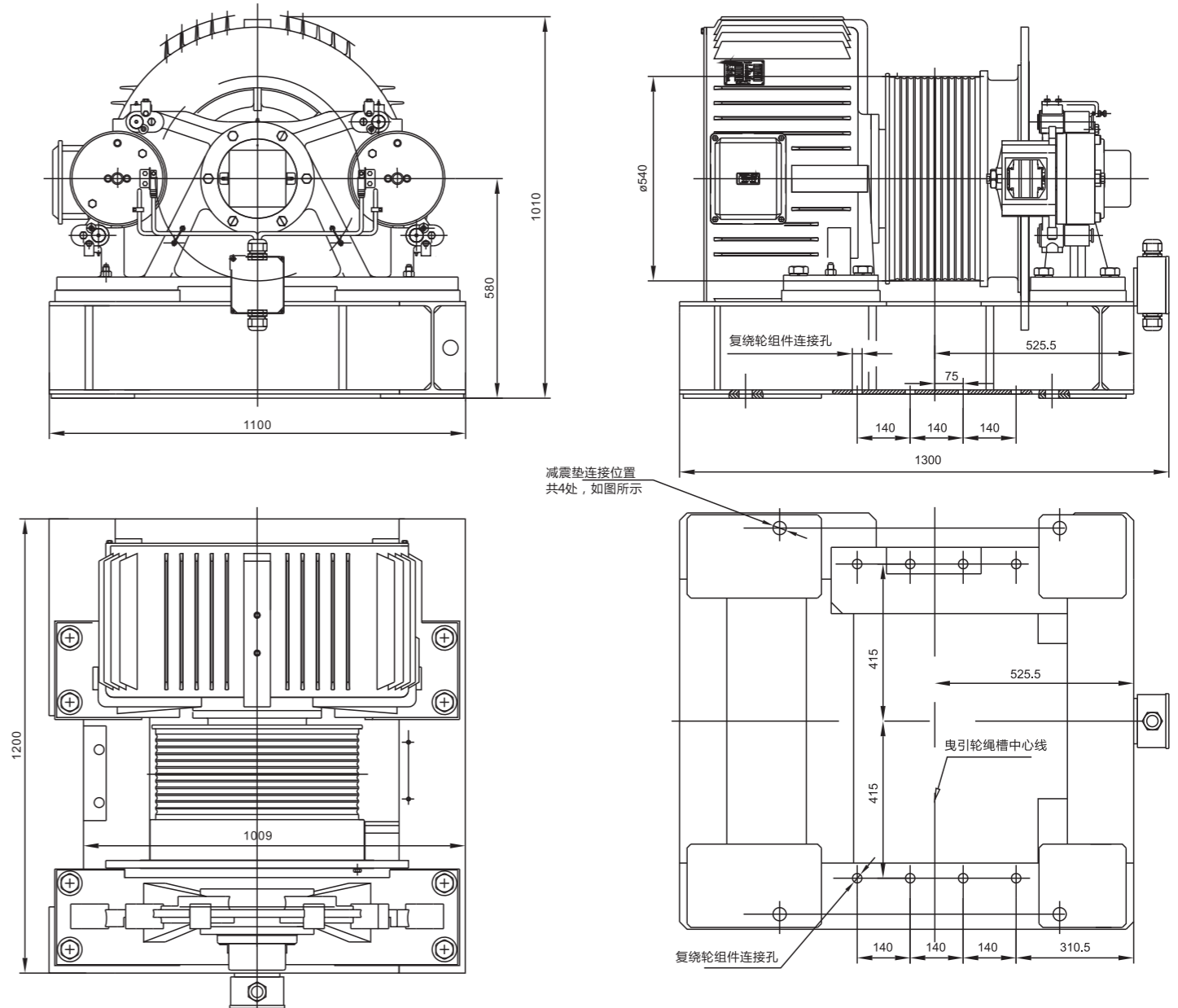


规格表 Specification table

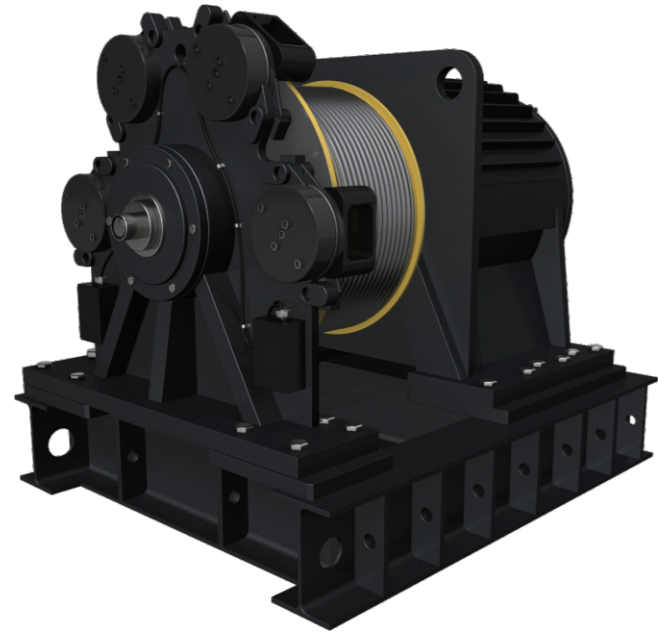
型号 Product type	曳引比 Traction Ratio	额定 载重 Load (kg)	电梯 额定速度 Elevator Speed (m/s)	额定 转速 Rated speed (r/min)	额定 转矩 Rated torque (N.m)	电机 Motor					曳引轮 Sheave			制动器 Brake		
						功率 Power (kW)	电压 Voltage (V)	电流 Current (A)	级数 Poles (p)	频率 Frequency (Hz)	节径 Diameter (mm)	绳槽数 Rope (n)	槽距 Groove pitch (mm)	电流 Current (A)	电压 Voltage (V)	
GETM15C-300/1350	2:1(复绕)	1350	3	212	1218	27.0	340	58	24	42.4	540	≤12×φ13	半圆槽	18	≤2x2	Dc125
GETM15C-350/1350			3.5	248	1218	32.0		72		49.6						
GETM15C-400/1350			4	283	1218	36.0		80		56.6						
GETM15C-300/1600	2:1(复绕)	1600	3	212	1444	32.0	340	68	24	42.4	540	≤12×φ13	半圆槽	18	≤2x2	Dc125
GETM15C-350/1600			3.5	248	1444	38.0		83		49.6						
GETM15C-400/1600			4	283	1444	43.0		92		56.6						
GETM15C-300/2000	2:1(复绕)	2000	3	212	1805	40.0	340	84	24	42.4	540	≤12×φ13	半圆槽	18	≤2x2	Dc125
GETM15C-350/2000			3.5	248	1805	47.0		98		49.6						
GETM15C-400/2000			4	283	1805	54.0		113		56.6						
GETM15C-300/1350	2:1(复绕)	1350	3	212	1218	27.0	513	41	24	42.4	540	≤12×φ13	半圆槽	18	≤2x2	Dc125
GETM15C-350/1350			3.5	248	1218	32.0		46		49.6						
GETM15C-400/1350			4	283	1218	36.0		55		56.6						
GETM15C-300/1600	2:1(复绕)	1600	3	212	1444	32.0	513	47	24	42.4	540	≤12×φ13	半圆槽	18	≤2x2	Dc125
GETM15C-350/1600			3.5	248	1444	38.0		54		49.6						
GETM15C-400/1600			4	283	1444	43.0		62		56.6						
GETM15C-175/2000	2:1(复绕)	2000	1.75	124	1805	23.0	513	34	24	24.8	540	≤12×φ13	半圆槽	18	≤2x2	Dc125
GETM15C-250/2000			2.5	177	1805	33.0		48		35.4						
GETM15C-300/2000			3	212	1805	40.0		57		42.4						
GETM15C-350/2000			3.5	248	1805	47.0		66		49.6						
GETM15C-400/2000			4	283	1805	54.0		77		56.6						

注：1、以上信息仅供参考，具体参数请以 ODF 表为准； 2、绳槽数量、β角、γ角可根据客户系统进行非标；  
 Note: 1. Above parameters for information only, final parameters shall be as per ODF. 2. Quantity of rope groove number, β angle and γ angle can be tailor-made according to customer's requests.

# 外形尺寸图 Overall Dimensions



# GETM40C (复绕 Double Wrapping)



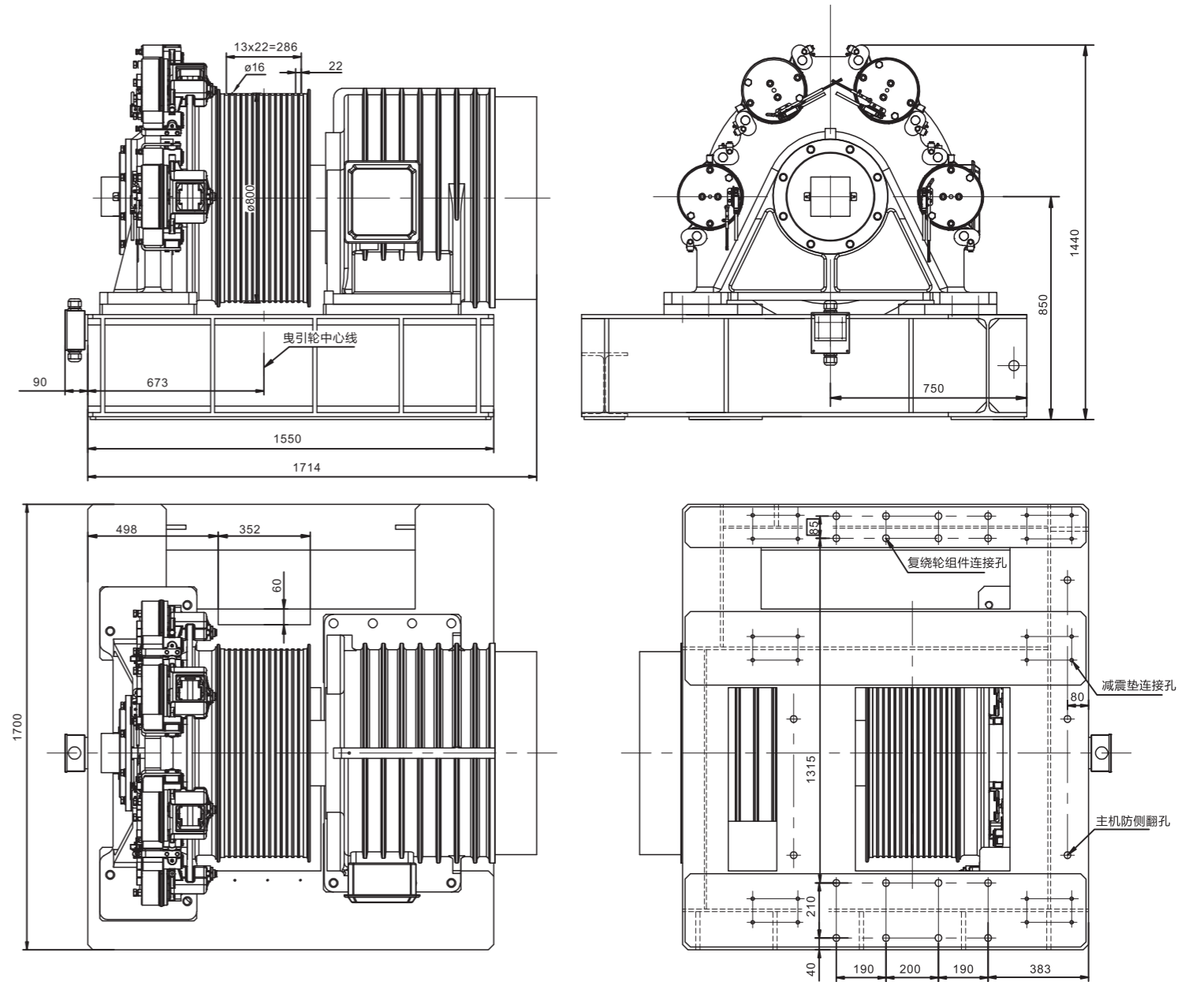
许用径向载荷 Max. axle load	40000kg
曳引机概算重量 Motor weight	4700kg
启动次数(次/小时) Start-up time	240
绝缘等级 Ins. class	155(F)
制动器型号及数量 Brake type	4只EC-4023EF

规格表 Specification table

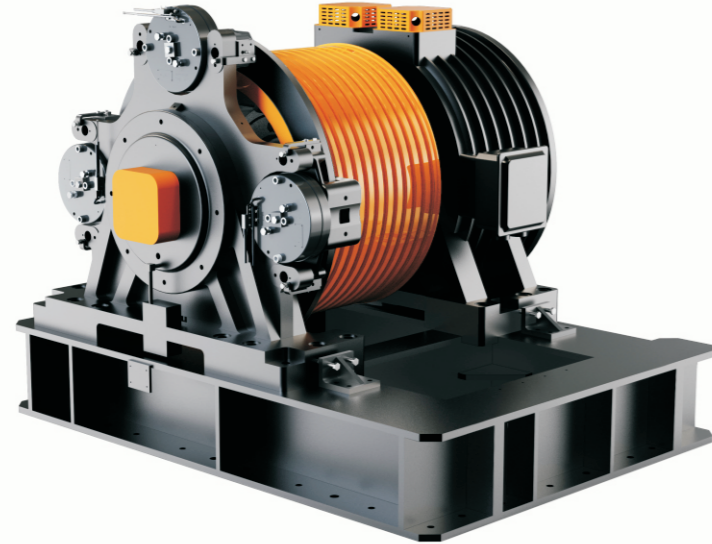
型号 Product type	曳引比 Traction Ratio	额定 载重 Load (kg)	电梯 额定速度 Elevator Speed (m/s)	额定 转速 Rated speed (r/min)	额定 转矩 Rated torque (N.m)	电机 Motor					曳引轮 Sheave			制动器 Brake		
						功率 Power (kW)	电压 Voltage (V)	电流 Current (A)	级数 Poles (p)	频率 Frequency (Hz)	节径 Diameter (mm)	绳槽数 Rope (n)	槽距 Groove pitch (mm)	电流 Current (A)	电压 Voltage (V)	
GETM40C-500/1600	1:1(复绕)	1600	5	119	4275	54.0	340	117	24	23.8	800	≤7×φ16	半圆槽	22	≤4x2	DC125
GETM40C-600/1600			6	143	4275	64.0		137		28.6						
GETM40C-700/1600			7	167	4275	72.0		160		33.4						
GETM40C-800/1600			8	191	4275	86.0		174		38.2						
GETM40C-500/2000	1:1(复绕)	2000	5	119	5342	67.0	340	153	24	23.8	800	≤7×φ16	半圆槽	22	≤4x2	DC125
GETM40C-600/2000			6	143	5342	80.0		174		28.6						
GETM40C-700/2000			7	167	5342	94.0		215		33.4						
GETM40C-800/2000			8	191	5342	107.0		233		38.2						

注：1. 以上信息仅供参考，具体参数请以 ODF 表为准； 2. 绳槽数量、β角、γ角可根据客户系统进行非标；  
 Note: 1. Above parameters for information only, final parameters shall be as per ODF. 2. Quantity of rope groove number, β angle and γ angle can be tailor-made according to customer's requests.

# 外形尺寸图 Overall Dimensions



# GETM70C



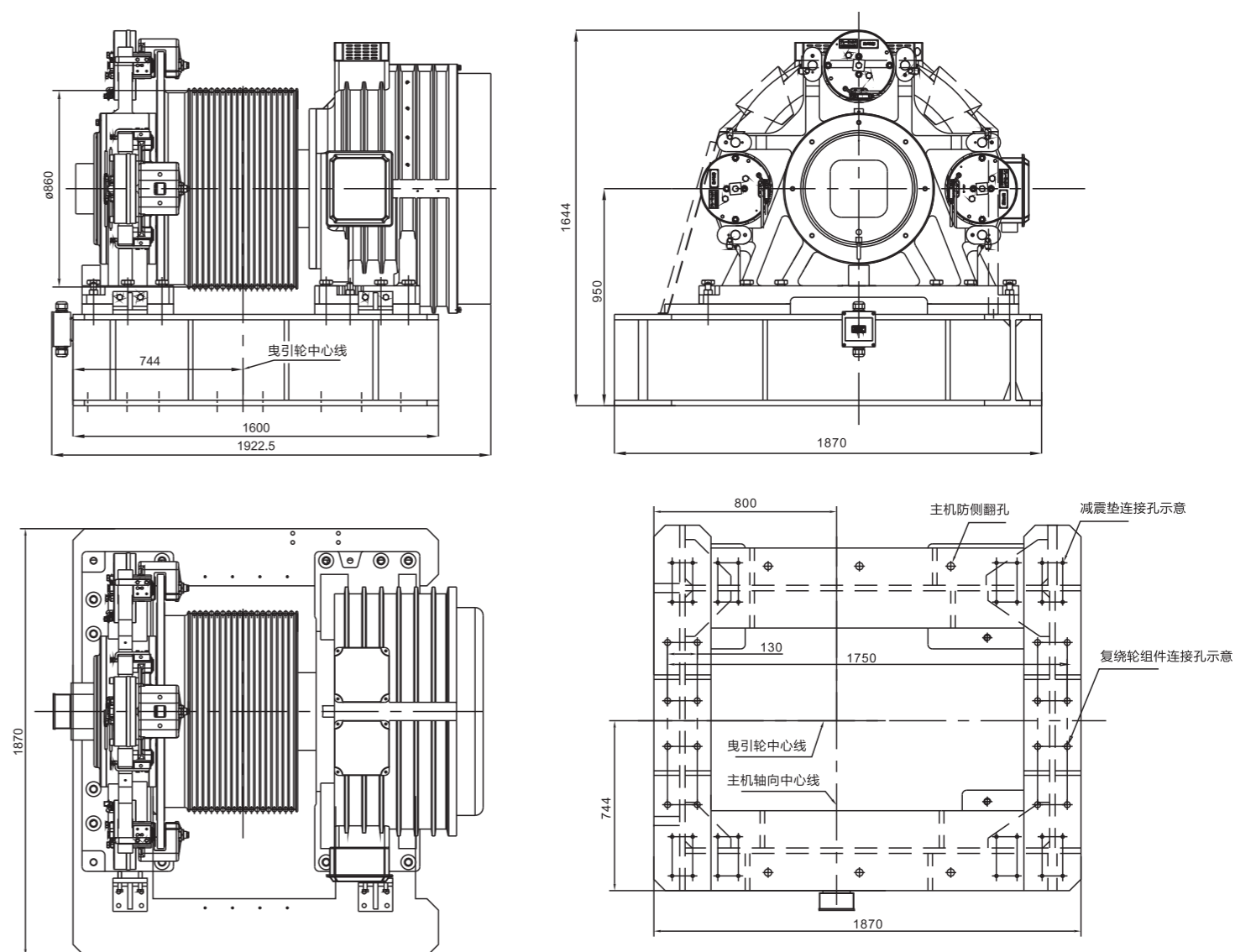
许用径向载荷 Max. axle load	70000kg
曳引机概算重量 Motor weight	6300kg
启动次数(次/小时) Start-up time	240
绝缘等级 Ins. class	155(F)
制动器型号及数量 Brake type	3只EC-4035SM

规格表 Specification table

型号 Product type	曳引比 Traction Ratio	额定 载重 Load (kg)	电梯 额定速度 Elevator Speed (m/s)	额定 转速 Rated speed (r/min)	额定 转矩 Rated torque (N.m)	电机 Motor					曳引轮 Sheave			制动器 Brake		
						功率 Power (kW)	电压 Voltage (V)	电流 Current (A)	级数 Poles (p)	频率 Frequency (Hz)	节径 Diameter (mm)	绳槽数 Rope (n)	槽距 Groove pitch (mm)	电流 Current (A)	电压 Voltage (V)	
GETM70C-0800/2000	1:1(复绕)	2000	8	178	5635	105.0	340	246	20	29.7	860	≤8×φ19	半圆槽	25	≤3X6	DC125
GETM70C-1000/2000	1:1(复绕)	2000	10	222	5635	131.0	340	279	20	37.0	860	≤8×φ19	半圆槽	25	≤3X6	DC125

注：1、以上信息仅供参考，具体参数请以 ODF 表为准； 2、绳槽数量、β角、γ角可根据客户系统进行非标；  
 Note: 1. Above parameters for information only, final parameters shall be as per ODF. 2. Quantity of rope groove number, β angle and γ angle can be tailor-made according to customer's requests.

# 外形尺寸图 Overall Dimensions







## 无齿轮货梯主机系列 Gearless for cargo lifts

无齿轮货梯采用永磁同步电机，相对于有齿轮货梯，体积小，效率高，能耗低，更加环保。

The gearless goods elevator adopts permanent magnet synchronous motor. Compared with the gearless goods elevator, it has small size, high efficiency, low energy consumption and is more environmentally friendly.



在常规 H 系列上做延伸，性能稳定  
Extended on conventional H series, with stable performance

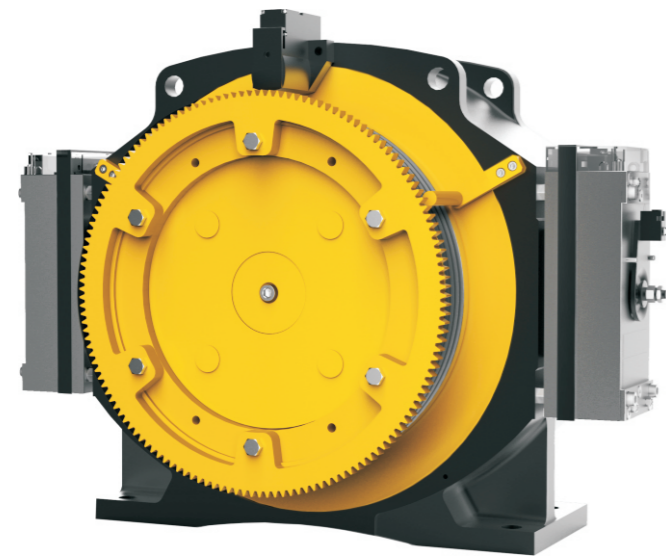


承受货梯进物料的冲击  
Bear the impact of materials entering the cargo elevator



制动力高于标准要求，更适合货梯场景  
The braking force is higher than the standard requirements, which is more suitable for the cargo elevator scenario

# GETM3.0H 无齿轮货梯



许用径向载荷 Max. axle load	3000kg
曳引机概算重量 Motor weight	315kg
启动次数(次/小时) Start-up time	80
绝缘等级 Ins. class	155(F)
制动器型号及数量 Brake type	2只DZD1-500

规格表 Specification table

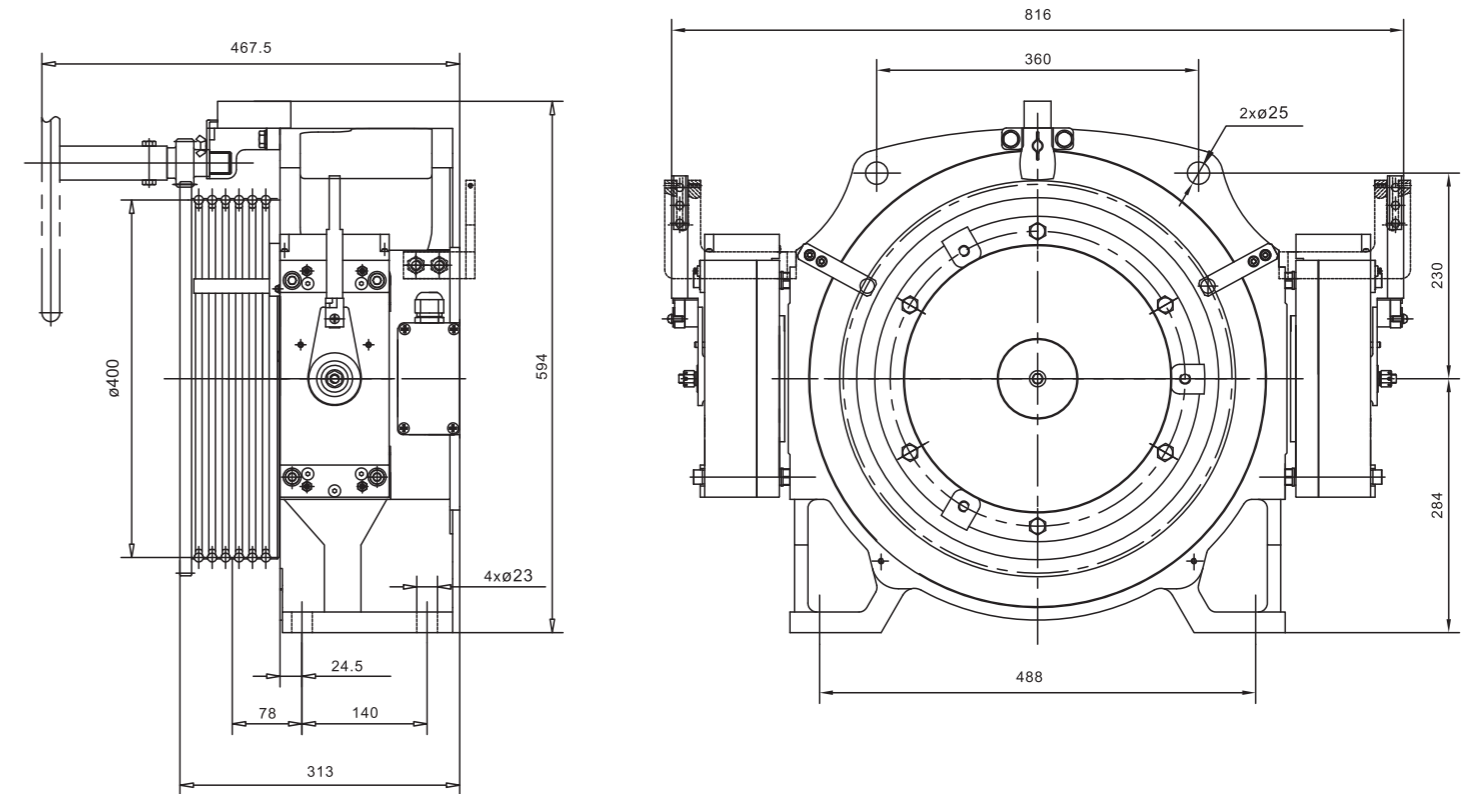
型号 Product type	曳引比 Traction Ratio	额定 载重 Load (kg)	额定 速度 Elevator Speed (m/s)	额定 转速 Rated Speed (r/min)	额定 转矩 Rated torque (N.m)	电机 Motor					曳引轮 Sheave			制动器 Brake	
						功率 Power (kW)	电压 Voltage (V)	电流 Current (A)	级数 Poles (p)	频率 Frequency (Hz)	节径 Diameter (mm)	绳槽数 Rope (n)	槽距 Groove pitch (mm)	电流 Current (A)	电压 Voltage (V)
GETM3.0H-050/2000H	4:1	2000	0.5	96	613	6.1	340	14	32	25.4	400	≤6×φ10	15	≤2x1.5	DC110
GETM3.0H-100/2000H	4:1	2000	1	191	613	12.3	340	28	32	50.9	400	≤6×φ10	15	≤2x1.5	DC110

注：1、要求平衡系数≥0.45，ED=120S/h，补偿系数90%±10% 2、随机配置简易护罩，盘车装置；3、编码器线按配优迈一体化变频器，带软管，线长10米

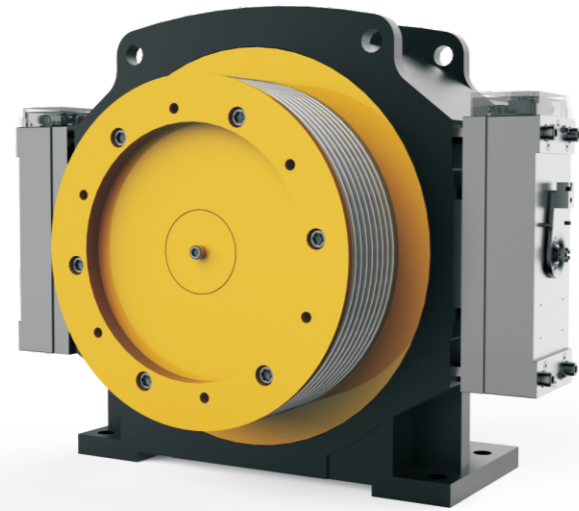
Note: 1. The specification of brake shall be as that from Wulong.

2. Definition of machine position: viewed from the motor end facing the traction machine, it is left-hand type when the sheave is at left side, and right-hand type when the sheave is at right side. Both left-hand type and right-hand type is available.

# 外形尺寸图 Overall Dimensions



# GETM5.0H 无齿轮货梯



许用径向载荷 Max. axle load	5000kg
曳引机概算重量 Motor weight	440kg
启动次数(次/小时) Start-up time	80
绝缘等级 Ins. class	155(F)
制动器型号及数量 Brake type	2只DZD1-653

## 规格表 Specification table

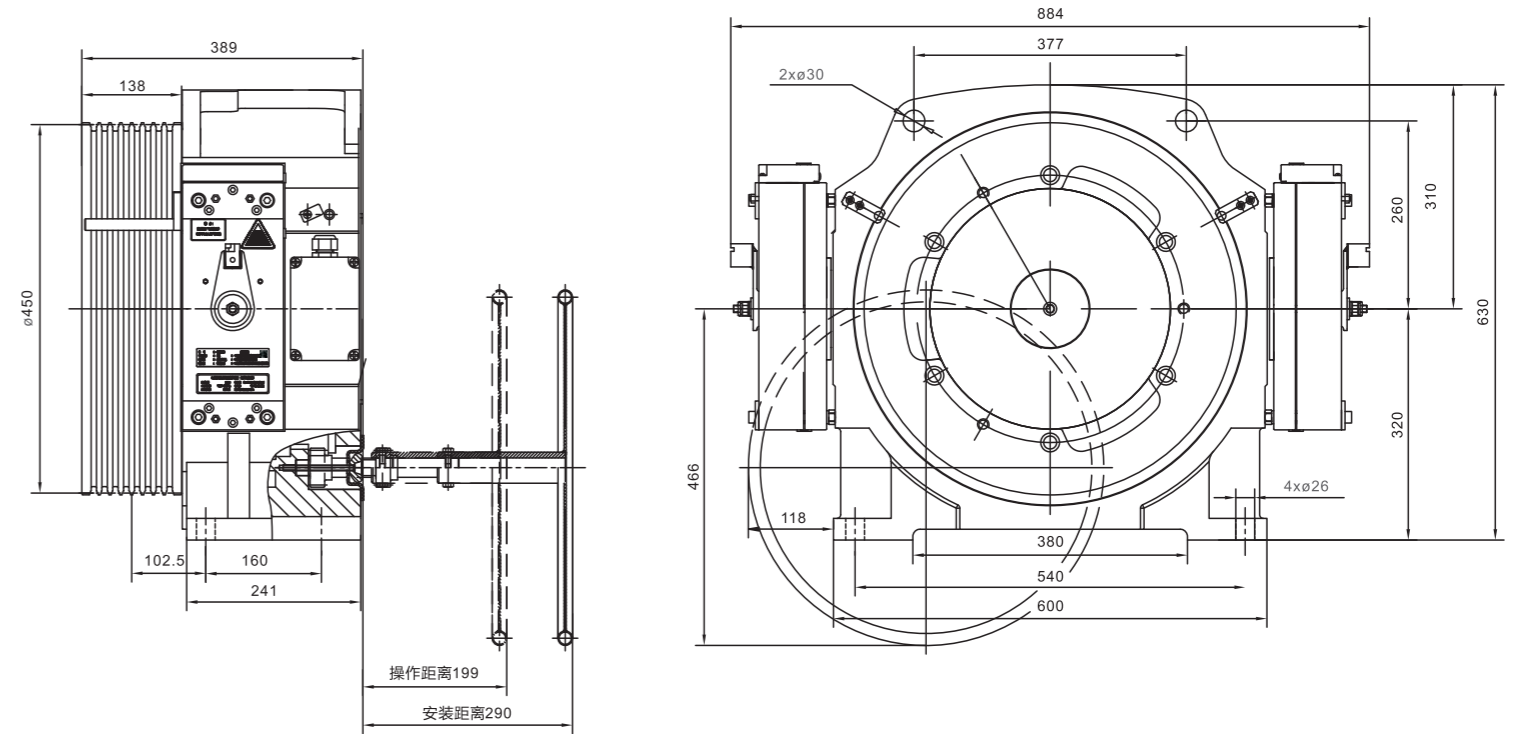
型号 Product type	曳引比 Traction Ratio	额定载重 Load (kg)	额定速度 Elevator Speed (m/s)	额定转速 Rated Speed (r/min)	额定转矩 Rated torque (N.m)	电机 Motor					曳引轮 Sheave			制动器 Brake	
						功率 Power (kW)	电压 Voltage (V)	电流 Current (A)	级数 Poles (p)	频率 Frequency (Hz)	节径 Diameter (mm)	绳槽数 Rope (n)	槽距 Groove pitch (mm)	电流 Current (A)	电压 Voltage (V)
GETM5.0H-050/3000H	4:1	3000	0.5	85	1034	9.2	340	21	32	22.7	450	≤8×φ10	15	≤2x1.2	DC110
GETM5.0H-100/3000H	4:1	3000	1	170	1034	18.4	340	40	32	45.3	450	≤8×φ10	15	≤2x1.2	DC110

注：1、要求平衡系数≥0.45，ED=120S/h，补偿系数90%±10% 2、随机配置简易护罩，盘车装置； 3、编码器线按配优迈一体化变频器，带软管，线长10米

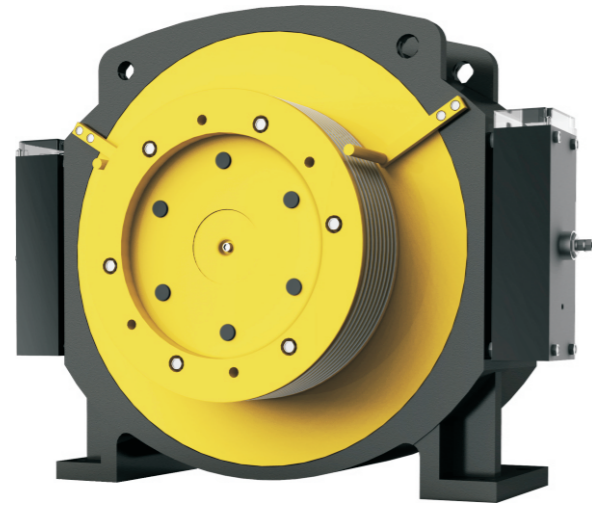
Note: 1. The specification of brake shall be as that from Wulong.

2. Definition of machine position: viewed from the motor end facing the traction machine, it is left-hand type when the sheave is at left side, and right-hand type when the sheave is at right side. Both left-hand type and right-hand type is available.

## 外形尺寸图 Overall Dimensions



# GETM6.0H 无齿轮货梯



许用径向载荷 Max. axle load	6000kg
曳引机概算重量 Motor weight	780kg
启动次数(次/小时) Start-up time	80
绝缘等级 Ins. class	155(F)
制动器型号及数量 Brake type	2只DZD1-653/2只DZD1-18400

规格表 Specification table

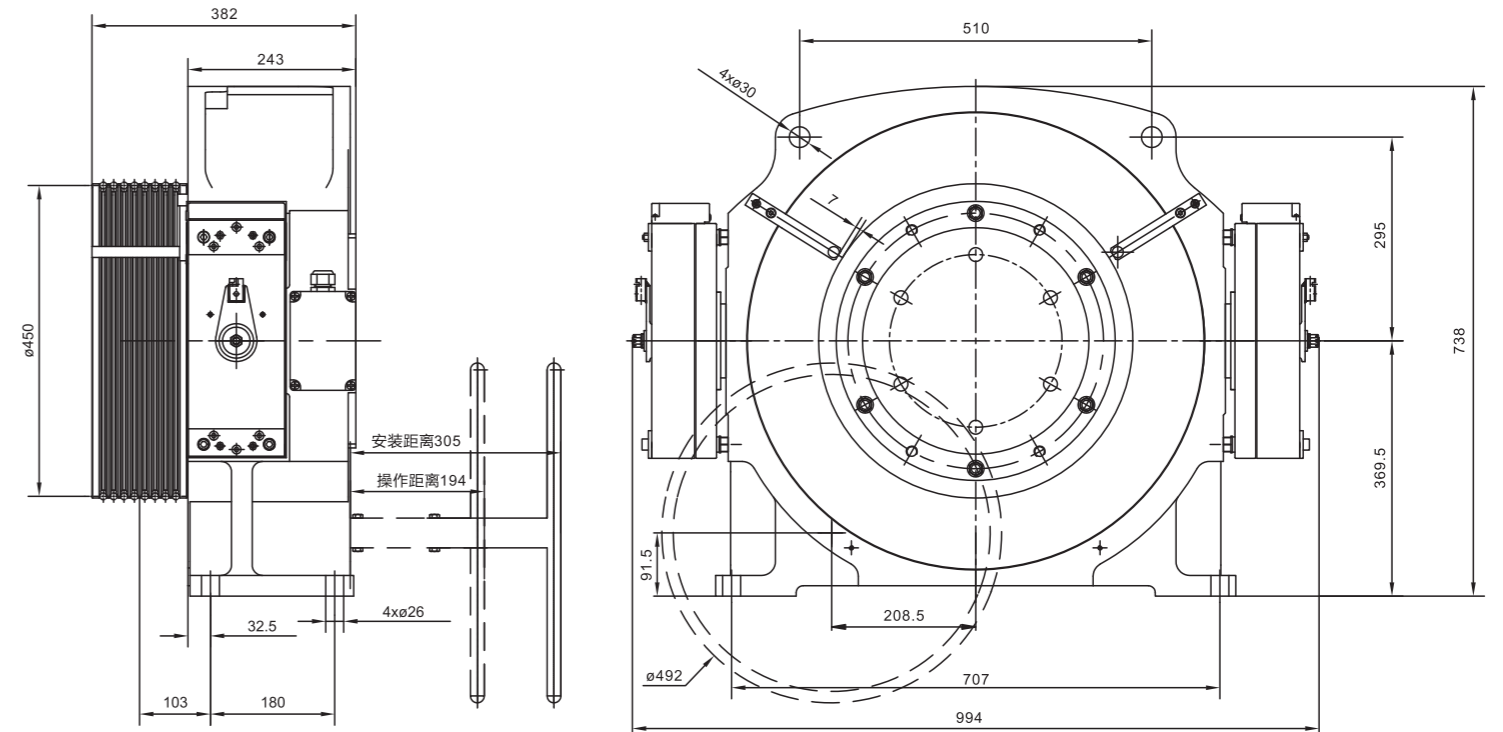
型号 Product type	曳引比 Traction Ratio	额定 载重 Load (kg)	额定 速度 Elevator Speed (m/s)	额定 转速 Rated Speed (r/min)	额定 转矩 Rated torque (N.m)	电机 Motor					曳引轮 Sheave			制动器 Brake		
						功率 Power (kW)	电压 Voltage (V)	电流 Current (A)	极对数 Poles (p)	频率 Frequency (Hz)	节径 Diameter (mm)	绳槽数 Rope (n)	槽距 Groove pitch (mm)	型号 Type	电流 Current (A)	电压 Voltage (V)
GETM6.0H-050/4000H	4:1	4000	0.5	85	1378	12.3	340	33	32	22.7	450	9×φ10	15	DZD1-653	≤2X1.2	DC110
GETM6.0H-100/4000H			1	170	1378	24.5		65		45.3	450	9×φ10	15	DZD1-653	≤2X1.2	
GETM6.0H-050/4000H			0.5	74	1593	12.3		32		19.6	520	7×φ13	20	DZD1-18400	≤2X1.7	
GETM6.0H-100/4000H			1	147	1593	24.5		65		39.2	520	7×φ13	20	DZD1-18400	≤2X1.7	
GETM6.0H-050/5000H	4:1	5000	0.5	74	1991	15.4	340	37	32	19.6	520	7×φ13	20	DZD1-18400	≤2X1.7	DC110
GETM6.0H-100/5000H			1	147	1991	30.8		70		39.2	520	7×φ13	20	DZD1-18400	≤2X1.7	
GETM6.0H-050/5000H			0.5	80	1838	15.4		37		21.3	480	8×φ12	18	DZD1-18400	≤2X1.7	
GETM6.0H-100/5000H			1	159	1838	30.8		70		42.4	480	8×φ12	18	DZD1-18400	≤2X1.7	

注：1、要求平衡系数≥0.45，ED=120St/h，补偿系数90%±10% 2、随机配置简易护罩，盘车装置； 3、编码器线按配优远一体化变频器，带软管，线长10米

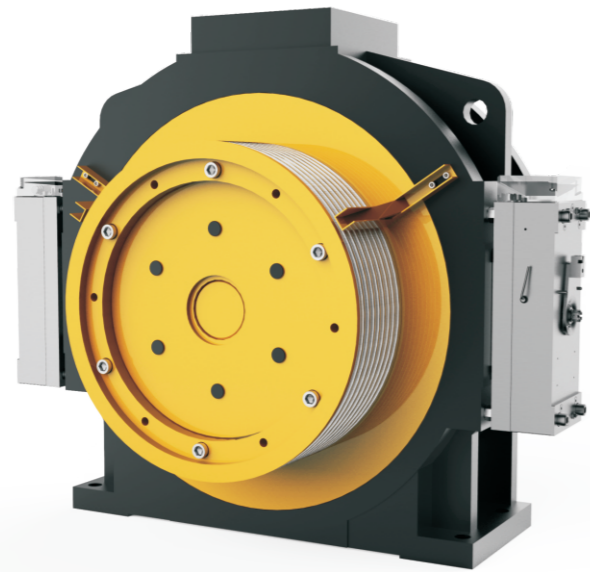
Note: 1. The specification of brake shall be as that from Wulong.

2. Definition of machine position: viewed from the motor end facing the traction machine, it is left-hand type when the sheave is at left side, and right-hand type when the sheave is at right side. Both left-hand type and right-hand type is available.

# 外形尺寸图 Overall Dimensions



# GETM8.0H 无齿轮货梯



许用径向载荷 Max. axle load	8000kg
曳引机概算重量 Motor weight	1010kg
启动次数(次/小时) Start-up time	80
绝缘等级 Ins. class	155(F)
制动器型号及数量 Brake type	2只DZD1-21800

## 规格表 Specification table

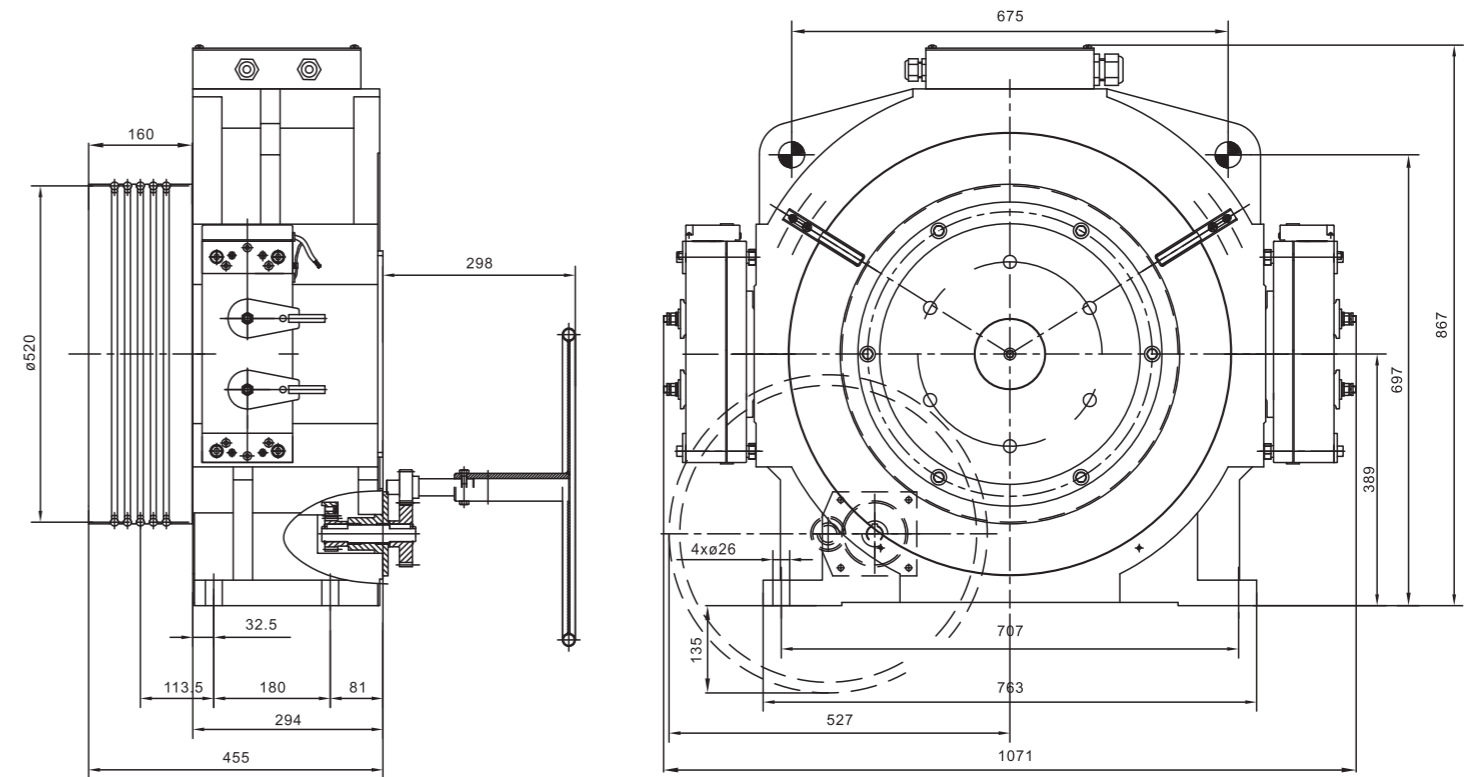
型号 Product type	曳引比 Traction Ratio	额定载重 Load (kg)	额定速度 Elevator Speed (m/s)	额定转速 Rated Speed (r/min)	额定转矩 Rated torque (N.m)	电机 Motor					曳引轮 Sheave			制动器 Brake	
						功率 Power (kW)	电压 Voltage (V)	电流 Current (A)	级数 Poles (p)	频率 Frequency (Hz)	节径 Diameter (mm)	绳槽数 Rope (n)	槽距 Groove pitch (mm)	电流 Current (A)	电压 Voltage (V)
GETM8.0H-100/5000H	4:1	5000	1	147	1946	30.0	340	77	32	39.2	520	≤7×φ13	15	≤2x1.8	DC110

注：1、要求平衡系数≥0.45，ED=120St/h，补偿系数90%±10% 2、随机配置高易护罩，盘车装置；3、编码器线按配优迈一体化变频器，带软管，线长10米

Note: 1. The specification of brake shall be as that from Wulong.

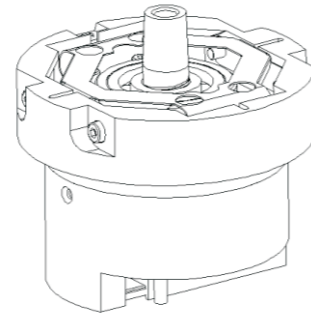
2. Definition of machine position: viewed from the motor end facing the traction machine, it is left-hand type when the sheave is at left side, and right-hand type when the sheave is at right side. Both left-hand type and right-hand type is available.

## 外形尺寸图 Overall Dimensions



# F53正余弦编码器

- 针对电梯同步曳引机研制开发的专用编码器
- 宽工作温度范围：-20°C ~ +100°C，最适宜电梯曳引机的应用
- 抗干扰性能强
- 创新的LED光源自调节功能保证信号稳定可靠，提高产品使用寿命



## 概述

F53 针对电梯曳引机的需求研制开发，满足所有曳引机安装需求。采用集成相位阵专用控制芯片，大大减少器件数量，可靠性高。创新的LED光源自调节功能，保证信号稳定可靠，提高产品使用寿命。

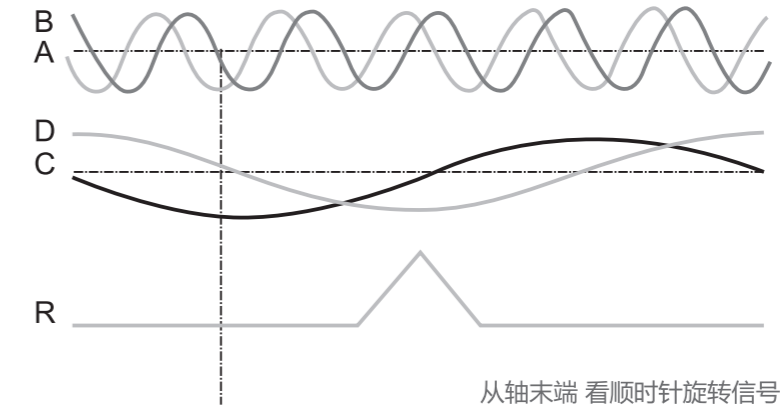
## 技术数据（机械）

外径	53 mm
轴径	10mm锥形实心轴(锥度1:10)
最大轴载	径向90N，轴向20N
允许电机轴跳动	轴向± 0.4mm，径向± 0.1mm
最高转速	1500 RPM
启动转矩	≤ 1Ncm
防护等级	IP 40
工作温度	-20°C ~ + 100°C
储存温度	-40°C ~ + 120°C
外壳材	料铝

## 技术数据（电气）

电源电压	直流5 V ±10%
最大空载电流	150mA
增量信号	A,B 正弦-余弦 1Vpp
脉冲数	2048
最大输出频率	180kHz
参考信号：R	> 0.4 V (1 脉冲/ 转)
磁极信号：C,D	正弦-余弦1 VPP (1 周期/ 转)
连接	带电缆的PCB 连接器

## F53 信号



增量信号A 和B 以及零位信号R 是差分电压信号。差分信号电平是1Vpp。零位信号每旋转一周出现一次，当A、B 信号振幅相同时达到最大值。C 和D 每转发出一个周期的正弦波，可以用来测定在启动磁极时无刷直流电机转子的绝对位置。所有的信号直流偏置为2.5V。

## PCB连接器管脚定义

颜色	管脚号	信号
棕色	1A	C-
灰/粉	1B	UB
黄	2A	A-
黑	2B	D+
绿/棕	3A	NC
蓝	3B	B+
粉	4A	R-
灰	4B	R+
红	5A	B-
白/绿	5B	GND
紫	6A	D-
绿	6B	A+
红/蓝	7A	NC
白	7B	C+